

## Datasheet for ABIN2856686 anti-NDUFA12 antibody (full length)

### 5 Images



[Go to Product page](#)

### Overview

Quantity:	100 µL
Target:	NDUFA12
Binding Specificity:	full length
Reactivity:	Human, Mouse, Rat
Host:	Rabbit
Clonality:	Polyclonal
Conjugate:	This NDUFA12 antibody is un-conjugated
Application:	Western Blotting (WB), Immunofluorescence (IF), Immunohistochemistry (Paraffin-embedded Sections) (IHC (p)), Immunocytochemistry (ICC)

### Product Details

Immunogen:	Full length human NDUFA12 Recombinant protein.
Isotype:	IgG
Cross-Reactivity:	Chimpanzee
Cross-Reactivity (Details):	Chimpanzee (100 %)
Characteristics:	Rabbit Polyclonal antibody to NDUFA12 (NADH dehydrogenase (ubiquinone) 1 alpha subcomplex, 12) NDUFA12 antibody [N1C3]
Purification:	Purified by antigen-affinity chromatography.

## Target Details

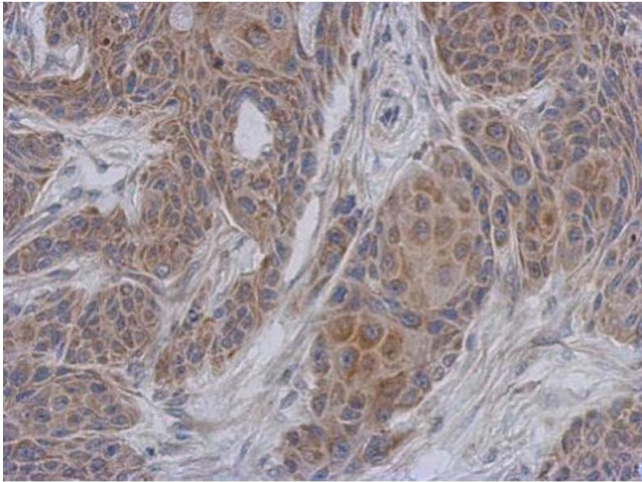
Target:	NDUFA12
Alternative Name:	NDUFA12 ( <a href="#">NDUFA12 Products</a> )
Background:	<p>Accessory subunit of the mitochondrial membrane respiratory chain NADH dehydrogenase (Complex I), that is believed not to be involved in catalysis. Complex I functions in the transfer of electrons from NADH to the respiratory chain. The immediate electron acceptor for the enzyme is believed to be ubiquinone.</p> <p>Cellular Localization: Mitochondrion inner membrane, Peripheral membrane protein, Matrix side</p>
Molecular Weight:	17 kDa
Gene ID:	55967

## Application Details

Application Notes:	<p>Suggested dilution Reference ICC/IF 1:100-1:1000* IHC (Formalin-fixed paraffin-embedded sections) 1:100-1:1000* Western blot 1:500-1:3000* Not tested in other applications. *Optimal dilutions/concentrations should be determined by the researcher.Suggested dilutionReferenceICC/IF1:100-1:1000* IHC (Formalin-fixed paraffin-embedded sections)1:100-1:1000* Western blot1:500-1:3000*</p>
Comment:	Positive Control: HepG2 , Raji , mouse liver
Restrictions:	For Research Use only

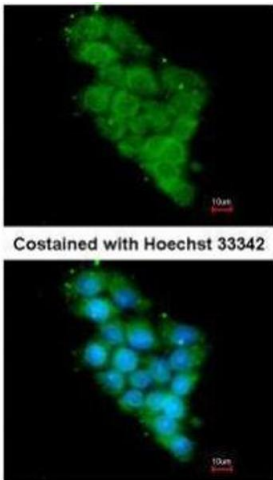
## Handling

Format:	Liquid
Concentration:	0.89 mg/mL
Buffer:	0.1M Tris, 0.1M Glycine, 10 % Glycerol ( pH 7). 0.01 % Thimerosal was added as a preservative.
Preservative:	Thimerosal (Merthiolate)
Precaution of Use:	This product contains Thimerosal (Merthiolate): a POISONOUS AND HAZARDOUS SUBSTANCE which should be handled by trained staff only.
Storage:	-20 °C
Storage Comment:	Keep as concentrated solution. Aliquot and store at -20°C or below. Avoid multiple freeze-thaw cycles.



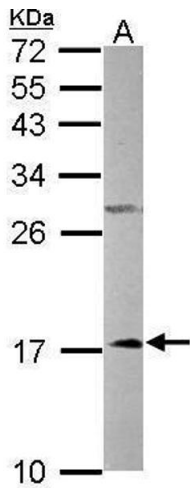
### Immunohistochemistry

**Image 1.** IHC-P Image Immunohistochemical analysis of paraffin-embedded Cal27 xenograft, using NDUFA12, antibody at 1:500 dilution.



### Immunofluorescence

**Image 2.** ICC/IF Image Immunofluorescence analysis of methanol-fixed HepG2, using NDUFA12, antibody at 1:200 dilution.



### Western Blotting

**Image 3.** WB Image Sample (50 ug of whole cell lysate) A: mouse liver 15% SDS PAGE antibody diluted at 1:1000

Please check the [product details page](#) for more images. Overall 5 images are available for ABIN2856686.