

Datasheet for ABIN2856687

anti-AKR1B10 antibody

6 Images

[Go to Product page](#)

Overview

Quantity:	100 µL
Target:	AKR1B10
Reactivity:	Human
Host:	Rabbit
Clonality:	Polyclonal
Conjugate:	This AKR1B10 antibody is un-conjugated
Application:	Western Blotting (WB), Immunofluorescence (IF), Immunohistochemistry (Paraffin-embedded Sections) (IHC (p)), Immunocytochemistry (ICC)

Product Details

Immunogen:	Full length human AKR1B10 Recombinant protein.
Isotype:	IgG
Cross-Reactivity:	Human, Mouse, Rat
Characteristics:	Rabbit Polyclonal antibody to AKR1B10 (aldo-keto reductase family 1, member B10 (aldose reductase)) AKR1B10 antibody
Purification:	Purified by antigen-affinity chromatography.

Target Details

Target:	AKR1B10
Alternative Name:	aldo-keto reductase family 1 member B10 (AKR1B10 Products)

Target Details

Background: This gene encodes a member of the aldo/keto reductase superfamily, which consists of more than 40 known enzymes and proteins. This member can efficiently reduce aliphatic and aromatic aldehydes, and it is less active on hexoses. It is highly expressed in adrenal gland, small intestine, and colon, and may play an important role in liver carcinogenesis.

Cellular Localization: Cytoplasm

Molecular Weight: 36 kDa

Gene ID: 57016

UniProt: [O60218](#)

Application Details

Application Notes: WB: 1:500-1:10000. ICC/IF: 1:100-1:1000. IHC-P: 1:100-1:1000. Optimal dilutions/concentrations should be determined by the researcher. Not tested in other applications.

Comment: Positive Control: mouse colon , rat colon

Restrictions: For Research Use only

Handling

Format: Liquid

Concentration: 1 mg/mL

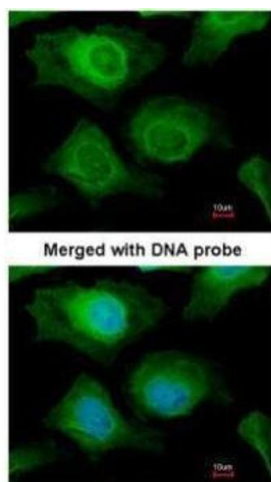
Buffer: 1XPBS (pH 7), 20 % Glycerol, 0.025 % ProClin 300

Preservative: ProClin

Precaution of Use: This product contains ProClin: a POISONOUS AND HAZARDOUS SUBSTANCE which should be handled by trained staff only.

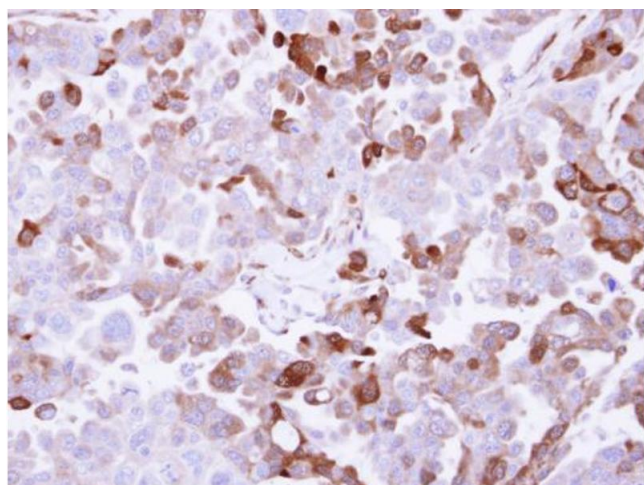
Storage: 4 °C,-20 °C

Storage Comment: Store as concentrated solution. Centrifuge briefly prior to opening vial. For short-term storage (1-2 weeks), store at 4°C. For long-term storage, aliquot and store at -20°C or below. Avoid multiple freeze-thaw cycles.



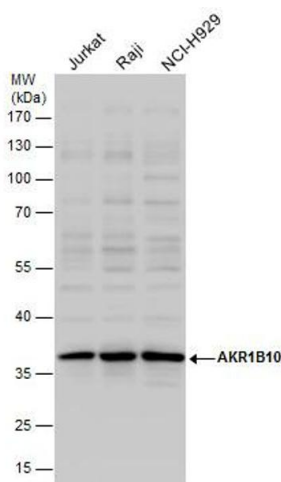
Immunofluorescence

Image 1. ICC/IF Image Immunofluorescence analysis of paraformaldehyde-fixed HeLa, using AKR1B10, antibody at 1:200 dilution.



Immunohistochemistry

Image 2. IHC-P Image Immunohistochemical analysis of paraffin-embedded OVCAR3 xenograft, using AKR1B10, antibody at 1:500 dilution.



Western Blotting

Image 3. WB Image AKR1B10 antibody detects AKR1B10 protein by western blot analysis. Various whole cell extracts (30 µg) were separated by 12% SDS-PAGE, and the membrane was blotted with AKR1B10 antibody, diluted by 1:2500.

Please check the [product details page](#) for more images. Overall 6 images are available for ABIN2856687.