

Datasheet for ABIN2856690
anti-PLEKHG4 antibody (N-Term)[Go to Product page](#)

1 Image

Overview

Quantity:	100 µL
Target:	PLEKHG4
Binding Specificity:	N-Term
Reactivity:	Human
Host:	Rabbit
Clonality:	Polyclonal
Conjugate:	This PLEKHG4 antibody is un-conjugated
Application:	Western Blotting (WB)

Product Details

Immunogen:	Recombinant protein encompassing a sequence within the N-terminus region of human PLEKHG4. The exact sequence is proprietary.
Isotype:	IgG
Characteristics:	Rabbit polyclonal antibody to PLEKHG4 (pleckstrin homology domain containing, family G (with RhoGef domain) member 4) PLEKHG4 antibody [N1N2], N-term
Purification:	Purified by antigen-affinity chromatography.

Target Details

Target:	PLEKHG4
Alternative Name:	PLEKHG4 (PLEKHG4 Products)

Target Details

Background: The protein encoded by this gene contains multiple domains suggestive of a role in intracellular signaling and cytoskeleton dynamics at the Golgi apparatus. Mutations in this gene are associated with spinocerebellar ataxia 16q22-linked. Several alternatively spliced transcript variants, differing only in the 5' UTR, or encoding a different isoform, have been found for this gene.

Molecular Weight: 131 kDa

Gene ID: 25894

Application Details

Application Notes: Suggested dilution Reference Western blot 1:500-1:3000* Not tested in other applications.
Optimal dilutions/concentrations should be determined by the researcher.Suggested dilutionReferenceWestern blot1:500-1:3000

Comment: Positive Control: 293T , A431 , Jurkat , Raji

Restrictions: For Research Use only

Handling

Format: Liquid

Concentration: 1 mg/mL

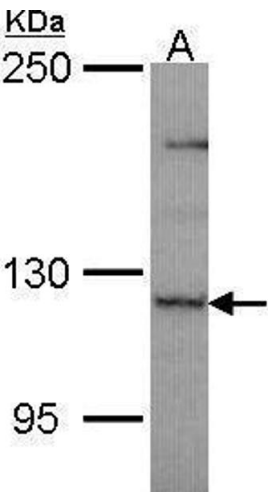
Buffer: 0.1M Tris, 0.1M Glycine, 20 % Glycerol (pH 7). 0.01 % Thimerosal was added as a preservative.

Preservative: Thimerosal (Merthiolate)

Precaution of Use: This product contains Thimerosal (Merthiolate): a POISONOUS AND HAZARDOUS SUBSTANCE which should be handled by trained staff only.

Storage: -20 °C

Storage Comment: Keep as concentrated solution. Aliquot and store at -20°C or below. Avoid multiple freeze-thaw cycles.



Western Blotting

Image 1. WB Image Sample (30 ug of whole cell lysate) A:
JurKat 5% SDS PAGE antibody diluted at 1:1000