

Datasheet for ABIN2856693

**anti-DECR1 antibody**

5 Images

[Go to Product page](#)

## Overview

Quantity:	100 µL
Target:	DECR1
Reactivity:	Human
Host:	Rabbit
Clonality:	Polyclonal
Conjugate:	This DECR1 antibody is un-conjugated
Application:	Western Blotting (WB), Immunohistochemistry (Paraffin-embedded Sections) (IHC (p)), Immunocytochemistry (ICC), Immunofluorescence (IF)

## Product Details

Immunogen:	Full length human DECR1 Recombinant protein.
Isotype:	IgG
Cross-Reactivity:	Human, Mouse, Rat
Characteristics:	Rabbit Polyclonal antibody to DECR1 (2,4-dienoyl CoA reductase 1, mitochondrial) DECR1 antibody [N1C3]
Purification:	Purified by antigen-affinity chromatography.

## Target Details

Target:	DECR1
Alternative Name:	2,4-dienoyl-CoA reductase 1 ( <a href="#">DECR1 Products</a> )

## Target Details

Background: This gene encodes an accessory enzyme which participates in the beta-oxidation and metabolism of unsaturated fatty enoyl-CoA esters.

Cellular Localization: Mitochondrion

Molecular Weight: 36 kDa

Gene ID: 1666

UniProt: [Q16698](#)

Pathways: [Monocarboxylic Acid Catabolic Process](#)

## Application Details

Application Notes: WB: 1:5000-1:20000. ICC/IF: 1:100-1:1000. IHC-P: 1:100-1:1000. Optimal dilutions/concentrations should be determined by the researcher. Not tested in other applications.

Comment: Positive Control: Mouse liver , HepG2 , Rat heart

Restrictions: For Research Use only

## Handling

Format: Liquid

Concentration: 1 mg/mL

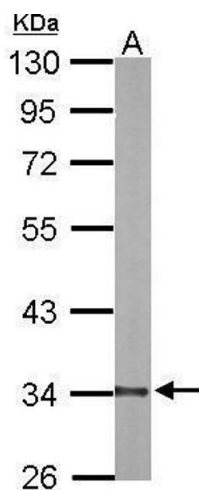
Buffer: 0.1M Tris-Glycine ( pH 7), 10 % Glycerol, 0.01 % Thimerosal

Preservative: Thimerosal (Merthiolate)

Precaution of Use: This product contains Thimerosal (Merthiolate): a POISONOUS AND HAZARDOUS SUBSTANCE which should be handled by trained staff only.

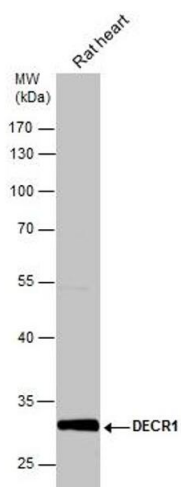
Storage: 4 °C,-20 °C

Storage Comment: Store as concentrated solution. Centrifuge briefly prior to opening vial. For short-term storage (1-2 weeks), store at 4°C. For long-term storage, aliquot and store at -20°C or below. Avoid multiple freeze-thaw cycles.



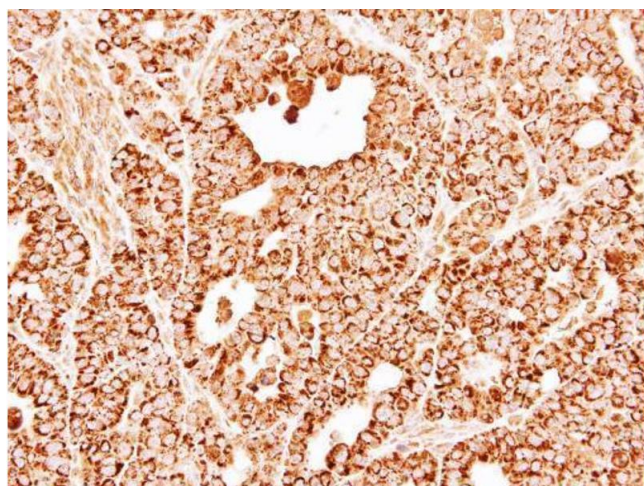
#### Western Blotting

**Image 1.** WB Image Sample (20 ug of whole cell lysate) A: mouse liver 10% SDS PAGE antibody diluted at 1:10000



#### Western Blotting

**Image 2.** WB Image Rat tissue extract (50 µg) was separated by 10% SDS-PAGE, and the membrane was blotted with DECRI antibody, diluted at 1:10000.



#### Immunohistochemistry

**Image 3.** IHC-P Image Immunohistochemical analysis of paraffin-embedded NCI-N87 xenograft, using DECRI, antibody at 1:500 dilution.

Please check the [product details page](#) for more images. Overall 5 images are available for ABIN2856693.