

Datasheet for ABIN2856694
anti-BHLHE40 antibody (N-Term)

3 Images

[Go to Product page](#)

Overview

Quantity:	100 µL
Target:	BHLHE40
Binding Specificity:	N-Term
Reactivity:	Human
Host:	Rabbit
Clonality:	Polyclonal
Application:	Western Blotting (WB), Immunofluorescence (IF), Immunohistochemistry (Paraffin-embedded Sections) (IHC (p)), Immunocytochemistry (ICC)

Product Details

Immunogen:	Carrier-protein conjugated synthetic peptide encompassing a sequence within the N-terminus region of human SHARP2. The exact sequence is proprietary.
Isotype:	IgG
Cross-Reactivity:	Human
Characteristics:	Rabbit polyclonal antibody to SHARP2 (basic helix-loop-helix domain containing, class B, 2) SHARP2 antibody [N1N2], N-term
Purification:	Purified by antigen-affinity chromatography.

Target Details

Target:	BHLHE40
Alternative Name:	basic helix-loop-helix family member e40 (BHLHE40 Products)

Target Details

Background: This gene encodes a basic helix-loop-helix protein expressed in various tissues. Expression in the chondrocytes is responsive to the addition of Bt2cAMP. The encoded protein is believed to be involved in the control of cell differentiation.

Cellular Localization: Nucleus

Molecular Weight: 46 kDa

Gene ID: 8553

UniProt: [O14503](#)

Pathways: [Photoperiodism](#)

Application Details

Application Notes: WB: 1:500-1:3000. ICC/IF: 1:100-1:1000. Optimal dilutions/concentrations should be determined by the researcher. Not tested in other applications.

Comment: Positive Control: 293T

Restrictions: For Research Use only

Handling

Format: Liquid

Concentration: 0.19 mg/mL

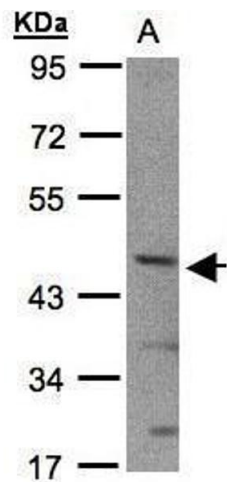
Buffer: 0.1M Tris-Glycine (pH 7), 10 % Glycerol, 0.01 % Thimerosal

Preservative: Thimerosal (Merthiolate)

Precaution of Use: This product contains Thimerosal (Merthiolate): a POISONOUS AND HAZARDOUS SUBSTANCE which should be handled by trained staff only.

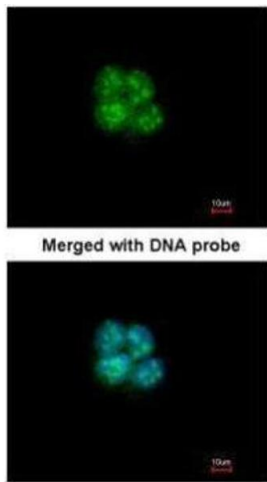
Storage: 4 °C, -20 °C

Storage Comment: Store as concentrated solution. Centrifuge briefly prior to opening vial. For short-term storage (1-2 weeks), store at 4°C. For long-term storage, aliquot and store at -20°C or below. Avoid multiple freeze-thaw cycles.



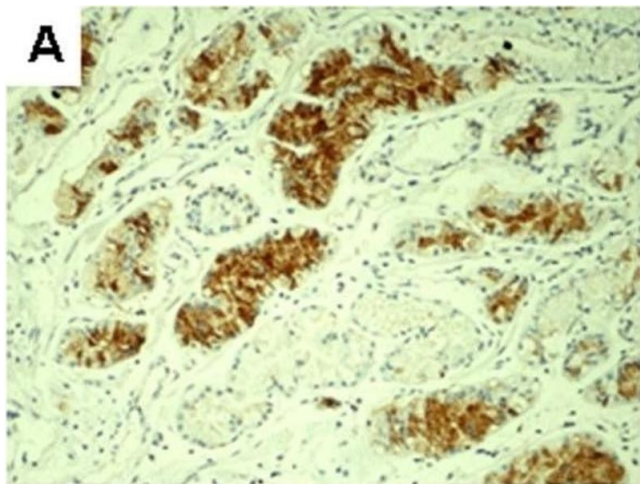
Western Blotting

Image 1. WB Image Sample(30 ug whole cell lysate) A:293T 10% SDS PAGE antibody diluted at 1:1000



Immunofluorescence

Image 2. ICC/IF Image Immunofluorescence analysis of paraformaldehyde-fixed A431, using SHARP2, antibody at 1:200 dilution.



Immunohistochemistry (Paraffin-embedded Sections)

Image 3. Expression of differentiated embryonic chondrocyte-expressed gene 1 (DEC1), hypoxia-inducible factor 1α (HIF-1α) and Ki67 protein in human gastric cancer tissue. Brown shows positive expression. Poorly differentiated gastric cancer with nuclear and cytoplasmic staining for DEC1 (A: SP, x 100, B: SP, x 400). Poorly differentiated gastric cancer with nuclear staining for HIF-1α (C: SP, x 100, D: SP, x 400). Poorly differentiated gastric cancer with nuclear staining for Ki67 (E: SP, x 100, F: SP, x 400). - figure provided by CiteAb. Source: PMID23445622