

Datasheet for ABIN2856697
anti-KAT2B antibody (C-Term)[2 Images](#)[2 Publications](#)[Go to Product page](#)

Overview

Quantity:	100 µL
Target:	KAT2B
Binding Specificity:	C-Term
Reactivity:	Human, Mouse
Host:	Rabbit
Clonality:	Polyclonal
Conjugate:	This KAT2B antibody is un-conjugated
Application:	Western Blotting (WB)

Product Details

Immunogen:	Carrier-protein conjugated synthetic peptide encompassing a sequence within the C-terminus region of human PCAF. The exact sequence is proprietary.
Isotype:	IgG
Cross-Reactivity:	Zebrafish (Danio rerio)
Cross-Reactivity (Details):	Zebrafish (88 %)
Characteristics:	Rabbit Polyclonal antibody to PCAF (K(lysine) acetyltransferase 2B) PCAF antibody [C3], C-term
Purification:	Purified by antigen-affinity chromatography.

Target Details

Target:	KAT2B
Alternative Name:	PCAF (KAT2B Products)
Background:	<p>CBP and p300 are large nuclear proteins that bind to many sequence-specific factors involved in cell growth and/or differentiation, including c-jun and the adenoviral oncoprotein E1A. The protein encoded by this gene associates with p300/CBP. It has in vitro and in vivo binding activity with CBP and p300, and competes with E1A for binding sites in p300/CBP. It has histone acetyl transferase activity with core histones and nucleosome core particles, indicating that this protein plays a direct role in transcriptional regulation.</p> <p>Cellular Localization: Nucleus</p>
Molecular Weight:	93 kDa
Gene ID:	8850
Pathways:	p53 Signaling , Regulation of Carbohydrate Metabolic Process

Application Details

Application Notes:	<p>Suggested dilution Reference Western blot 1:500-1:3000* Not tested in other applications.</p> <p>*Optimal dilutions/concentrations should be determined by the researcher.Suggested dilutionReferenceWestern blot1:500-1:3000*</p>
Comment:	Positive Control: 293T , A431 , H1299 , HeLaS3 , HepG2 , Molt-4 , Raji , mouse brain , *MFB
Restrictions:	For Research Use only

Handling

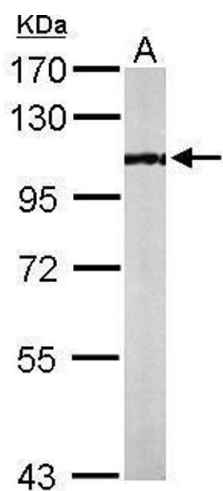
Format:	Liquid
Concentration:	1 mg/mL
Buffer:	1XPBS, 1 % BSA, 20 % Glycerol (pH 7). 0.01 % Thimerosal was added as a preservative.
Preservative:	Thimerosal (Merthiolate)
Precaution of Use:	This product contains Thimerosal (Merthiolate): a POISONOUS AND HAZARDOUS SUBSTANCE which should be handled by trained staff only.
Storage:	-20 °C
Storage Comment:	Keep as concentrated solution. Aliquot and store at -20°C or below. Avoid multiple freeze-thaw

cycles.

Publications

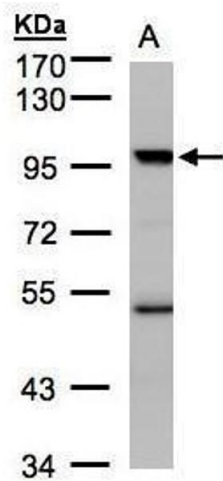
Product cited in: Xu, Zhou, Xiong, Zou, Deng, Ganaie, Kleiboeker, Peng, Liu, Wang, Ye, Qiu: "Parvovirus B19 NS1 protein induces cell cycle arrest at G2-phase by activating the ATR-CDC25C-CDK1 pathway." in: **PLoS pathogens**, Vol. 13, Issue 3, pp. e1006266, (2017) ([PubMed](#)).

Validation report #101746 for Immunofluorescence (IF)



Western Blotting

Image 1. WB Image Sample (50 ug of whole cell lysate) A: Mouse brain 7.5% SDS PAGE antibody diluted at 1:1000



Western Blotting

Image 2. WB Image Sample(30 ug whole cell lysate) A:Hep G2 , 7.5% SDS PAGE antibody diluted at 1:1000