



[Go to Product page](#)

Datasheet for ABIN2856698
anti-RAG2 antibody (Center)

4 Images

Overview

Quantity:	100 µL
Target:	RAG2
Binding Specificity:	Center
Reactivity:	Human, Rat
Host:	Rabbit
Clonality:	Polyclonal
Conjugate:	This RAG2 antibody is un-conjugated
Application:	Western Blotting (WB), Immunofluorescence (IF), Immunohistochemistry (Paraffin-embedded Sections) (IHC (p)), Immunocytochemistry (ICC)

Product Details

Immunogen:	Recombinant protein encompassing a sequence within the center region of human RAG2. The exact sequence is proprietary.
Isotype:	IgG
Cross-Reactivity:	Mouse (Murine), Pig (Porcine), Rabbit, Rat (Rattus), Cow (Bovine)
Cross-Reactivity (Details):	Mouse (85 %), Pig (90 %), Rabbit (91 %), Rat (86 %), Bovine (91 %)
Characteristics:	Rabbit Polyclonal antibody to RAG2 (recombination activating gene 2) RAG2 antibody
Purification:	Purified by antigen-affinity chromatography.

Target Details

Target: RAG2

Alternative Name: RAG2 ([RAG2 Products](#))

Background: This gene encodes a protein that is involved in the initiation of V(D)J recombination during B and T cell development. This protein forms a complex with the product of the adjacent recombination activating gene 1, and this complex can form double-strand breaks by cleaving DNA at conserved recombination signal sequences. The recombination activating gene 1 component is thought to contain most of the catalytic activity, while the N-terminal of the recombination activating gene 2 component is thought to form a six-bladed propeller in the active core that serves as a binding scaffold for the tight association of the complex with DNA. A C-terminal plant homeodomain finger-like motif in this protein is necessary for interactions with chromatin components, specifically with histone H3 that is trimethylated at lysine 4. Mutations in this gene cause Omenn syndrome, a form of severe combined immunodeficiency associated with autoimmune-like symptoms.

Cellular Localization: Nucleus

Molecular Weight: 59 kDa

Gene ID: 5897

Pathways: [Chromatin Binding](#), [Production of Molecular Mediator of Immune Response](#)

Application Details

Application Notes: Suggested dilution Reference ICC/IF 1:100-1:1000* IHC (Formalin-fixed paraffin-embedded sections) 1:100-1:1000* Western blot 1:500-1:3000* Not tested in other applications. *Optimal dilutions/concentrations should be determined by the researcher.Suggested dilutionReferenceICC/IF1:100-1:1000* IHC (Formalin-fixed paraffin-embedded sections)1:100-1:1000* Western blot1:500-1:3000*

Comment: Positive Control: Molt-4 , rat thymus

Restrictions: For Research Use only

Handling

Format: Liquid

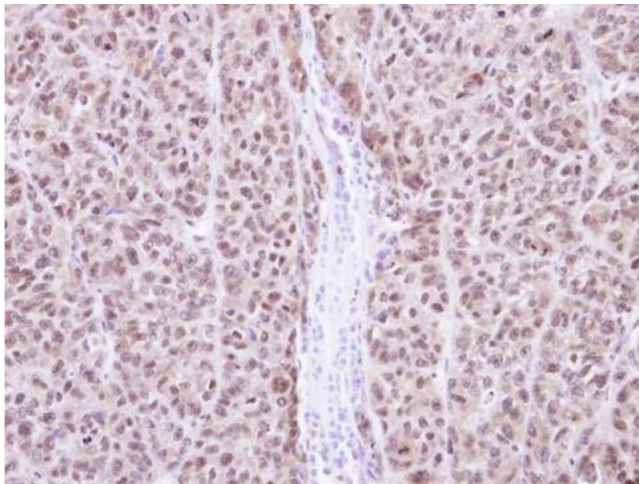
Concentration: 0.37 mg/mL

Buffer: 0.1M Tris, 0.1M Glycine, 10 % Glycerol (pH 7). 0.01 % Thimerosal was added as a preservative.

Handling

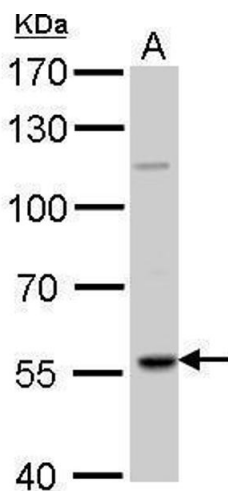
Preservative:	Thimerosal (Merthiolate)
Precaution of Use:	This product contains Thimerosal (Merthiolate): a POISONOUS AND HAZARDOUS SUBSTANCE which should be handled by trained staff only.
Storage:	-20 °C
Storage Comment:	Keep as concentrated solution. Aliquot and store at -20°C or below. Avoid multiple freeze-thaw cycles.

Images



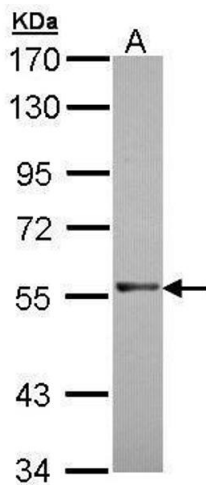
Immunohistochemistry

Image 1. IHC-P Image Immunohistochemical analysis of paraffin-embedded DLD1 Xenograft, using RAG2, antibody at 1:100 dilution.



Western Blotting

Image 2. WB Image RAG2 antibody detects RAG2 protein by Western blot analysis. A. 50 µg Rat thymus lysate/extract 7.5 % SDS-PAGE RAG2 antibody , dilution: 1:1000



Western Blotting

Image 3. WB Image Sample (30 ug of whole cell lysate) A:
Molt-4 , 7.5% SDS PAGE antibody diluted at 1:1000

Please check the [product details page](#) for more images. Overall 4 images are available for ABIN2856698.