

Datasheet for ABIN2856699
anti-SMC1A antibody (N-Term)

3 Images

[Go to Product page](#)

Overview

Quantity:	100 µL
Target:	SMC1A
Binding Specificity:	N-Term
Reactivity:	Human
Host:	Rabbit
Clonality:	Polyclonal
Conjugate:	This SMC1A antibody is un-conjugated
Application:	Western Blotting (WB), Immunohistochemistry (Paraffin-embedded Sections) (IHC (p)), Immunoprecipitation (IP)

Product Details

Immunogen:	Recombinant protein encompassing a sequence within the N-terminus region of human SMC1A. The exact sequence is proprietary.
Isotype:	IgG
Cross-Reactivity:	Human, Zebrafish (Danio rerio)
Characteristics:	Rabbit Polyclonal antibody to SMC1A (structural maintenance of chromosomes 1A) SMC1A antibody [N1N2], N-term
Purification:	Purified by antigen-affinity chromatography.

Target Details

Target:	SMC1A
---------	-------

Target Details

Alternative Name:	structural maintenance of chromosomes 1A (SMC1A Products)
Background:	<p>Proper cohesion of sister chromatids is a prerequisite for the correct segregation of chromosomes during cell division. The cohesin multiprotein complex is required for sister chromatid cohesion. This complex is composed partly of two structural maintenance of chromosomes (SMC) proteins, SMC3 and either SMC1L2 or the protein encoded by this gene. Most of the cohesin complexes dissociate from the chromosomes before mitosis, although those complexes at the kinetochore remain. Therefore, the encoded protein is thought to be an important part of functional kinetochores. In addition, this protein interacts with BRCA1 and is phosphorylated by ATM, indicating a potential role for this protein in DNA repair. This gene, which belongs to the SMC gene family, is located in an area of the X-chromosome that escapes X inactivation.</p> <p>Cellular Localization: Nucleus , Kinetochore</p>
Molecular Weight:	143 kDa
Gene ID:	8243
UniProt:	Q14683
Pathways:	Stem Cell Maintenance

Application Details

Application Notes:	WB: 1:1000-1:10000. IHC-P: 1:100-1:1000. IP: 1:100-1:500. Optimal dilutions/concentrations should be determined by the researcher. Not tested in other applications.
Comment:	Positive Control: Molt-4
Restrictions:	For Research Use only

Handling

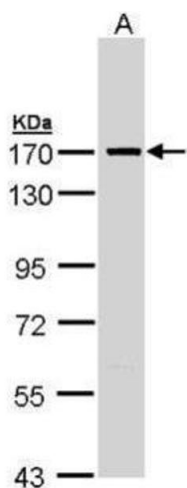
Format:	Liquid
Concentration:	1 mg/mL
Buffer:	0.1M Tris-Glycine (pH 7), 10 % Glycerol, 0.01 % Thimerosal
Preservative:	Thimerosal (Merthiolate)
Precaution of Use:	This product contains Thimerosal (Merthiolate): a POISONOUS AND HAZARDOUS SUBSTANCE which should be handled by trained staff only.

Handling

Storage: 4 °C, -20 °C

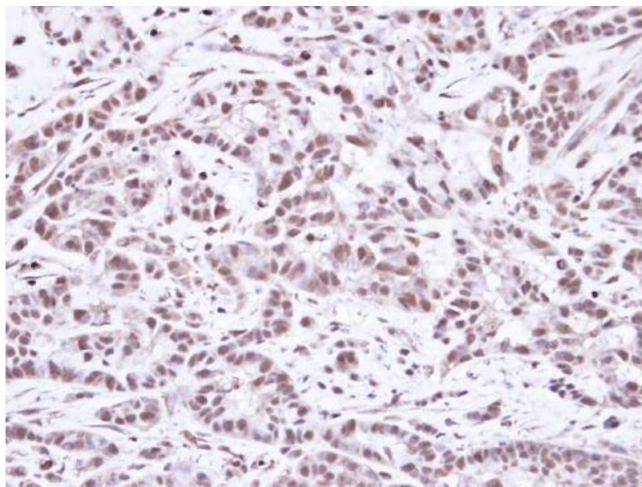
Storage Comment: Store as concentrated solution. Centrifuge briefly prior to opening vial. For short-term storage (1-2 weeks), store at 4°C. For long-term storage, aliquot and store at -20°C or below. Avoid multiple freeze-thaw cycles.

Images



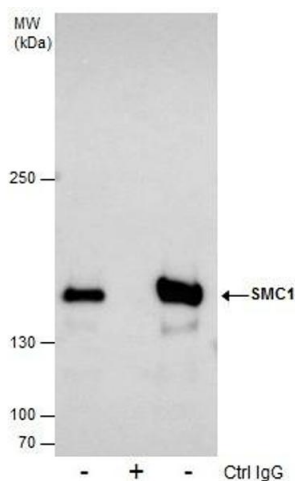
Western Blotting

Image 1. WB Image Sample (30 ug of whole cell lysate) A: Molt-4 , 7.5% SDS PAGE antibody diluted at 1:5000



Immunohistochemistry

Image 2. IHC-P Image Immunohistochemical analysis of paraffin-embedded A549 Xenograft, using SMC1A, antibody at 1:100 dilution.



Immunoprecipitation

Image 3. IP Image Immunoprecipitation of SMC1A protein from 293T whole cell extracts using 5 µg of SMC1A antibody [N1N2], N-term, Western blot analysis was performed using SMC1A antibody [N1N2], N-term, EasyBlot anti-Rabbit IgG was used as a secondary reagent.