

Datasheet for ABIN2856700  
**anti-DDX3X antibody (Center)**

## 5 Images

[Go to Product page](#)

## Overview

Quantity:	100 µL
Target:	DDX3X
Binding Specificity:	Center
Reactivity:	Human, Mouse, Rat
Host:	Rabbit
Clonality:	Polyclonal
Application:	Western Blotting (WB), Immunofluorescence (IF), Immunocytochemistry (ICC)

## Product Details

Immunogen:	Recombinant protein encompassing a sequence within the center region of human DDX3. The exact sequence is proprietary.
Isotype:	IgG
Characteristics:	Rabbit Polyclonal antibody to DDX3 (DEAD (Asp-Glu-Ala-Asp) box polypeptide 3, Y-linked) DDX3 antibody
Purification:	Purified by antigen-affinity chromatography.

## Target Details

Target:	DDX3X
Alternative Name:	DDX3 ( <a href="#">DDX3X Products</a> )
Background:	DEAD box proteins, characterized by the conserved motif Asp-Glu-Ala-Asp (DEAD), are putative RNA helicases. They are implicated in a number of cellular processes involving alteration of

## Target Details

RNA secondary structure such as translation initiation, nuclear and mitochondrial splicing, and ribosome and spliceosome assembly. Based on their distribution patterns, some members of this family are believed to be involved in embryogenesis, spermatogenesis, and cellular growth and division. This gene encodes a DEAD box protein, and it has a homolog on the X chromosome. The gene mutation causes male infertility, Sertoli cell-only syndrome or severe hypospermatogenesis, suggesting that this gene plays a key role in the spermatogenic process. Alternatively spliced variants, encoding the same protein, have been identified.

Cellular Localization: Cytoplasm , Nucleus

Molecular Weight: 73 kDa

Gene ID: 8653

Pathways: [Ribonucleoprotein Complex Subunit Organization](#), [Positive Regulation of Endopeptidase Activity](#), [Negative Regulation of intrinsic apoptotic Signaling](#), [Ribosome Assembly](#)

## Application Details

Application Notes: Suggested dilution Reference ICC/IF 1:100-1:1000\* Western blot 1:1000-1:10000\* Not tested in other applications. \*Optimal dilutions/concentrations should be determined by the researcher.Suggested dilutionReferenceICC/IF1:100-1:1000\* Western blot1:1000-1:10000\*

Comment: Positive Control: H1299 , HepG2 , mouse brain , rat testis , Jurkat , Raji , NCI-H929

Restrictions: For Research Use only

## Handling

Format: Liquid

Concentration: 0.77 mg/mL

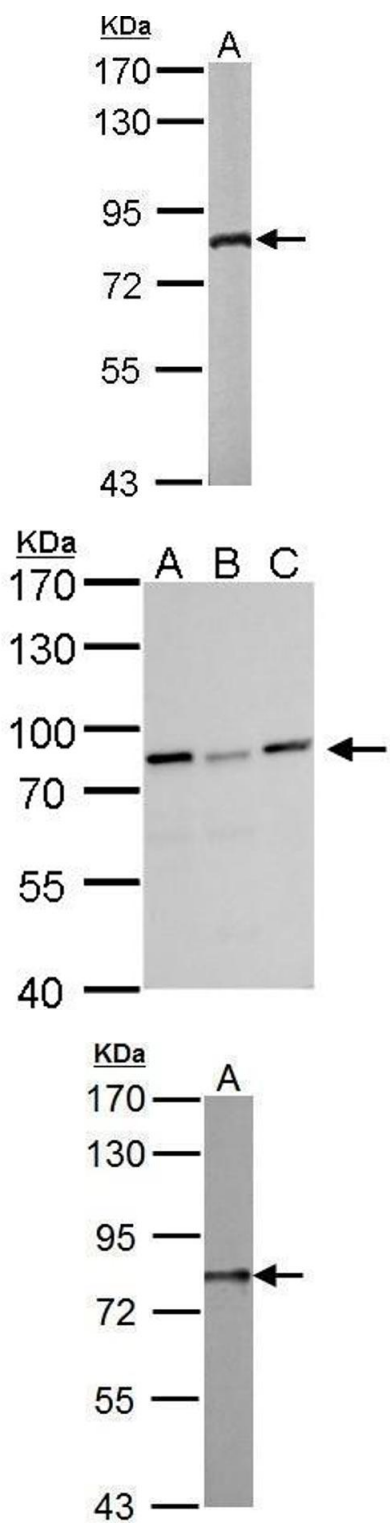
Buffer: 0.1M Tris, 0.1M Glycine, 10 % Glycerol ( pH 7). 0.01 % Thimerosal was added as a preservative.

Preservative: Thimerosal (Merthiolate)

Precaution of Use: This product contains Thimerosal (Merthiolate): a POISONOUS AND HAZARDOUS SUBSTANCE which should be handled by trained staff only.

Storage: -20 °C

Storage Comment: Keep as concentrated solution. Aliquot and store at -20°C or below. Avoid multiple freeze-thaw cycles.



Western Blotting

**Image 1.** WB Image Sample (50 ug of whole cell lysate) A: Mouse brain 7.5% SDS PAGE antibody diluted at 1:1000

Western Blotting

**Image 2.** WB Image DDX3 antibody detects DDX3 protein by Western blot analysis. A. 30 µg Jurkat B. 30 µg Raji C. 30 µg NCI-H929 7.5 % SDS-PAGE DDX3 antibody , dilution: 1:10000

Western Blotting

**Image 3.** WB Image DDX3 antibody detects DDX3Y protein by Western blot analysis. A. 50 µg Rat testis lysate/extract 7.5 % SDS-PAGE DDX3 antibody , dilution: 1:1000

Please check the [product details page](#) for more images. Overall 5 images are available for ABIN2856700.