

Datasheet for ABIN2856701

anti-SUCLA2 antibody

5 Images

[Go to Product page](#)

Overview

Quantity:	100 µL
Target:	SUCLA2
Reactivity:	Human
Host:	Rabbit
Clonality:	Polyclonal
Conjugate:	This SUCLA2 antibody is un-conjugated
Application:	Western Blotting (WB), Immunocytochemistry (ICC), Immunofluorescence (IF), Immunohistochemistry (Paraffin-embedded Sections) (IHC (p))

Product Details

Immunogen:	Recombinant protein encompassing a sequence within the center region of human SUCLA2. The exact sequence is proprietary.
Isotype:	IgG
Cross-Reactivity:	Human, Mouse
Characteristics:	Rabbit Polyclonal antibody to SUCLA2 (succinate-CoA ligase, ADP-forming, beta subunit) SUCLA2 antibody [N2C3]
Purification:	Purified by antigen-affinity chromatography.
Grade:	KO Validated

Target Details

Target:	SUCLA2
---------	--------

Target Details

Alternative Name:	succinate-CoA ligase ADP-forming beta subunit (SUCLA2 Products)
Background:	<p>Succinyl-CoA synthetase (SCS) is a mitochondrial matrix enzyme that acts as a heterodimer, being composed of an invariant alpha subunit and a substrate-specific beta subunit. The protein encoded by this gene is an ATP-specific SCS beta subunit that dimerizes with the SCS alpha subunit to form SCS-A, an essential component of the tricarboxylic acid cycle. SCS-A hydrolyzes ATP to convert succinate to succinyl-CoA. Defects in this gene are a cause of myopathic mitochondrial DNA depletion syndrome. A pseudogene of this gene has been found on chromosome 6.</p> <p>Cellular Localization: Mitochondrion</p>
Molecular Weight:	50 kDa
Gene ID:	8803
UniProt:	Q9P2R7

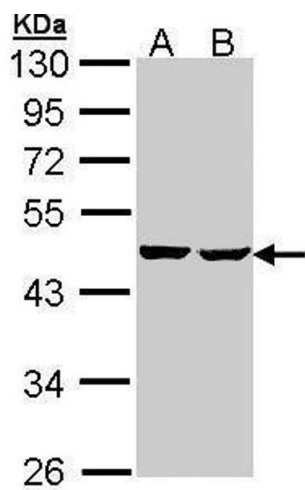
Application Details

Application Notes:	WB: 1:500-1:3000. ICC/IF: 1:100-1:1000. IHC-P: 1:100-1:1000. Optimal dilutions/concentrations should be determined by the researcher. Not tested in other applications.
Comment:	Positive Control: Mouse brain , HepG2 , Molt-4 , HeLa Validation: KO/KD
Restrictions:	For Research Use only

Handling

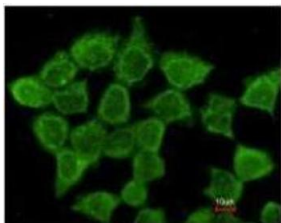
Format:	Liquid
Concentration:	1 mg/mL
Buffer:	0.1M Tris-Glycine (pH 7), 10 % Glycerol, 0.01 % Thimerosal
Preservative:	Thimerosal (Merthiolate)
Precaution of Use:	This product contains Thimerosal (Merthiolate): a POISONOUS AND HAZARDOUS SUBSTANCE which should be handled by trained staff only.
Storage:	4 °C,-20 °C
Storage Comment:	Store as concentrated solution. Centrifuge briefly prior to opening vial. For short-term storage (1-2 weeks), store at 4°C. For long-term storage, aliquot and store at -20°C or below. Avoid

multiple freeze-thaw cycles.

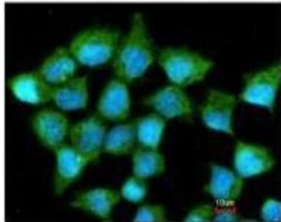


Western Blotting

Image 1. WB Image Sample (30 ug of whole cell lysate) A: Hep G2 , B: Molt-4 , 10% SDS PAGE antibody diluted at 1:1000

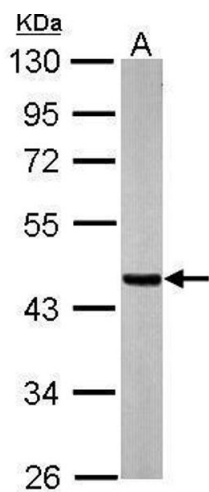


Costained with Hoechst 33342



Immunofluorescence

Image 2. ICC/IF Image Immunofluorescence analysis of methanol-fixed A431, using SUCLA2, antibody at 1:200 dilution.



Western Blotting

Image 3. WB Image Sample (20 ug of whole cell lysate) A: mouse brain 10% SDS PAGE antibody diluted at 1:20000

Please check the [product details page](#) for more images. Overall 5 images are available for ABIN2856701.