

Datasheet for ABIN2856704  
**anti-TSPYL1 antibody**



[Go to Product page](#)

3 Images

Overview

|              |   |
|--------------|---|
| Quantity:    | 100 µL  |
| Target:      | TSPYL1  |
| Reactivity:  | Human   |
| Host:        | Rabbit  |
| Clonality:   | Polyclonal  |
| Conjugate:   | This TSPYL1 antibody is un-conjugated   |
| Application: | Western Blotting (WB), Immunofluorescence (IF), Immunocytochemistry (ICC),<br>Immunohistochemistry (Paraffin-embedded Sections) (IHC (p)) |

Product Details

|                   |   |
|-------------------|---|
| Immunogen:        | Recombinant protein encompassing a sequence within the center region of human TSPYL1.<br>The exact sequence is proprietary. |
| Isotype:          | IgG   |
| Cross-Reactivity: | Human   |
| Characteristics:  | Rabbit Polyclonal antibody to TSPYL1 (TSPY-like 1)<br>TSPYL1 antibody   |
| Purification:     | Purified by antigen-affinity chromatography.  |

Target Details

|                   |   |
|-------------------|---|
| Target:           | TSPYL1  |
| Alternative Name: | TSPY like 1 ( <a href="#">TSPYL1 Products</a> ) |

## Target Details

---

**Background:** The protein encoded by this gene is found in the nucleolus and is similar to that of a family of genes on the Y-chromosome. This gene is intronless. Defects in this gene are a cause of sudden infant death with dysgenesis of the testes syndrome (SIDDT).

Cellular Localization: Nucleus , nucleolus

---

**Molecular Weight:** 49 kDa

---

**Gene ID:** 7259

---

**UniProt:** [Q9H0U9](#)

## Application Details

---

**Application Notes:** WB: 1:500-1:3000. ICC/IF: 1:100-1:1000. IHC-P: 1:100-1:1000. Optimal dilutions/concentrations should be determined by the researcher. Not tested in other applications.

---

**Comment:** Positive Control: Molt-4 , Raji

---

**Restrictions:** For Research Use only

## Handling

---

**Format:** Liquid

---

**Concentration:** 1 mg/mL

---

**Buffer:** 0.1M Tris-Glycine ( pH 7), 10 % Glycerol, 0.01 % Thimerosal

---

**Preservative:** Thimerosal (Merthiolate)

---

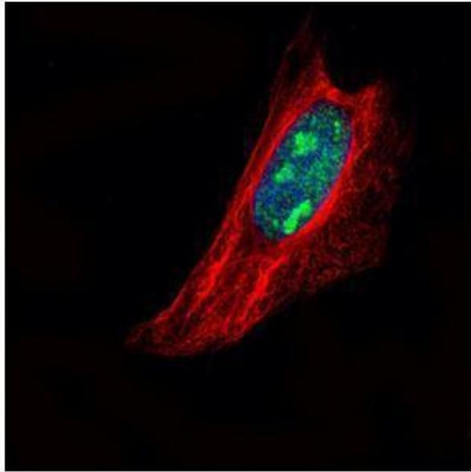
**Precaution of Use:** This product contains Thimerosal (Merthiolate): a POISONOUS AND HAZARDOUS SUBSTANCE which should be handled by trained staff only.

---

**Storage:** 4 °C,-20 °C

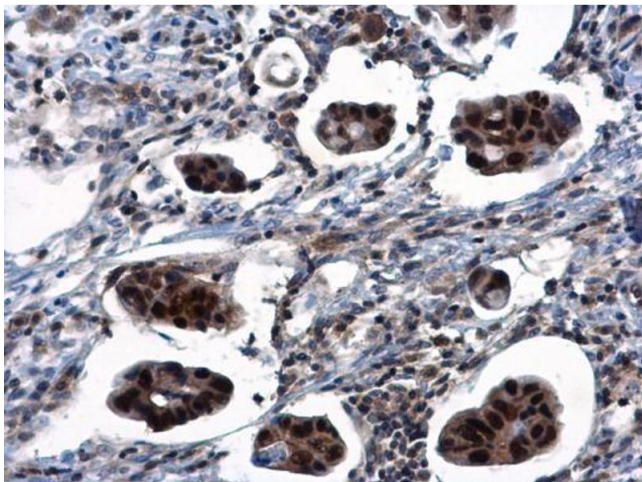
---

**Storage Comment:** Store as concentrated solution. Centrifuge briefly prior to opening vial. For short-term storage (1-2 weeks), store at 4°C. For long-term storage, aliquot and store at -20°C or below. Avoid multiple freeze-thaw cycles.



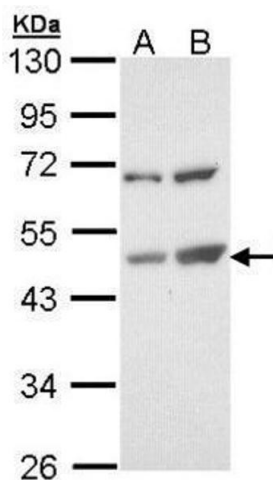
### Immunofluorescence

**Image 1.** ICC/IF Image Confocal immunofluorescence analysis (Olympus FV10i) of paraformaldehyde-fixed HeLa, using TSPYL1, antibody (Green) at 1:500 dilution. Alpha-tubulin filaments were labeled with (Red) at 1:2500.



### Immunohistochemistry

**Image 2.** IHC-P Image TSPYL1 antibody detects TSPYL1 protein at nucleus in human breast cancer by immunohistochemical analysis. Sample: Paraffin-embedded human breast cancer. TSPYL1 antibody, diluted at 1:500.



### Western Blotting

**Image 3.** WB Image Sample (30 ug of whole cell lysate) A: Molt-4, B: Raji 10% SDS PAGE antibody diluted at 1:1000