



[Go to Product page](#)

Datasheet for ABIN2856705

anti-AUTS2 antibody (Internal Region)

2 Images

Overview

Quantity:	100 µL
Target:	AUTS2
Binding Specificity:	Internal Region
Reactivity:	Human, Mouse
Host:	Rabbit
Clonality:	Polyclonal
Conjugate:	This AUTS2 antibody is un-conjugated
Application:	Western Blotting (WB)

Product Details

Immunogen:	Recombinant protein encompassing a sequence within the center region of human AUTS2. The exact sequence is proprietary.
Isotype:	IgG
Characteristics:	Rabbit polyclonal antibody to AUTS2 (autism susceptibility candidate 2) AUTS2 antibody [N3C1], Internal
Purification:	Purified by antigen-affinity chromatography.

Target Details

Target:	AUTS2
Alternative Name:	AUTS2 (AUTS2 Products)

Target Details

Molecular Weight: 139 kDa

Gene ID: 26053

Application Details

Application Notes: Suggested dilution Reference Western blot 1:500-1:3000* Not tested in other applications.
Optimal dilutions/concentrations should be determined by the researcher.Suggested dilutionReferenceWestern blot1:500-1:3000

Comment: Positive Control: 293T , H1299 , HepG2 , Raji , NIH-3T3

Restrictions: For Research Use only

Handling

Format: Liquid

Concentration: 1 mg/mL

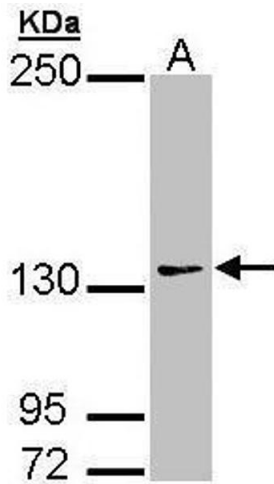
Buffer: 0.1M Tris, 0.1M Glycine, 10 % Glycerol (pH 7). 0.01 % Thimerosal was added as a preservative.

Preservative: Thimerosal (Merthiolate)

Precaution of Use: This product contains Thimerosal (Merthiolate): a POISONOUS AND HAZARDOUS SUBSTANCE which should be handled by trained staff only.

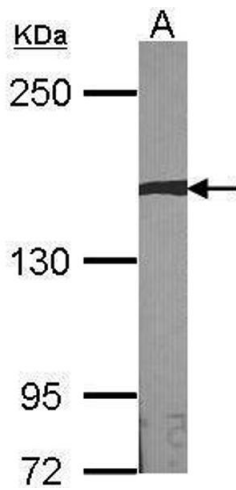
Storage: -20 °C

Storage Comment: Keep as concentrated solution. Aliquot and store at -20°C or below. Avoid multiple freeze-thaw cycles.



Western Blotting

Image 1. WB Image Sample (30 ug of whole cell lysate) A:
293T 7.5% SDS PAGE antibody diluted at 1:1000



Western Blotting

Image 2. WB Image Sample (30 ug of whole cell lysate)
A:NIH-3T3 5% SDS PAGE antibody diluted at 1:1000