

Datasheet for ABIN2856707

**anti-TUBA1A antibody**[Go to Product page](#)

7 Images

1 Publication

## Overview

Quantity:	100 µL
Target:	TUBA1A (Tuba1a)
Reactivity:	Human
Host:	Rabbit
Clonality:	Polyclonal
Conjugate:	This TUBA1A antibody is un-conjugated
Application:	Western Blotting (WB), Immunofluorescence (IF), Immunocytochemistry (ICC), Immunohistochemistry (Paraffin-embedded Sections) (IHC (p))

## Product Details

Immunogen:	Recombinant protein encompassing a sequence within the center region of human alpha Tubulin 1A. The exact sequence is proprietary.
Isotype:	IgG
Cross-Reactivity:	Drosophila melanogaster, Human, Mouse, Rat
Characteristics:	Rabbit Polyclonal antibody to alpha Tubulin 1A (tubulin, alpha 1a) alpha Tubulin 1A antibody
Purification:	Purified by antigen-affinity chromatography.

## Target Details

Target:	TUBA1A (Tuba1a)
Alternative Name:	tubulin alpha 1a ( <a href="#">Tuba1a Products</a> )

## Target Details

**Background:** Microtubules of the eukaryotic cytoskeleton perform essential and diverse functions and are composed of a heterodimer of alpha and beta tubulins. The genes encoding these microtubule constituents belong to the tubulin superfamily, which is composed of six distinct families. Genes from the alpha, beta and gamma tubulin families are found in all eukaryotes. The alpha and beta tubulins represent the major components of microtubules, while gamma tubulin plays a critical role in the nucleation of microtubule assembly. There are multiple alpha and beta tubulin genes, which are highly conserved among species. This gene encodes alpha tubulin and is highly similar to mouse and rat Tuba1 gene. Northern blotting studies have shown that the gene expression is predominantly found in morphologically differentiated neurologic cells. This gene is one of three alpha-tubulin genes in a cluster on chromosome 12q.

**Molecular Weight:** 50 kDa

**Gene ID:** 7846

**UniProt:** [Q71U36](#)

**Pathways:** [Microtubule Dynamics](#), [M Phase](#)

## Application Details

**Application Notes:** WB: 1:500-1:20000. ICC/IF: 1:100-1:1000. IHC-P: 1:100-1:1000. Optimal dilutions/concentrations should be determined by the researcher. Not tested in other applications.

**Comment:** Positive Control: NIH-3T3 , mouse brain , Jurkat , Raji , 293T , A431 , HeLa , HepG2 , H1299 , HCT116 , MCF-7 , NT2D1 , PC-3 , U87-MG , rat brain

**Restrictions:** For Research Use only

## Handling

**Format:** Liquid

**Concentration:** 0.73 mg/mL

**Buffer:** 1XPBS pH 7, 20 % Glycerol, 0.025 % ProClin 300

**Preservative:** ProClin

**Precaution of Use:** This product contains ProClin: a POISONOUS AND HAZARDOUS SUBSTANCE which should be handled by trained staff only.

**Storage:** 4 °C, -20 °C

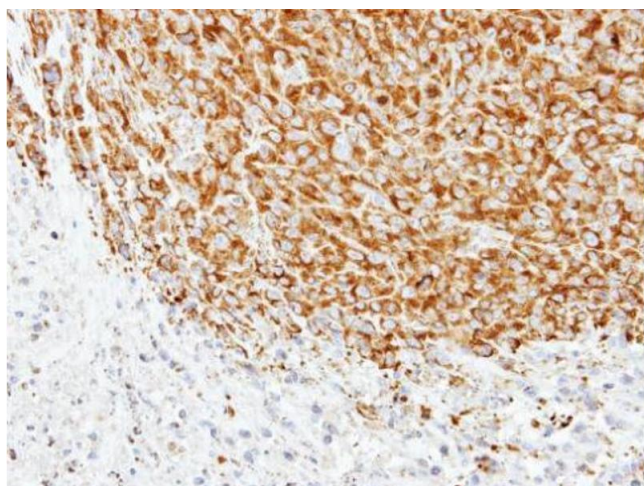
## Handling

**Storage Comment:** Store as concentrated solution. Centrifuge briefly prior to opening vial. For short-term storage (1-2 weeks), store at 4°C. For long-term storage, aliquot and store at -20°C or below. Avoid multiple freeze-thaw cycles.

## Publications

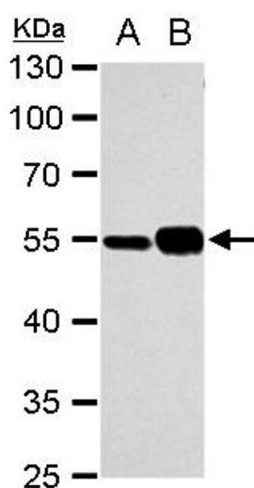
**Product cited in:** Xu, Zhou, Xiong, Zou, Deng, Ganaie, Kleiboeker, Peng, Liu, Wang, Ye, Qiu: "Parvovirus B19 NS1 protein induces cell cycle arrest at G2-phase by activating the ATR-CDC25C-CDK1 pathway." in: **PLoS pathogens**, Vol. 13, Issue 3, pp. e1006266, (2017) ([PubMed](#)).

## Validation report #101746 for Immunofluorescence (IF)



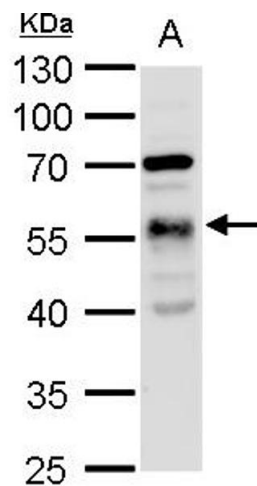
### Immunohistochemistry

**Image 1.** IHC-P Image Immunohistochemical analysis of paraffin-embedded SAS xenograft, using alpha Tubulin 1A, antibody at 1:500 dilution.



### Western Blotting

**Image 2.** WB Image alpha Tubulin 1A antibody detects alpha Tubulin 1A protein by western blot analysis. A. 30 µg NIH-3T3 whole cell extract B. 30 µg mouse brain extract 10 % SDS-PAGE alpha Tubulin 1A antibody , dilution: 1:10000



Western Blotting

**Image 3.** WB Image alpha Tubulin 1A antibody detects alpha Tubulin 1A protein by western blot analysis. A. 30 µg drosophila lysate/extract 10 % SDS-PAGE alpha Tubulin 1A antibody , dilution: 1:1000

Please check the [product details page](#) for more images. Overall 7 images are available for ABIN2856707.