



[Go to Product page](#)

Datasheet for ABIN2856715

## anti-CCT5 antibody

### 4 Images

#### Overview

Quantity:	100 µL
Target:	CCT5
Reactivity:	Human
Host:	Rabbit
Clonality:	Polyclonal
Application:	Western Blotting (WB), Immunofluorescence (IF), Immunohistochemistry (Paraffin-embedded Sections) (IHC (p)), Immunocytochemistry (ICC), Immunohistochemistry (Frozen Sections) (IHC (fro))

#### Product Details

Immunogen:	Recombinant protein encompassing a sequence within the center region of human TCP1 epsilon. The exact sequence is proprietary.
Isotype:	IgG
Cross-Reactivity:	Human, Mouse, Zebrafish (Danio rerio)
Characteristics:	Rabbit Polyclonal antibody to TCP1 epsilon (chaperonin containing TCP1, subunit 5 (epsilon)) TCP1 epsilon antibody [N1N3]
Purification:	Purified by antigen-affinity chromatography.
Grade:	KO Validated

#### Target Details

Target:	CCT5
---------	------

## Target Details

---

Alternative Name: chaperonin containing TCP1 subunit 5 ([CCT5 Products](#))

---

Background: This gene encodes a molecular chaperone that is member of the chaperonin containing TCP1 complex (CCT), also known as the TCP1 ring complex (TRiC). This complex consists of two identical stacked rings, each containing eight different proteins. Unfolded polypeptides enter the central cavity of the complex and are folded in an ATP-dependent manner. The complex folds various proteins, including actin and tubulin. Alternate transcriptional splice variants of this gene have been observed but have not been thoroughly characterized.

Cellular Localization: Cytoplasm

---

Molecular Weight: 60 kDa

---

Gene ID: 22948

---

UniProt: [P48643](#)

---

## Application Details

---

Application Notes: WB: 1:500-1:10000. ICC/IF: 1:100-1:1000. IHC-P: 1:100-1:1000. Optimal dilutions/concentrations should be determined by the researcher. Not tested in other applications.

---

Comment: Positive Control: Mouse brain , 293T  
Validation: KO/KD

---

Restrictions: For Research Use only

---

## Handling

---

Format: Liquid

---

Concentration: 1 mg/mL

---

Buffer: 0.1M Tris-Glycine ( pH 7), 10 % Glycerol, 0.01 % Thimerosal

---

Preservative: Thimerosal (Merthiolate)

---

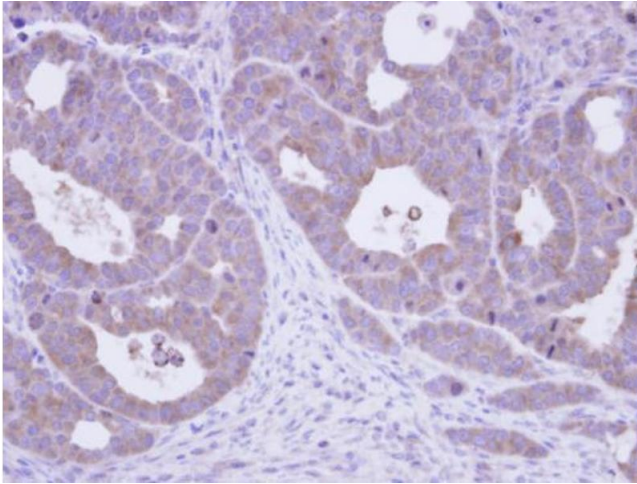
Precaution of Use: This product contains Thimerosal (Merthiolate): a POISONOUS AND HAZARDOUS SUBSTANCE which should be handled by trained staff only.

---

Storage: 4 °C, -20 °C

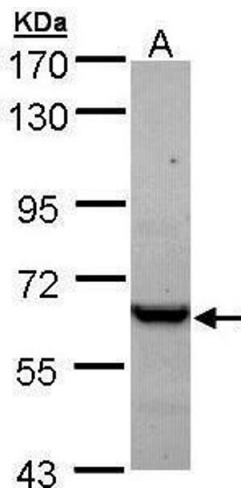
---

Storage Comment: Store as concentrated solution. Centrifuge briefly prior to opening vial. For short-term storage (1-2 weeks), store at 4°C. For long-term storage, aliquot and store at -20°C or below. Avoid multiple freeze-thaw cycles.



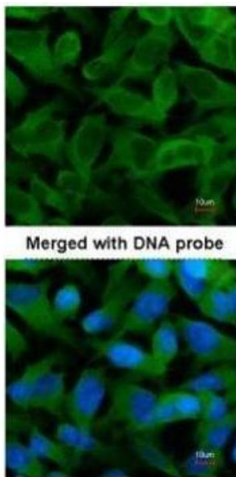
### Immunohistochemistry

**Image 1.** IHC-P Image Immunohistochemical analysis of paraffin-embedded NCIN87 xenograft, using TCP-1 epsilon, antibody at 1:500 dilution.



### Western Blotting

**Image 2.** WB Image Sample (30 ug of whole cell lysate) A: A431, 7.5% SDS PAGE antibody diluted at 1:1000



### Immunofluorescence

**Image 3.** ICC/IF Image Immunofluorescence analysis of paraformaldehyde-fixed HeLa, using TCP-1 epsilon, antibody at 1:200 dilution.

Please check the [product details page](#) for more images. Overall 4 images are available for ABIN2856715.