

Datasheet for ABIN2856717

**anti-PNLIP antibody**

## 4 Images

[Go to Product page](#)

## Overview

Quantity:	100 µL
Target:	PNLIP
Reactivity:	Human
Host:	Rabbit
Clonality:	Polyclonal
Conjugate:	This PNLIP antibody is un-conjugated
Application:	Western Blotting (WB), Immunofluorescence (IF), Immunocytochemistry (ICC), Immunohistochemistry (Paraffin-embedded Sections) (IHC (p))

## Product Details

Immunogen:	Recombinant protein encompassing a sequence within the center region of human Pancreatic Lipase. The exact sequence is proprietary.
Isotype:	IgG
Cross-Reactivity:	Human
Characteristics:	Rabbit Polyclonal antibody to Pancreatic Lipase (pancreatic lipase) Pancreatic Lipase antibody [N1C1]
Purification:	Purified by antigen-affinity chromatography.

## Target Details

Target:	PNLIP
Alternative Name:	pancreatic lipase ( <a href="#">PNLIP Products</a> )

## Target Details

**Background:** This gene is a member of the lipase gene family. It encodes a carboxyl esterase that hydrolyzes insoluble, emulsified triglycerides, and is essential for the efficient digestion of dietary fats. This gene is expressed specifically in the pancreas.

Cellular Localization: Secreted

**Molecular Weight:** 51 kDa

**Gene ID:** 5406

**UniProt:** [P16233](#)

## Application Details

**Application Notes:** WB: 1:500-1:3000. ICC/IF: 1:100-1:1000. IHC-P: 1:100-1:1000. Optimal dilutions/concentrations should be determined by the researcher. Not tested in other applications.

**Restrictions:** For Research Use only

## Handling

**Format:** Liquid

**Concentration:** 1 mg/mL

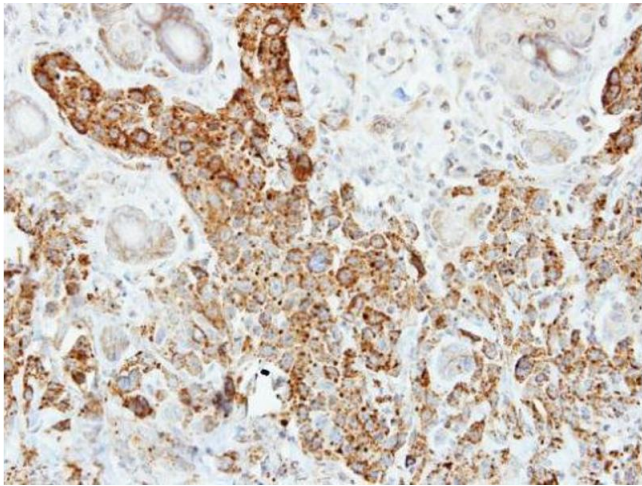
**Buffer:** 1XPBS ( pH 7), 20 % Glycerol, 0.01 % Thimerosal

**Preservative:** Thimerosal (Merthiolate)

**Precaution of Use:** This product contains Thimerosal (Merthiolate): a POISONOUS AND HAZARDOUS SUBSTANCE which should be handled by trained staff only.

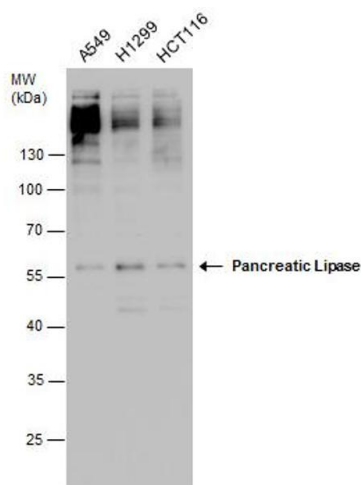
**Storage:** 4 °C, -20 °C

**Storage Comment:** Store as concentrated solution. Centrifuge briefly prior to opening vial. For short-term storage (1-2 weeks), store at 4°C. For long-term storage, aliquot and store at -20°C or below. Avoid multiple freeze-thaw cycles.



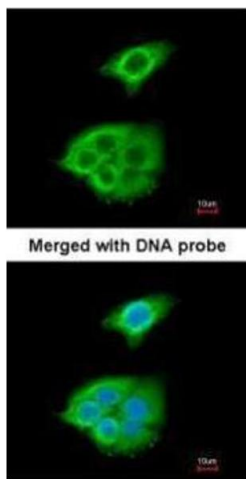
### Immunohistochemistry

**Image 1.** IHC-P Image Immunohistochemical analysis of paraffin-embedded SCM-1 xenograft, using Pancreatic Lipase, antibody at 1:500 dilution.



### Western Blotting

**Image 2.** WB Image Pancreatic Lipase antibody detects Pancreatic Lipase protein by western blot analysis. Various whole cell extracts (30 µg) were separated by 10% SDS-PAGE, and the membrane was blotted with Pancreatic Lipase antibody, diluted at a dilution of 1:1000.



### Immunofluorescence

**Image 3.** ICC/IF Image Immunofluorescence analysis of paraformaldehyde-fixed A549, using Pancreatic Lipase, antibody at 1:200 dilution.

Please check the [product details page](#) for more images. Overall 4 images are available for ABIN2856717.