



Datasheet for ABIN2856720  
**anti-CRLF1 antibody**



[Go to Product page](#)

1 Image

### Overview

Quantity:	100 µL
Target:	CRLF1
Reactivity:	Human
Host:	Rabbit
Clonality:	Polyclonal
Conjugate:	This CRLF1 antibody is un-conjugated
Application:	Western Blotting (WB)

### Product Details

Immunogen:	Recombinant protein encompassing a sequence within the center region of human CRLF1. The exact sequence is proprietary.
Isotype:	IgG
Cross-Reactivity:	Human
Characteristics:	Rabbit polyclonal antibody to Cytokine receptor-like factor 1 (cytokine receptor-like factor 1) CRLF1 antibody [N2C3]
Purification:	Purified by antigen-affinity chromatography.

### Target Details

Target:	CRLF1
Alternative Name:	cytokine receptor like factor 1 ( <a href="#">CRLF1 Products</a> )

## Target Details

---

**Background:** This gene encodes a member of the cytokine type I receptor family. The protein forms a secreted complex with cardiotrophin-like cytokine factor 1 and acts on cells expressing ciliary neurotrophic factor receptors. The complex can promote survival of neuronal cells. Mutations in this gene result in Crisponi syndrome and cold-induced sweating syndrome.

Cellular Localization: Secreted

---

**Molecular Weight:** 46 kDa

---

**Gene ID:** 9244

---

**UniProt:** [O75462](#)

---

## Application Details

---

**Application Notes:** WB: 1:500-1:3000. Optimal dilutions/concentrations should be determined by the researcher.  
Not tested in other applications.

---

**Comment:** Positive Control: HepG2

---

**Restrictions:** For Research Use only

---

## Handling

---

**Format:** Liquid

---

**Concentration:** 1 mg/mL

---

**Buffer:** 0.1M Tris-Glycine ( pH 7), 10 % Glycerol, 0.01 % Thimerosal

---

**Preservative:** Thimerosal (Merthiolate)

---

**Precaution of Use:** This product contains Thimerosal (Merthiolate): a POISONOUS AND HAZARDOUS SUBSTANCE which should be handled by trained staff only.

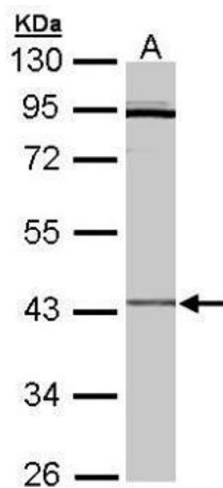
---

**Storage:** 4 °C,-20 °C

---

**Storage Comment:** Store as concentrated solution. Centrifuge briefly prior to opening vial. For short-term storage (1-2 weeks), store at 4°C. For long-term storage, aliquot and store at -20°C or below. Avoid multiple freeze-thaw cycles.

---



### Western Blotting

**Image 1.** WB Image Sample (30 ug of whole cell lysate) A:  
Hep G2 , 10% SDS PAGE antibody diluted at 1:3000