



Datasheet for ABIN2856722

## anti-FTCD antibody

### 3 Images



[Go to Product page](#)

### Overview

|              |  |
|--------------|--|
| Quantity:    | 100 µL   |
| Target:      | FTCD   |
| Reactivity:  | Human  |
| Host:        | Rabbit   |
| Clonality:   | Polyclonal   |
| Conjugate:   | This FTCD antibody is un-conjugated  |
| Application: | Western Blotting (WB), Immunohistochemistry (Paraffin-embedded Sections) (IHC (p)) |

### Product Details

|                   |   |
|-------------------|---|
| Immunogen:        | Recombinant protein encompassing a sequence within the center region of human 58K Golgi protein. The exact sequence is proprietary. |
| Isotype:          | IgG   |
| Cross-Reactivity: | Human, Mouse  |
| Characteristics:  | Rabbit Polyclonal antibody to FTCD (formiminotransferase cyclodeaminase)<br>FTCD antibody [N1N3]                                    |
| Purification:     | Purified by antigen-affinity chromatography.  |

### Target Details

|                   |   |
|-------------------|---|
| Target:           | FTCD  |
| Alternative Name: | formimidoyltransferase cyclodeaminase ( <a href="#">FTCD Products</a> ) |

## Target Details

---

Background: FTCD is a bifunctional enzyme that channels 1-carbon units from formiminoglutamate, a metabolite of the histidine degradation pathway, to the folate pool.[supplied by OMIM]

Cellular Localization: Cytoplasm (By similarity) , Golgi apparatus

---

Molecular Weight: 59 kDa

---

Gene ID: 10841

---

UniProt: [O95954](#)

---

## Application Details

---

Application Notes: WB: 1:500-1:3000. IHC-P: 1:100-1:1000. Optimal dilutions/concentrations should be determined by the researcher. Not tested in other applications.

---

Comment: Positive Control: Mouse liver , HepG2

---

Restrictions: For Research Use only

---

## Handling

---

Format: Liquid

---

Concentration: 0.98 mg/mL

---

Buffer: 0.1M Tris-Glycine ( pH 7), 10 % Glycerol, 0.01 % Thimerosal

---

Preservative: Thimerosal (Merthiolate)

---

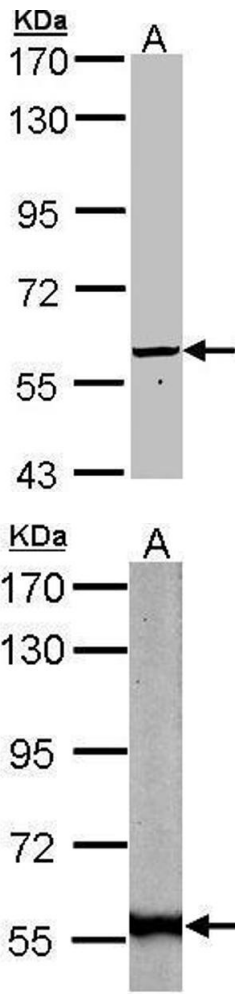
Precaution of Use: This product contains Thimerosal (Merthiolate): a POISONOUS AND HAZARDOUS SUBSTANCE which should be handled by trained staff only.

---

Storage: 4 °C,-20 °C

---

Storage Comment: Store as concentrated solution. Centrifuge briefly prior to opening vial. For short-term storage (1-2 weeks), store at 4°C. For long-term storage, aliquot and store at -20°C or below. Avoid multiple freeze-thaw cycles.

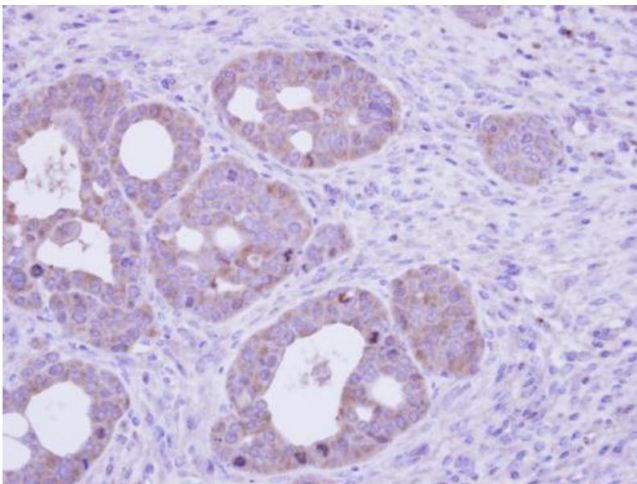


#### Western Blotting

**Image 1.** WB Image Sample (30 ug of whole cell lysate) A: Hep G2 , 7.5% SDS PAGE antibody diluted at 1:1000

#### Western Blotting

**Image 2.** WB Image Sample (50 ug of whole cell lysate) A: mouse liver 7.5% SDS PAGE antibody diluted at 1:1000



#### Immunohistochemistry

**Image 3.** IHC-P Image Immunohistochemical analysis of paraffin-embedded NCIN87 xenograft, using FTCD, antibody at 1:100 dilution.