

Datasheet for ABIN2856727

anti-NPR3 antibody**3** Images[Go to Product page](#)

Overview

Quantity:	100 µL
Target:	NPR3
Reactivity:	Human
Host:	Rabbit
Clonality:	Polyclonal
Conjugate:	This NPR3 antibody is un-conjugated
Application:	Western Blotting (WB), Immunofluorescence (IF), Immunohistochemistry (Paraffin-embedded Sections) (IHC (p)), Immunocytochemistry (ICC)

Product Details

Immunogen:	Recombinant protein encompassing a sequence within the center region of human NPR-C. The exact sequence is proprietary.
Isotype:	IgG
Cross-Reactivity:	Chicken, Human, Mouse, Rabbit, Rat
Characteristics:	Rabbit polyclonal antibody to NPR-C (natriuretic peptide receptor C/guanylate cyclase C (atrionatriuretic peptide receptor C)) NPR-C antibody [N3C3]
Purification:	Purified by antigen-affinity chromatography.

Target Details

Target:	NPR3
---------	------

Target Details

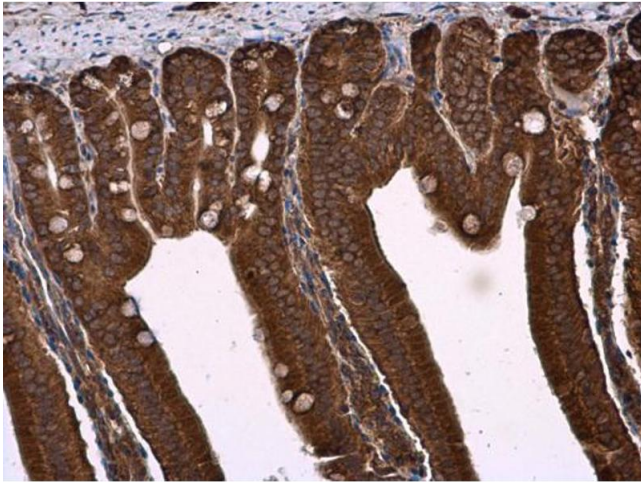
Alternative Name:	natriuretic peptide receptor 3 (NPR3 Products)
Background:	<p>The family of natriuretic peptides (see MIM 108780) elicit a number of vascular, renal, and endocrine effects that are important in the maintenance of blood pressure and extracellular fluid volume. These effects are mediated by specific binding of the peptides to cell surface receptors in the vasculature, kidney, adrenal, and brain.[supplied by OMIM]</p> <p>Cellular Localization: Membrane</p>
Molecular Weight:	60 kDa
Gene ID:	4883
UniProt:	P17342
Pathways:	cAMP Metabolic Process

Application Details

Application Notes:	ICC/IF: 1:100-1:1000. IHC-P: 1:100-1:1000. Optimal dilutions/concentrations should be determined by the researcher. Not tested in other applications.
Restrictions:	For Research Use only

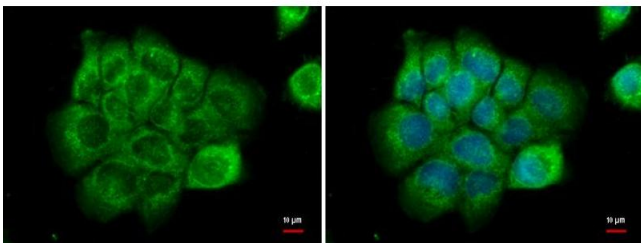
Handling

Format:	Liquid
Concentration:	1.81 mg/mL
Buffer:	1XPBS pH 7, 20 % Glycerol, 0.025 % ProClin 300
Preservative:	ProClin
Precaution of Use:	This product contains ProClin: a POISONOUS AND HAZARDOUS SUBSTANCE which should be handled by trained staff only.
Storage:	4 °C, -20 °C
Storage Comment:	Store as concentrated solution. Centrifuge briefly prior to opening vial. For short-term storage (1-2 weeks), store at 4°C. For long-term storage, aliquot and store at -20°C or below. Avoid multiple freeze-thaw cycles.



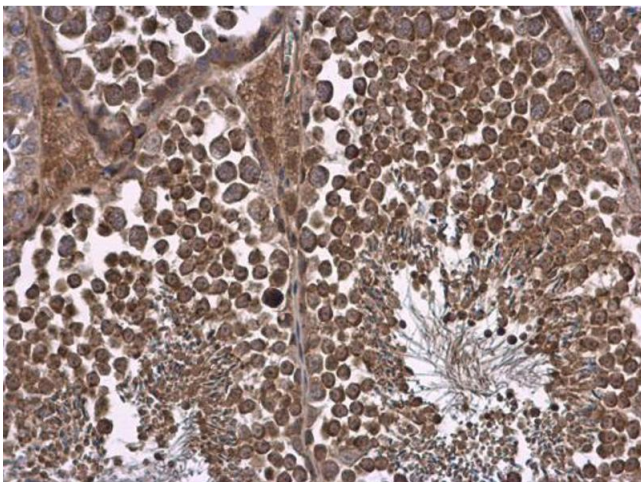
Immunohistochemistry

Image 1. IHC-P Image NPR-C antibody [N3C3] detects NPR-C protein at cell membrane and cytoplasm in mouse duodenum by immunohistochemical analysis. Sample: Paraffin-embedded mouse duodenum. NPR-C antibody [N3C3] , diluted at 1:500.



Immunofluorescence

Image 2. ICC/IF Image NPR-C antibody [N3C3] detects NPR-C protein at cytoplasm by immunofluorescent analysis. Sample: A431 cells were fixed in ice-cold MeOH for 5 min. Green: NPR-C protein stained by NPR-C antibody [N3C3] , diluted at 1:500. Blue: Hoechst 33342 staining.



Immunohistochemistry

Image 3. IHC-P Image NPR-C antibody [N3C3] detects NPR-C protein at cell membrane and cytoplasm in mouse testis by immunohistochemical analysis. Sample: Paraffin-embedded mouse testis. NPR-C antibody [N3C3] , diluted at 1:500.