

Datasheet for ABIN2856728

**anti-MLYCD antibody****6** Images[Go to Product page](#)

## Overview

Quantity:	100 µL
Target:	MLYCD
Reactivity:	Human
Host:	Rabbit
Clonality:	Polyclonal
Conjugate:	This MLYCD antibody is un-conjugated
Application:	Western Blotting (WB), Immunofluorescence (IF), Immunocytochemistry (ICC), Immunohistochemistry (Paraffin-embedded Sections) (IHC (p))

## Product Details

Immunogen:	Recombinant protein encompassing a sequence within the center region of human MCD. The exact sequence is proprietary.
Isotype:	IgG
Cross-Reactivity:	Human, Mouse
Characteristics:	Rabbit Polyclonal antibody to MCD (malonyl-CoA decarboxylase) MCD antibody [N2C1], Internal
Purification:	Purified by antigen-affinity chromatography.

## Target Details

Target:	MLYCD
Alternative Name:	malonyl-CoA decarboxylase ( <a href="#">MLYCD Products</a> )

## Target Details

**Background:** The product of this gene catalyzes the breakdown of malonyl-CoA to acetyl-CoA and carbon dioxide. Malonyl-CoA is an intermediate in fatty acid biosynthesis, and also inhibits the transport of fatty acyl CoAs into mitochondria. Consequently, the encoded protein acts to increase the rate of fatty acid oxidation. It is found in mitochondria, peroxisomes, and the cytoplasm. Mutations in this gene result in malonyl-CoA decarboxylase deficiency.

Cellular Localization: Mitochondrion , Cytoplasm , Peroxisome

**Molecular Weight:** 55 kDa

**Gene ID:** 23417

**UniProt:** [O95822](#)

**Pathways:** [Regulation of Carbohydrate Metabolic Process](#)

## Application Details

**Application Notes:** WB: 1:500-1:3000. ICC/IF: 1:100-1:1000. IHC-P: 1:100-1:1000. Optimal dilutions/concentrations should be determined by the researcher. Not tested in other applications.

**Comment:** Positive Control: C8D30

**Restrictions:** For Research Use only

## Handling

**Format:** Liquid

**Concentration:** 1 mg/mL

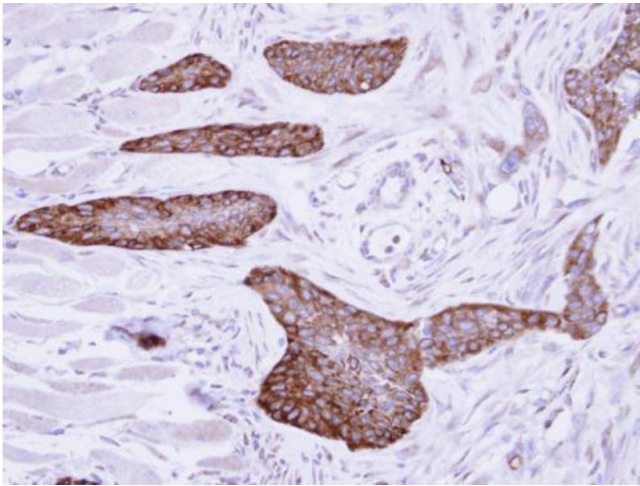
**Buffer:** 1XPBS ( pH 7), 20 % Glycerol, 0.01 % Thimerosal

**Preservative:** Thimerosal (Merthiolate)

**Precaution of Use:** This product contains Thimerosal (Merthiolate): a POISONOUS AND HAZARDOUS SUBSTANCE which should be handled by trained staff only.

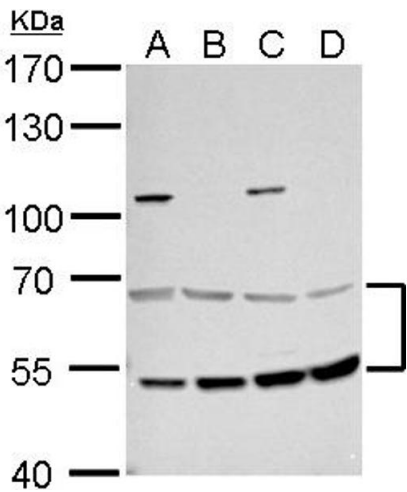
**Storage:** 4 °C,-20 °C

**Storage Comment:** Store as concentrated solution. Centrifuge briefly prior to opening vial. For short-term storage (1-2 weeks), store at 4°C. For long-term storage, aliquot and store at -20°C or below. Avoid multiple freeze-thaw cycles.



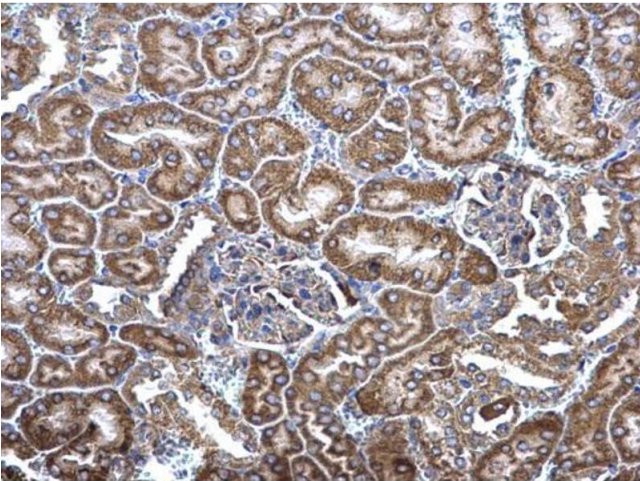
**Immunohistochemistry**

**Image 1.** IHC-P Image Immunohistochemical analysis of paraffin-embedded H661 xenograft, using MCD, antibody at 1:500 dilution.



**Western Blotting**

**Image 2.** WB Image MCD antibody detects MCD protein by western blot analysis. A. 30 µg 293T whole cell lysate/extract B. 30 µg A431 whole cell lysate/extract C. 30 µg HeLa whole cell lysate/extract D. 30 µg HepG2 whole cell lysate/extract 7.5 % SDS-PAGE MCD antibody , dilution: 1:500



**Immunohistochemistry**

**Image 3.** IHC-P Image MCD antibody [N2C1], Internal detects MCD protein at cytosol on mouse kidney by immunohistochemical analysis. Sample: Paraffin-embedded mouse kidney. MCD antibody [N2C1], Internal , dilution: 1:500.

Please check the [product details page](#) for more images. Overall 6 images are available for ABIN2856728.