

Datasheet for ABIN2856732

anti-alpha 2 Antiplasmin antibody (Center)**4** Images[Go to Product page](#)

Overview

Quantity:	100 µL
Target:	alpha 2 Antiplasmin (SERPINF2)
Binding Specificity:	Center
Reactivity:	Human, Mouse
Host:	Rabbit
Clonality:	Polyclonal
Application:	Western Blotting (WB), Immunocytochemistry (ICC), Immunofluorescence (IF), Immunohistochemistry (Paraffin-embedded Sections) (IHC (p))

Product Details

Immunogen:	Recombinant protein encompassing a sequence within the center region of human alpha 2 Antiplasmin. The exact sequence is proprietary.
Isotype:	IgG
Cross-Reactivity:	Rabbit, Cow (Bovine)
Cross-Reactivity (Details):	Rabbit (86 %), Bovine (83 %)
Characteristics:	Rabbit Polyclonal antibody to alpha 2 Antiplasmin (serpin peptidase inhibitor, clade F (alpha-2 antiplasmin, pigment epithelium derived factor), member 2) alpha 2 Antiplasmin antibody [N3C3]
Purification:	Purified by antigen-affinity chromatography.

Target Details

Target:	alpha 2 Antiplasmin (SERPINF2)
Alternative Name:	alpha 2 Antiplasmin (SERPINF2 Products)
Background:	<p>This gene encodes a member of the serpin family of serine protease inhibitors. The protein is a major inhibitor of plasmin, which degrades fibrin and various other proteins. Consequently, the proper function of this gene has a major role in regulating the blood clotting pathway.</p> <p>Mutations in this gene result in alpha-2-plasmin inhibitor deficiency, which is characterized by severe hemorrhagic diathesis. Multiple transcript variants encoding different isoforms have been found for this gene.</p> <p>Cellular Localization: Secreted</p>
Molecular Weight:	55 kDa
Gene ID:	5345
Pathways:	Regulation of Systemic Arterial Blood Pressure by Hormones

Application Details

Application Notes:	<p>Suggested dilution Reference ICC/IF 1:100-1:1000* IHC (Formalin-fixed paraffin-embedded sections) 1:100-1:1000* Western blot 1:500-1:3000* Not tested in other applications. *Optimal dilutions/concentrations should be determined by the researcher.Suggested dilutionReferenceICC/IF1:100-1:1000* IHC (Formalin-fixed paraffin-embedded sections)1:100-1:1000* Western blot1:500-1:3000*</p>
Comment:	Positive Control: 293T , A431 , H1299 , HeLa , HepG2 , Molt-4 , Raji , mouse liver
Restrictions:	For Research Use only

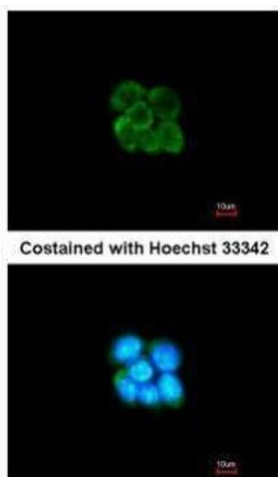
Handling

Format:	Liquid
Concentration:	1 mg/mL
Buffer:	0.1M Tris, 0.1M Glycine, 10 % Glycerol (pH 7). 0.01 % Thimerosal was added as a preservative.
Preservative:	Thimerosal (Merthiolate)
Precaution of Use:	This product contains Thimerosal (Merthiolate): a POISONOUS AND HAZARDOUS SUBSTANCE which should be handled by trained staff only.
Storage:	-20 °C

Handling

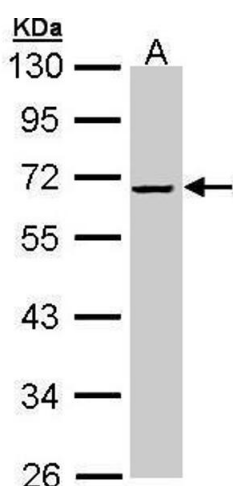
Storage Comment: Keep as concentrated solution. Aliquot and store at -20°C or below. Avoid multiple freeze-thaw cycles.

Validation report #101762 for Western Blotting (WB)



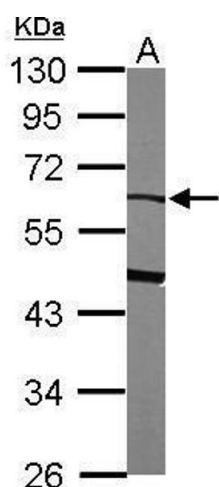
Immunofluorescence

Image 1. ICC/IF Image Immunofluorescence analysis of methanol-fixed A431, using SERPINF2, antibody at 1:200 dilution.



Western Blotting

Image 2. WB Image Sample (30 ug of whole cell lysate) A: Hela 10% SDS PAGE antibody diluted at 1:1000



Western Blotting

Image 3. WB Image Sample (50 ug of whole cell lysate) A: mouse liver 10% SDS PAGE antibody diluted at 1:1000

Please check the [product details page](#) for more images. Overall 4 images are available for ABIN2856732.