

Datasheet for ABIN2856733

anti-LARS2 antibody

4 Images

[Go to Product page](#)

Overview

Quantity:	100 µL
Target:	LARS2
Reactivity:	Human
Host:	Rabbit
Clonality:	Polyclonal
Conjugate:	This LARS2 antibody is un-conjugated
Application:	Western Blotting (WB), Immunocytochemistry (ICC), Immunofluorescence (IF), Immunohistochemistry (Paraffin-embedded Sections) (IHC (p))

Product Details

Immunogen:	Recombinant protein encompassing a sequence within the center region of human LARS2. The exact sequence is proprietary.
Isotype:	IgG
Cross-Reactivity:	Human
Characteristics:	Rabbit Polyclonal antibody to LARS2 (leucyl-tRNA synthetase 2, mitochondrial) LARS2 antibody [N2C1], Internal
Purification:	Purified by antigen-affinity chromatography.

Target Details

Target:	LARS2
Alternative Name:	leucyl-tRNA synthetase 2, mitochondrial (LARS2 Products)

Target Details

Background: This gene encodes a class 1 aminoacyl-tRNA synthetase, mitochondrial leucyl-tRNA synthetase. Each of the twenty aminoacyl-tRNA synthetases catalyzes the aminoacylation of a specific tRNA or tRNA isoaccepting family with the cognate amino acid.

Cellular Localization: Mitochondrion matrix

Molecular Weight: 102 kDa

Gene ID: 23395

UniProt: [Q15031](#)

Application Details

Application Notes: WB: 1:500-1:3000. ICC/IF: 1:100-1:1000. IHC-P: 1:100-1:1000. Optimal dilutions/concentrations should be determined by the researcher. Not tested in other applications.

Restrictions: For Research Use only

Handling

Format: Liquid

Concentration: 1 mg/mL

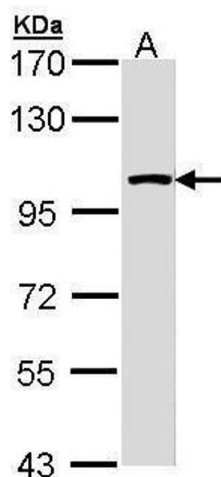
Buffer: 0.1M Tris-Glycine (pH 7), 10 % Glycerol, 0.01 % Thimerosal

Preservative: Thimerosal (Merthiolate)

Precaution of Use: This product contains Thimerosal (Merthiolate): a POISONOUS AND HAZARDOUS SUBSTANCE which should be handled by trained staff only.

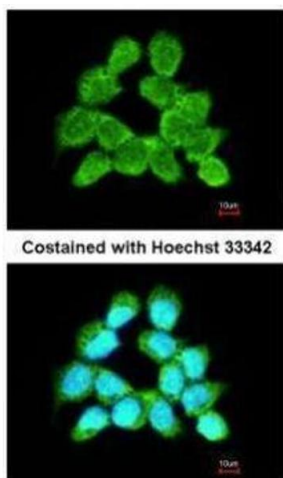
Storage: 4 °C, -20 °C

Storage Comment: Store as concentrated solution. Centrifuge briefly prior to opening vial. For short-term storage (1-2 weeks), store at 4°C. For long-term storage, aliquot and store at -20°C or below. Avoid multiple freeze-thaw cycles.



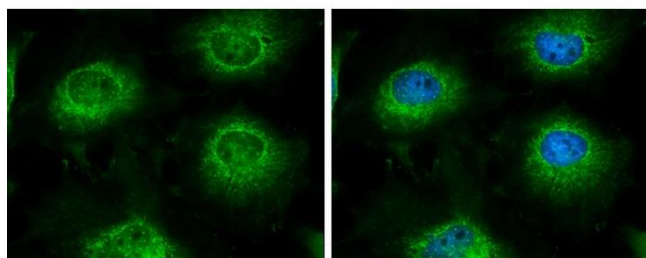
Western Blotting

Image 1. WB Image Sample (30 ug of whole cell lysate) A: Molt-4 , 7.5% SDS PAGE antibody diluted at 1:3000



Immunofluorescence

Image 2. ICC/IF Image Immunofluorescence analysis of methanol-fixed A431, using LARS2, antibody at 1:200 dilution.



Immunofluorescence

Image 3. ICC/IF Image LARS2 antibody [N2C1], Internal detects LARS2 protein at mitochondria by immunofluorescent analysis. Sample: HeLa cells were fixed in 4% paraformaldehyde at RT for 15 min. Green: LARS2 protein stained by LARS2 antibody [N2C1], Internal , diluted at 1:500. Blue: Hoechst 33342 staining.

Please check the [product details page](#) for more images. Overall 4 images are available for ABIN2856733.