



Datasheet for ABIN2856734
anti-RBMY1A1 antibody



[Go to Product page](#)

2 Images

Overview

Quantity:	100 µL
Target:	RBMY1A1
Reactivity:	Human
Host:	Rabbit
Clonality:	Polyclonal
Conjugate:	This RBMY1A1 antibody is un-conjugated
Application:	Western Blotting (WB), Immunohistochemistry (Paraffin-embedded Sections) (IHC (p))

Product Details

Immunogen:	Recombinant protein encompassing a sequence within the center region of human RBMY1A1. The exact sequence is proprietary.
Isotype:	IgG
Cross-Reactivity:	Human
Characteristics:	Rabbit Polyclonal antibody to RBMY1A1 (RNA binding motif protein, Y-linked, family 1, member A1) RBMY1A1 antibody
Purification:	Purified by antigen-affinity chromatography.

Target Details

Target:	RBMY1A1
Alternative Name:	RNA binding motif protein, Y-linked, family 1, member A1 (RBMY1A1 Products)

Target Details

Background: This gene encodes a protein containing an RNA-binding motif in the N-terminus and four SRGY (serine, arginine, glycine, tyrosine) boxes in the C-terminus. Multiple copies of this gene are found in the AZFb azoospermia factor region of chromosome Y and the encoded protein is thought to be involved in spermatogenesis. Most copies of this locus are pseudogenes, although six highly similar copies have full-length ORFs and are considered functional. Four functional copies of this gene are found within inverted repeat IR2, two functional copies of this gene are found in palindrome P3, along with two copies of PTPN13-like, Y-linked.

Cellular Localization: Nucleus

Molecular Weight: 56 kDa

Gene ID: 5940

UniProt: [P0DJJ3](#)

Application Details

Application Notes: WB: 1:500-1:3000. IHC-P: 1:100-1:1000. Optimal dilutions/concentrations should be determined by the researcher. Not tested in other applications.

Comment: Positive Control: NT2D1 , PC-3

Restrictions: For Research Use only

Handling

Format: Liquid

Concentration: 1 mg/mL

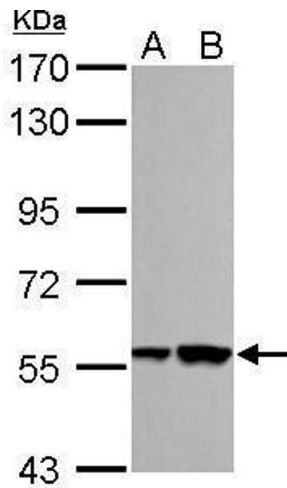
Buffer: 0.1M Tris-Glycine (pH 7), 10 % Glycerol, 0.01 % Thimerosal

Preservative: Thimerosal (Merthiolate)

Precaution of Use: This product contains Thimerosal (Merthiolate): a POISONOUS AND HAZARDOUS SUBSTANCE which should be handled by trained staff only.

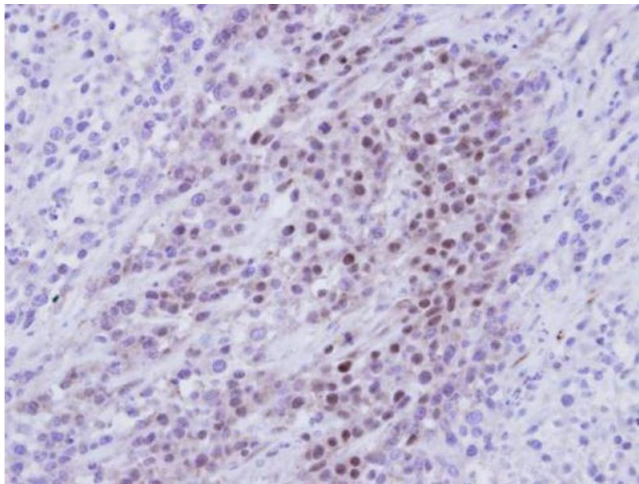
Storage: 4 °C,-20 °C

Storage Comment: Store as concentrated solution. Centrifuge briefly prior to opening vial. For short-term storage (1-2 weeks), store at 4°C. For long-term storage, aliquot and store at -20°C or below. Avoid multiple freeze-thaw cycles.



Western Blotting

Image 1. WB Image RBMY1A1 antibody detects RBMY1A1 protein by Western blot analysis. A. 30 µg NT2D1 whole cell lysate/extract B. 30 µg PC-3 whole cell lysate/extract 7.5 % SDS-PAGE RBMY1A1 antibody , dilution: 1:1000



Immunohistochemistry

Image 2. IHC-P Image Immunohistochemical analysis of paraffin-embedded SAS Xenograft , using RBMY1A1, antibody at 1:100 dilution.