

Datasheet for ABIN2856736  
**anti-DIP2B antibody (C-Term)**[Go to Product page](#)

## 3 Images

## Overview

Quantity:	100 µL
Target:	DIP2B
Binding Specificity:	C-Term
Reactivity:	Human
Host:	Rabbit
Clonality:	Polyclonal
Conjugate:	This DIP2B antibody is un-conjugated
Application:	Western Blotting (WB), Immunocytochemistry (ICC), Immunofluorescence (IF)

## Product Details

Immunogen:	Recombinant protein encompassing a sequence within the C-terminus region of human DIP2B. The exact sequence is proprietary.
Isotype:	IgG
Cross-Reactivity:	Human, Mouse
Characteristics:	Rabbit Polyclonal antibody to DIP2B (DIP2 disco-interacting protein 2 homolog B (Drosophila)) DIP2B antibody [C2C3-2], C-term
Purification:	Purified by antigen-affinity chromatography.

## Target Details

Target:	DIP2B
---------	-------

## Target Details

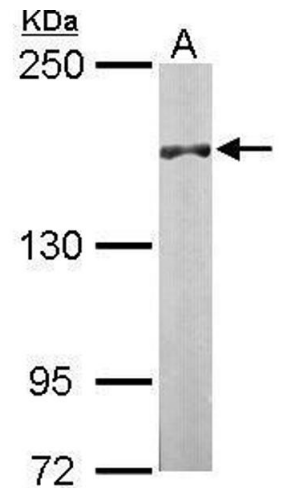
Alternative Name:	disco interacting protein 2 homolog B ( <a href="#">DIP2B Products</a> )
Molecular Weight:	171 kDa
Gene ID:	57609
UniProt:	<a href="#">Q9P265</a>

## Application Details

Application Notes:	WB: 1:500-1:3000. ICC/IF: 1:100-1:1000. Optimal dilutions/concentrations should be determined by the researcher. Not tested in other applications.
Comment:	Positive Control: Mouse brain , HeLa
Restrictions:	For Research Use only

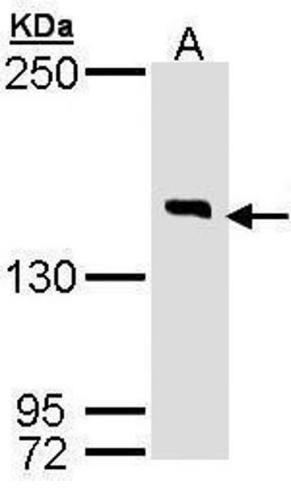
## Handling

Format:	Liquid
Concentration:	1 mg/mL
Buffer:	0.1M Tris-Glycine ( pH 7), 10 % Glycerol, 0.01 % Thimerosal
Preservative:	Thimerosal (Merthiolate)
Precaution of Use:	This product contains Thimerosal (Merthiolate): a POISONOUS AND HAZARDOUS SUBSTANCE which should be handled by trained staff only.
Storage:	4 °C,-20 °C
Storage Comment:	Store as concentrated solution. Centrifuge briefly prior to opening vial. For short-term storage (1-2 weeks), store at 4°C. For long-term storage, aliquot and store at -20°C or below. Avoid multiple freeze-thaw cycles.



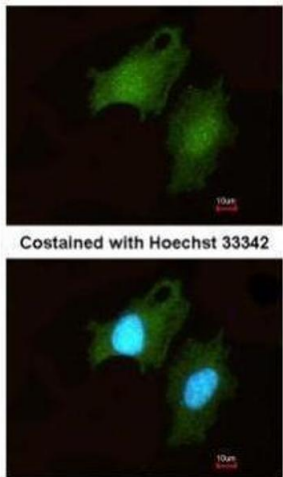
Western Blotting

**Image 1.** WB Image Sample (50 ug of whole cell lysate) A:  
Mouse brain 5% SDS PAGE antibody diluted at 1:1000



Western Blotting

**Image 2.** WB Image Sample (30 ug of whole cell lysate) A:  
Hela 7.5% SDS PAGE antibody diluted at 1:1000



Immunofluorescence

**Image 3.** ICC/IF Image Immunofluorescence analysis of  
methanol-fixed HeLa, using DIP2B, antibody at 1:200  
dilution.