



[Go to Product page](#)

Datasheet for ABIN2856741

anti-PIGR antibody

3 Images

Overview

Quantity:	100 µL
Target:	PIGR
Reactivity:	Human
Host:	Rabbit
Clonality:	Polyclonal
Conjugate:	This PIGR antibody is un-conjugated
Application:	Western Blotting (WB), Immunocytochemistry (ICC), Immunohistochemistry (Paraffin-embedded Sections) (IHC (p)), Immunofluorescence (IF)

Product Details

Immunogen:	Recombinant protein encompassing a sequence within the center region of human PIGR. The exact sequence is proprietary.
Isotype:	IgG
Cross-Reactivity:	Human
Characteristics:	Rabbit polyclonal antibody to PIGR (polymeric immunoglobulin receptor) PIGR antibody [N2C1], Internal
Purification:	Purified by antigen-affinity chromatography.

Target Details

Target:	PIGR
Alternative Name:	polymeric immunoglobulin receptor (PIGR Products)

Target Details

Background: The poly-Ig receptor is expressed on several glandular epithelia including those of liver and breast. It mediates transcellular transport of polymeric immunoglobulin molecules. It is a member of the immunoglobulin superfamily (Hood et al., 1985 [PubMed 3917857]). The receptor has 5 units with homology to the variable (V) units of immunoglobulins and a transmembrane region, which also has some homology to certain immunoglobulin variable regions.[supplied by OMIM]

Cellular Localization: Cell membrane, Single-pass type I membrane protein , Secretory component: Secreted

Molecular Weight: 83 kDa

Gene ID: 5284

UniProt: [P01833](#)

Application Details

Application Notes: WB: 1:1000-1:10000. ICC/IF: 1:100-1:1000. IHC-P: 1:100-1:1000. Optimal dilutions/concentrations should be determined by the researcher. Not tested in other applications.

Restrictions: For Research Use only

Handling

Format: Liquid

Concentration: 0.39 mg/mL

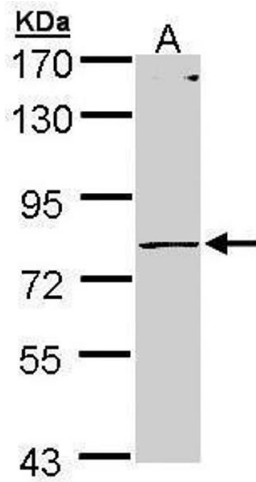
Buffer: 1XPBS (pH 7), 1 % BSA, 20 % Glycerol, 0.025 % ProClin 300

Preservative: ProClin

Precaution of Use: This product contains ProClin: a POISONOUS AND HAZARDOUS SUBSTANCE which should be handled by trained staff only.

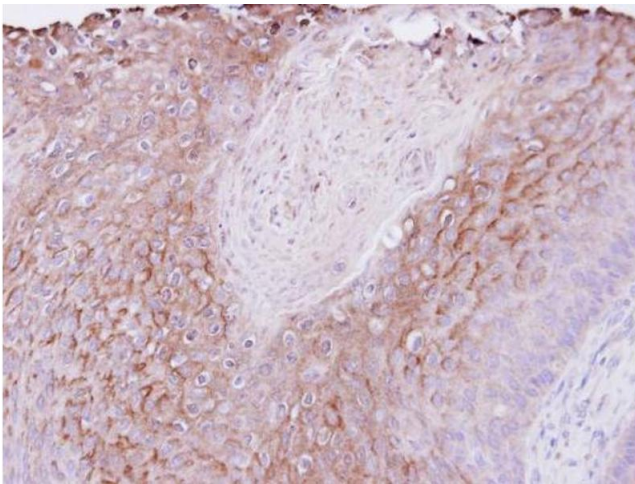
Storage: 4 °C,-20 °C

Storage Comment: Store as concentrated solution. Centrifuge briefly prior to opening vial. For short-term storage (1-2 weeks), store at 4°C. For long-term storage, aliquot and store at -20°C or below. Avoid multiple freeze-thaw cycles.



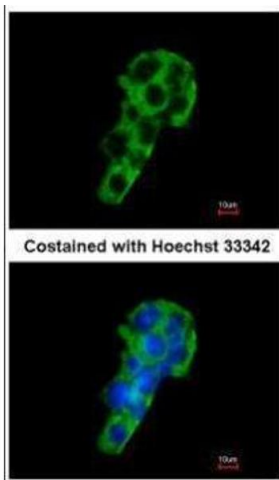
Western Blotting

Image 1. WB Image Sample (30 µg of whole cell lysate) A: Molt-4, 7.5% SDS PAGE antibody diluted at 1:1000



Immunohistochemistry

Image 2. IHC-P Image Immunohistochemical analysis of paraffin-embedded Cal27 xenograft, using PIGR, antibody at 1:500 dilution.



Immunofluorescence

Image 3. ICC/IF Image Immunofluorescence analysis of methanol-fixed HepG2, using PIGR, antibody at 1:200 dilution.