

Datasheet for ABIN2856745  
**anti-SERPINA10 antibody (Center)**[Go to Product page](#)

## 1 Image

## Overview

Quantity:	100 µL
Target:	SERPINA10
Binding Specificity:	Center
Reactivity:	Human
Host:	Rabbit
Clonality:	Polyclonal
Conjugate:	This SERPINA10 antibody is un-conjugated
Application:	Western Blotting (WB)

## Product Details

Immunogen:	Recombinant protein encompassing a sequence within the center region of human SERPINA10. The exact sequence is proprietary.
Isotype:	IgG
Cross-Reactivity:	Mouse (Murine), Rat (Rattus)
Cross-Reactivity (Details):	Mouse (82 %), Rat (82 %)
Characteristics:	Rabbit polyclonal antibody to SERPINA10 (serpin peptidase inhibitor, clade A (alpha-1 antiproteinase, antitrypsin), member 10) SERPINA10 antibody [N3C3]
Purification:	Purified by antigen-affinity chromatography.



## Target Details

Target:	SERPINA10
Alternative Name:	SERPINA10 ( <a href="#">SERPINA10 Products</a> )
Background:	<p>The protein encoded by this gene belongs to the serpin family. It is predominantly expressed in the liver and secreted in plasma. It inhibits the activity of coagulation factors Xa and XIa in the presence of protein Z, calcium and phospholipid. Mutations in this gene are associated with venous thrombosis. Alternatively spliced transcript variants have been found for this gene.</p> <p>Cellular Localization: Secreted</p>
Molecular Weight:	51 kDa
Gene ID:	51156

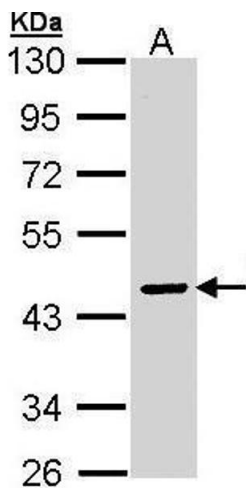
## Application Details

Application Notes:	<p>Suggested dilution Reference Western blot 1:500-1:3000* Not tested in other applications.</p> <p>*Optimal dilutions/concentrations should be determined by the researcher.Suggested dilutionReferenceWestern blot1:500-1:3000*</p>
Comment:	Positive Control: Molt-4
Restrictions:	For Research Use only

## Handling

Format:	Liquid
Concentration:	1 mg/mL
Buffer:	0.1M Tris, 0.1M Glycine, 10 % Glycerol ( pH 7). 0.01 % Thimerosal was added as a preservative.
Preservative:	Thimerosal (Merthiolate)
Precaution of Use:	This product contains Thimerosal (Merthiolate): a POISONOUS AND HAZARDOUS SUBSTANCE which should be handled by trained staff only.
Storage:	-20 °C
Storage Comment:	Keep as concentrated solution. Aliquot and store at -20°C or below. Avoid multiple freeze-thaw cycles.





Western Blotting

**Image 1.** WB Image Sample (30 ug of whole cell lysate) A:  
Molt-4 , 10% SDS PAGE antibody diluted at 1:3000