

Datasheet for ABIN2856746
anti-MX1 antibody (Internal Region)

6 Images

2 Publications

[Go to Product page](#)

Overview

| | |
|----------------------|---|
| Quantity: | 100 µL |
| Target: | MX1 |
| Binding Specificity: | Internal Region |
| Reactivity: | Human |
| Host: | Rabbit |
| Clonality: | Polyclonal |
| Conjugate: | This MX1 antibody is un-conjugated |
| Application: | Western Blotting (WB), Immunocytochemistry (ICC), Immunofluorescence (IF), Immunohistochemistry (Paraffin-embedded Sections) (IHC (p)) |

Product Details

| | |
|------------------|---|
| Immunogen: | Recombinant protein encompassing a sequence within the center region of human MX1. The exact sequence is proprietary. |
| Isotype: | IgG |
| Characteristics: | Rabbit Polyclonal antibody to MX1 (myxovirus (influenza virus) resistance 1, interferon-inducible protein p78 (mouse)) MX1 antibody [N2C2], Internal |
| Purification: | Purified by antigen-affinity chromatography. |

Target Details

| | |
|---------|-----|
| Target: | MX1 |
|---------|-----|

Target Details

| | |
|-------------------|---|
| Alternative Name: | MX1 (MX1 Products) |
| Background: | <p>In mouse, the interferon-inducible Mx protein is responsible for a specific antiviral state against influenza virus infection. The protein encoded by this gene is similar to the mouse protein as determined by its antigenic relatedness, induction conditions, physicochemical properties, and amino acid analysis. This cytoplasmic protein is a member of both the dynamin family and the family of large GTPases. Two transcript variants encoding the same protein have been found for this gene.</p> <p>Cellular Localization: Cytoplasm</p> |
| Molecular Weight: | 76 kDa |
| Gene ID: | 4599 |

Application Details

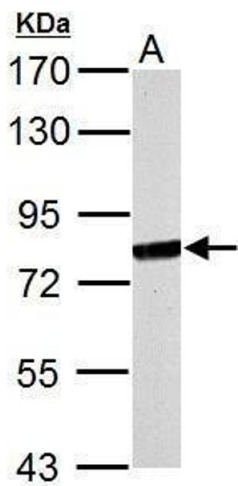
| | |
|--------------------|--|
| Application Notes: | <p>Suggested dilution Reference ICC/IF 1:100-1:1000* IHC (Formalin-fixed paraffin-embedded sections) 1:100-1:1000* Western blot 1:500-1:3000* Not tested in other applications. *Optimal dilutions/concentrations should be determined by the researcher.Suggested dilutionReferenceICC/IF1:100-1:1000* IHC (Formalin-fixed paraffin-embedded sections)1:100-1:1000* Western blot1:500-1:3000*</p> |
| Comment: | Positive Control: NCI-H929 , human MX1-transfected 293T cells |
| Restrictions: | For Research Use only |

Handling

| | |
|--------------------|--|
| Format: | Liquid |
| Concentration: | 1 mg/mL |
| Buffer: | 0.1M Tris, 0.1M Glycine, 10 % Glycerol (pH 7). 0.01 % Thimerosal was added as a preservative. |
| Preservative: | Thimerosal (Merthiolate) |
| Precaution of Use: | This product contains Thimerosal (Merthiolate): a POISONOUS AND HAZARDOUS SUBSTANCE which should be handled by trained staff only. |
| Storage: | -20 °C |
| Storage Comment: | Keep as concentrated solution. Aliquot and store at -20°C or below. Avoid multiple freeze-thaw cycles. |

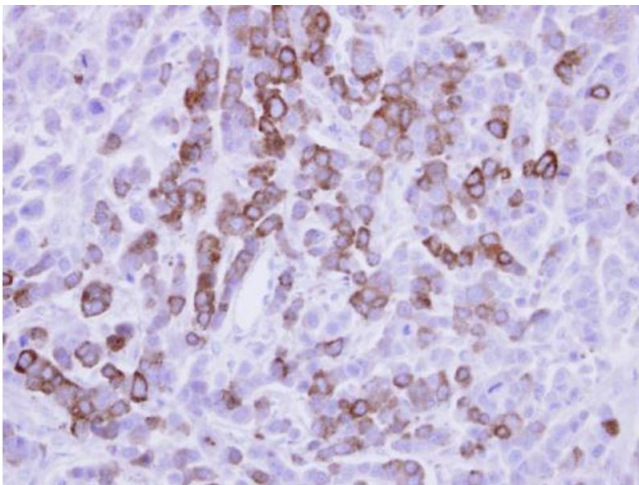
Product cited in: Whiting, Ogier, Forbush, Bucko, Gopalan, Seternes, Langeberg, Scott: "AKAP220 manages apical actin networks that coordinate aquaporin-2 location and renal water reabsorption." in: **Proceedings of the National Academy of Sciences of the United States of America**, Vol. 113, Issue 30, pp. E4328-37, (2016) ([PubMed](#)).

Validation report #101404 for ELISA (ELISA)



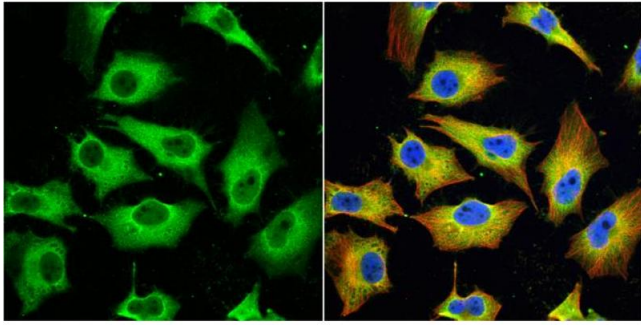
Western Blotting

Image 1. WB Image MX1 antibody [N2C2], Internal detects MX1 protein by Western blot analysis. A. 30 µg NCI-H929 whole cell lysate/extract 7.5% SDS-PAGE MX1 antibody [N2C2], Internal , dilution: 1:1000



Immunohistochemistry

Image 2. IHC-P Image Immunohistochemical analysis of paraffin-embedded MDA-MB-468 xenograft, using MX1, antibody at 1:500 dilution.



Immunofluorescence

Image 3. ICC/IF Image MX1 antibody [N2C2], Internal detects MX1 protein at cytoplasm by immunofluorescent analysis. Sample: HeLa cells were fixed in 4% paraformaldehyde at RT for 15 min. Green: MX1 protein stained by MX1 antibody [N2C2], Internal, diluted at 1:200. Red: alpha Tubulin, a cytoskeleton marker, stained by alpha Tubulin antibody [GT114], diluted at 1:1000. Blue: Hoechst 33342 staining.

Please check the [product details page](#) for more images. Overall 6 images are available for ABIN2856746.