

Datasheet for ABIN2856747

anti-GLDC antibody**2** Images[Go to Product page](#)

Overview

Quantity:	100 µL
Target:	GLDC
Reactivity:	Human
Host:	Rabbit
Clonality:	Polyclonal
Conjugate:	This GLDC antibody is un-conjugated
Application:	Western Blotting (WB), Immunoprecipitation (IP), Immunocytochemistry (ICC), Immunohistochemistry (Paraffin-embedded Sections) (IHC (p)), Immunofluorescence (IF)

Product Details

Immunogen:	Recombinant protein encompassing a sequence within the center region of human Glycine dehydrogenase. The exact sequence is proprietary.
Isotype:	IgG
Cross-Reactivity:	Human, Mouse, Rat
Characteristics:	Rabbit Polyclonal antibody to Glycine dehydrogenase (glycine dehydrogenase (decarboxylating)) Glycine dehydrogenase antibody [N3C2-2], Internal
Purification:	Purified by antigen-affinity chromatography.

Target Details

Target:	GLDC
---------	------

Target Details

Alternative Name:	glycine decarboxylase (GLDC Products)
Background:	<p>The enzyme system for cleavage of glycine (glycine cleavage system, GCS, EC 2.1.2.10), which is confined to the mitochondria, is composed of 4 protein components: P protein (a pyridoxal phosphate-dependent glycine decarboxylase), H protein (a lipoic acid-containing protein), T protein (a tetrahydrofolate-requiring enzyme), and L protein (a lipoamide dehydrogenase). Glycine encephalopathy (GCE, MIM 605899) may be due to a defect in any one of these enzymes, see MIM 238310, MIM 238330, and MIM 238331.[supplied by OMIM]</p> <p>Cellular Localization: Mitochondrion</p>
Molecular Weight:	113 kDa
Gene ID:	2731
UniProt:	P23378

Application Details

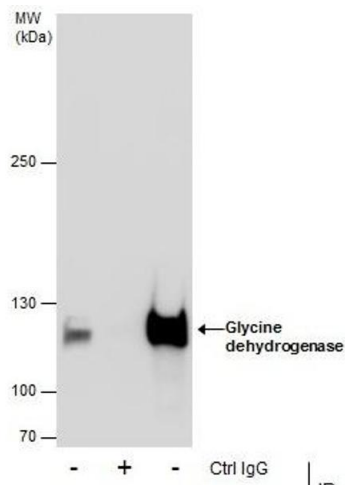
Application Notes:	WB: 1:500-1:3000. ICC/IF: 1:100-1:1000. IHC-P: 1:100-1:1000. IP: 1:100-1:500. Optimal dilutions/concentrations should be determined by the researcher. Not tested in other applications.
Comment:	Positive Control: HepG2 Validation: Comparison
Restrictions:	For Research Use only

Handling

Format:	Liquid
Concentration:	0.46 mg/mL
Buffer:	1XPBS (pH 7), 1 % BSA, 20 % Glycerol, 0.025 % ProClin 300
Preservative:	ProClin
Precaution of Use:	This product contains ProClin: a POISONOUS AND HAZARDOUS SUBSTANCE which should be handled by trained staff only.
Storage:	4 °C,-20 °C
Storage Comment:	Store as concentrated solution. Centrifuge briefly prior to opening vial. For short-term storage (1-2 weeks), store at 4°C. For long-term storage, aliquot and store at -20°C or below. Avoid

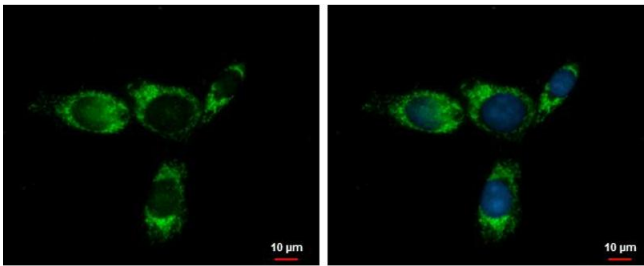
multiple freeze-thaw cycles.

Validation report #101404 for ELISA (ELISA)



Immunoprecipitation

Image 1. IP Image Immunoprecipitation of Glycine dehydrogenase protein from HepG2 whole cell extracts using 5 µg of Glycine dehydrogenase antibody [N3C2-2], Internal, Western blot analysis was performed using Glycine dehydrogenase antibody [N3C2-2], Internal, EasyBlot anti-Rabbit IgG was used as a secondary reagent.



Immunofluorescence

Image 2. ICC/IF Image Glycine dehydrogenase antibody [N3C2-2], Internal detects Glycine dehydrogenase protein at mitochondria by immunofluorescent analysis. Sample: HepG2 cells were fixed in ice-cold MeOH for 5 min. Green: Glycine dehydrogenase protein stained by Glycine dehydrogenase antibody [N3C2-2], Internal, diluted at 1:500. Blue: Hoechst 33342 staining.