

Datasheet for ABIN2856748  
**anti-RBM28 antibody (C-Term)**[Go to Product page](#)

## 2 Images

## Overview

Quantity:	100 µL
Target:	RBM28
Binding Specificity:	C-Term
Reactivity:	Human
Host:	Rabbit
Clonality:	Polyclonal
Conjugate:	This RBM28 antibody is un-conjugated
Application:	Western Blotting (WB), Immunofluorescence (IF), Immunocytochemistry (ICC)

## Product Details

Immunogen:	Recombinant protein encompassing a sequence within the C-terminus region of human RBM28. The exact sequence is proprietary.
Isotype:	IgG
Cross-Reactivity:	Human
Characteristics:	Rabbit Polyclonal antibody to RBM28 (RNA binding motif protein 28) RBM28 antibody
Purification:	Purified by antigen-affinity chromatography.

## Target Details

Target:	RBM28
---------	-------

## Target Details

Alternative Name:	RNA binding motif protein 28 ( <a href="#">RBM28 Products</a> )
Background:	<p>The protein encoded by this gene is a specific nucleolar component of the spliceosomal small nuclear ribonucleoprotein (snRNP) complexes . It specifically associates with U1, U2, U4, U5, and U6 small nuclear RNAs (snRNAs), possibly coordinating their transition through the nucleolus. Mutation in this gene causes alopecia, progressive neurological defects, and endocrinopathy (ANE syndrome), a pleiotropic and clinically heterogeneous disorder. Alternatively spliced transcript variants encoding different isoforms have been found for this gene.</p> <p>Cellular Localization: Nucleus , nucleolus</p>
Molecular Weight:	86 kDa
Gene ID:	55131
UniProt:	<a href="#">Q9NW13</a>
Pathways:	<a href="#">SARS-CoV-2 Protein Interactome</a>

## Application Details

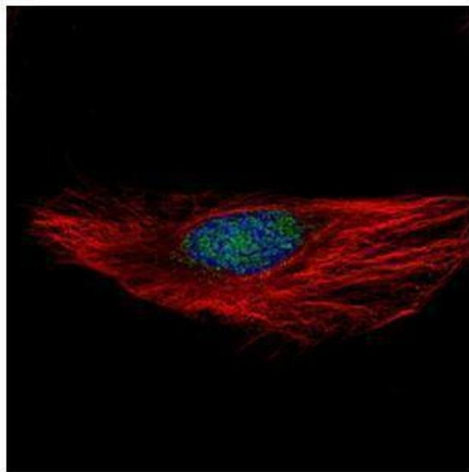
Application Notes:	WB: 1:500-1:3000. ICC/IF: 1:100-1:1000. Optimal dilutions/concentrations should be determined by the researcher. Not tested in other applications.
Comment:	Positive Control: 293T
Restrictions:	For Research Use only

## Handling

Format:	Liquid
Concentration:	1 mg/mL
Buffer:	0.1M Tris-Glycine ( pH 7), 10 % Glycerol, 0.01 % Thimerosal
Preservative:	Thimerosal (Merthiolate)
Precaution of Use:	This product contains Thimerosal (Merthiolate): a POISONOUS AND HAZARDOUS SUBSTANCE which should be handled by trained staff only.
Storage:	4 °C,-20 °C
Storage Comment:	Store as concentrated solution. Centrifuge briefly prior to opening vial. For short-term storage

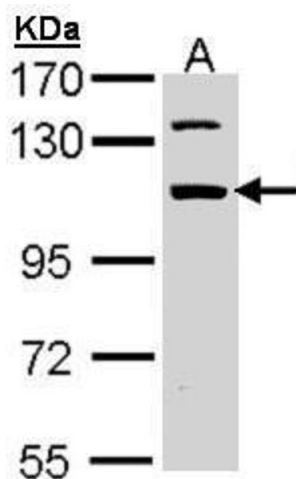
(1-2 weeks), store at 4°C. For long-term storage, aliquot and store at -20°C or below. Avoid multiple freeze-thaw cycles.

## Validation report #101404 for ELISA (ELISA)



### Immunofluorescence

**Image 1.** ICC/IF Image Confocal immunofluorescence analysis (Olympus FV10i) of paraformaldehyde-fixed HeLa, using RBM28, antibody (Green) at 1:100 dilution. Alpha-tubulin filaments were labeled with (Red) at 1:2500.



### Western Blotting

**Image 2.** WB Image Sample (30 ug of whole cell lysate) A: 293T 7.5% SDS PAGE antibody diluted at 1:1000