

Datasheet for ABIN2856749

anti-MCM7 antibody

5 Images

[Go to Product page](#)

Overview

Quantity:	100 µL
Target:	MCM7
Reactivity:	Human
Host:	Rabbit
Clonality:	Polyclonal
Conjugate:	This MCM7 antibody is un-conjugated
Application:	Western Blotting (WB), Immunofluorescence (IF), Immunohistochemistry (Paraffin-embedded Sections) (IHC (p)), Immunoprecipitation (IP), Immunocytochemistry (ICC), Chromatin Immunoprecipitation (ChIP)

Product Details

Immunogen:	Recombinant protein encompassing a sequence within the center region of human MCM7. The exact sequence is proprietary.
Isotype:	IgG
Specificity:	IP/MS validation was supported by references (PMID:30377399)
Cross-Reactivity:	Human
Characteristics:	Rabbit polyclonal antibody to MCM7 (minichromosome maintenance complex component 7) MCM7 antibody [N2C2], Internal
Purification:	Purified by antigen-affinity chromatography.

Target Details

Target:	MCM7
Alternative Name:	minichromosome maintenance complex component 7 (MCM7 Products)
Background:	<p>The protein encoded by this gene is one of the highly conserved mini-chromosome maintenance proteins (MCM) that are essential for the initiation of eukaryotic genome replication. The hexameric protein complex formed by the MCM proteins is a key component of the pre-replication complex (pre_RC) and may be involved in the formation of replication forks and in the recruitment of other DNA replication related proteins. The MCM complex consisting of this protein and MCM2, 4 and 6 proteins possesses DNA helicase activity, and may act as a DNA unwinding enzyme. Cyclin D1-dependent kinase, CDK4, is found to associate with this protein, and may regulate the binding of this protein with the tumorsuppressor protein RB1/RB. Alternatively spliced transcript variants encoding distinct isoforms have been reported.</p> <p>Cellular Localization: Nucleus</p>
Molecular Weight:	81 kDa
Gene ID:	4176
UniProt:	P33993
Pathways:	DNA Damage Repair , Mitotic G1-G1/S Phases , DNA Replication , Chromatin Binding , Synthesis of DNA

Application Details

Application Notes:	WB: 1:500-1:3000. ICC/IF: 1:100-1:1000. IHC-P: 1:100-1:1000. IP: 1:100-1:500. Optimal dilutions/concentrations should be determined by the researcher. Not tested in other applications.
Comment:	Positive Control: H1299 Validation: IP/MS
Restrictions:	For Research Use only

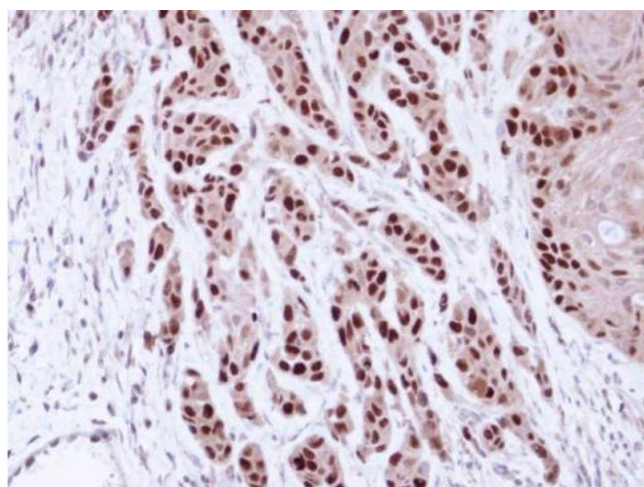
Handling

Format:	Liquid
Concentration:	0.76 mg/mL
Buffer:	0.1M Tris-Glycine (pH 7), 10 % Glycerol, 0.01 % Thimerosal

Handling

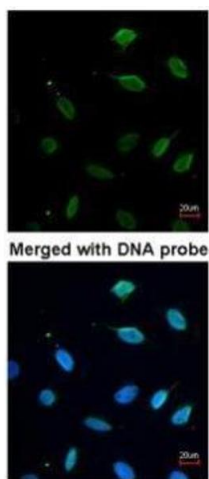
Preservative:	Thimerosal (Merthiolate)
Precaution of Use:	This product contains Thimerosal (Merthiolate): a POISONOUS AND HAZARDOUS SUBSTANCE which should be handled by trained staff only.
Storage:	4 °C,-20 °C
Storage Comment:	Store as concentrated solution. Centrifuge briefly prior to opening vial. For short-term storage (1-2 weeks), store at 4°C. For long-term storage, aliquot and store at -20°C or below. Avoid multiple freeze-thaw cycles.

Validation report #101404 for ELISA (ELISA)



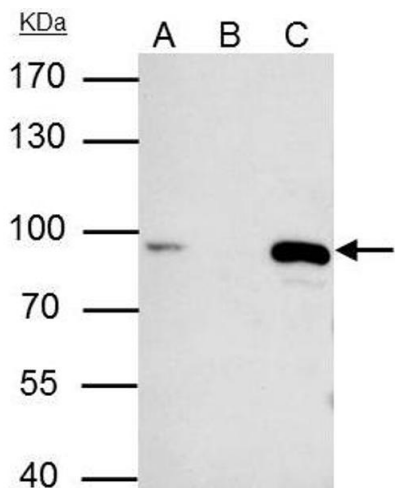
Immunohistochemistry

Image 1. IHC-P Image Immunohistochemical analysis of paraffin-embedded Cal27 Xenograft, using MCM7, antibody at 1:100 dilution.



Immunofluorescence

Image 2. ICC/IF Image Immunofluorescence analysis of paraformaldehyde-fixed HeLa, using MCM7, antibody at 1:200 dilution.



Immunoprecipitation

Image 3. IP Image MCM7 antibody [N2C2], Internal immunoprecipitates MCM7 protein in IP experiments. IP samples: HeLa whole cell extract A. 40 µg HeLa whole cell extract B. Control with 4 µg of preimmune Rabbit IgG C. Immunoprecipitation of MCM7 protein by 4 µg MCM7 antibody [N2C2], Internal , 7.5 % SDS-PAGE The immunoprecipitated MCM7 protein was detected by MCM7 antibody [N2C2], Internal , diluted at 1:1000. [EasyBlot anti-rabbit IgG was used as a secondary reagent]

Please check the [product details page](#) for more images. Overall 5 images are available for ABIN2856749.