

Datasheet for ABIN2856751  
**anti-Aminoacylase 1 antibody**

## 3 Images

[Go to Product page](#)

## Overview

Quantity:	100 µL
Target:	Aminoacylase 1 (ACY1)
Reactivity:	Human
Host:	Rabbit
Clonality:	Polyclonal
Conjugate:	This Aminoacylase 1 antibody is un-conjugated
Application:	Western Blotting (WB), Immunofluorescence (IF), Immunohistochemistry (Paraffin-embedded Sections) (IHC (p)), Immunocytochemistry (ICC)

## Product Details

Immunogen:	Recombinant protein encompassing a sequence within the center region of human Aminoacylase 1. The exact sequence is proprietary.
Isotype:	IgG
Cross-Reactivity:	Human
Characteristics:	Rabbit polyclonal antibody to Aminoacylase 1 Aminoacylase 1 antibody [N2C3-2]
Purification:	Purified by antigen-affinity chromatography.

## Target Details

Target:	Aminoacylase 1 (ACY1)
Alternative Name:	aminoacylase 1 ( <a href="#">ACY1 Products</a> )

## Target Details

**Background:** Aminoacylase-1 is a cytosolic, homodimeric, zinc-binding enzyme that catalyzes the hydrolysis of acylated L-amino acids to L-amino acids and acyl group, and has been postulated to function in the catabolism and salvage of acylated amino acids. ACY1 has been assigned to chromosome 3p21.1, a region reduced to homozygosity in small-cell lung cancer (SCLC), and its expression has been reported to be reduced or undetectable in SCLC cell lines and tumors. The amino acid sequence of human aminoacylase-1 is highly homologous to the porcine counterpart, and ACY1 is the first member of a new family of zinc-binding enzymes.

Cellular Localization: Cytoplasm

**Molecular Weight:** 46 kDa

**Gene ID:** 95

**UniProt:** [Q03154](#)

## Application Details

**Application Notes:** WB: 1:500-1:3000. ICC/IF: 1:100-1:1000. IHC-P: 1:100-1:1000. Optimal dilutions/concentrations should be determined by the researcher. Not tested in other applications.

**Comment:** Positive Control: H1299

**Restrictions:** For Research Use only

## Handling

**Format:** Liquid

**Concentration:** 1 mg/mL

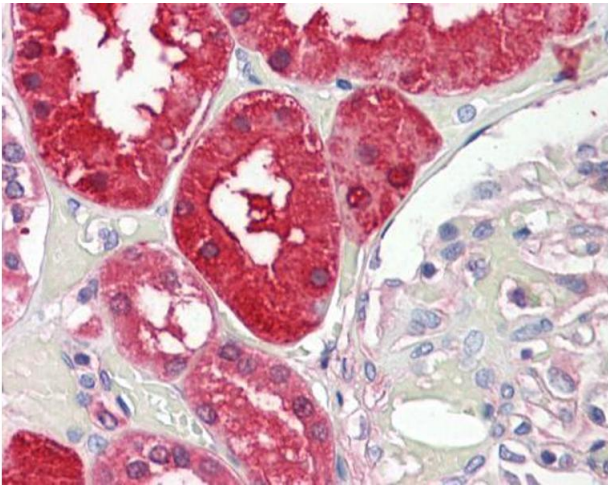
**Buffer:** 0.1M Tris-Glycine ( pH 7), 10 % Glycerol, 0.01 % Thimerosal

**Preservative:** Thimerosal (Merthiolate)

**Precaution of Use:** This product contains Thimerosal (Merthiolate): a POISONOUS AND HAZARDOUS SUBSTANCE which should be handled by trained staff only.

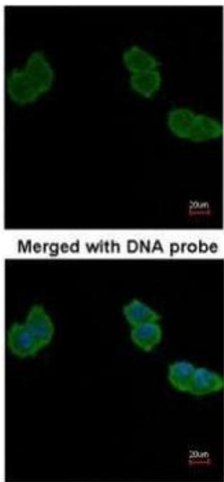
**Storage:** 4 °C,-20 °C

**Storage Comment:** Store as concentrated solution. Centrifuge briefly prior to opening vial. For short-term storage (1-2 weeks), store at 4°C. For long-term storage, aliquot and store at -20°C or below. Avoid multiple freeze-thaw cycles.



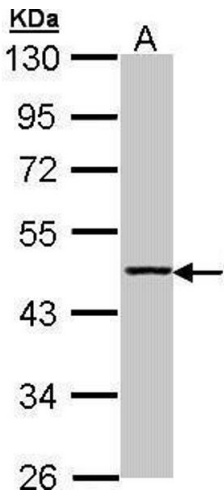
#### Immunohistochemistry

**Image 1.** IHC-P Image Aminoacylase 1 antibody [N2C3-2] detects Aminoacylase-1 protein at cytoplasm on human placenta by immunohistochemical analysis. Sample: Paraffin-embedded placenta. Aminoacylase 1 antibody [N2C3-2], dilution: 1:100.



#### Immunofluorescence

**Image 2.** ICC/IF Image Immunofluorescence analysis of paraformaldehyde-fixed A431, using Aminoacylase-1, antibody at 1:200 dilution.



#### Western Blotting

**Image 3.** WB Image Sample (30 ug of whole cell lysate) A: H1299 10% SDS PAGE antibody diluted at 1:1000