

Datasheet for ABIN285676
anti-CCR8 antibody (AA 7-33)



[Go to Product page](#)

1 Image

Overview

Quantity:	200 µg
Target:	CCR8
Binding Specificity:	AA 7-33
Reactivity:	Mouse
Host:	Goat
Clonality:	Polyclonal
Conjugate:	This CCR8 antibody is un-conjugated
Application:	Western Blotting (WB), ELISA, Immunohistochemistry (IHC), Immunochromatography (IC)

Product Details

Immunogen:	CCR8 antibody was raised in goat using a synthetic peptide PNVTMTDYYPDFFFTAPCDAEFLLRGSM corresponding to amino acid residues 7-33 of mouse CCR8. as the immunogen.
Cross-Reactivity (Details):	Specific to Mouse CCR8. Cross reactivity to other species .

Target Details

Target:	CCR8
Alternative Name:	CCR8 (CCR8 Products)
Background:	Chemokine receptors are G protein-coupled receptors (GPCRs) and play a key role in inflammation and are characterized by similar sequences with a 4 cysteine motif. Studies of CCR8 and its ligands suggest a role in regulation of monocyte chemotaxis and thymic cell

Target Details

apoptosis

Application Details

Application Notes: ELISA: 1:50,000, IC: 1:200, IHC: 1:200, WB: 1:500
Optimal conditions should be determined by the investigator.

Restrictions: For Research Use only

Handling

Concentration: Lot specific

Buffer: 10 mM KHPO₄, pH 7.4, with 140 M NaCl, 1 mg/mL BSA and 0.1 % NaN₃.

Preservative: Sodium azide

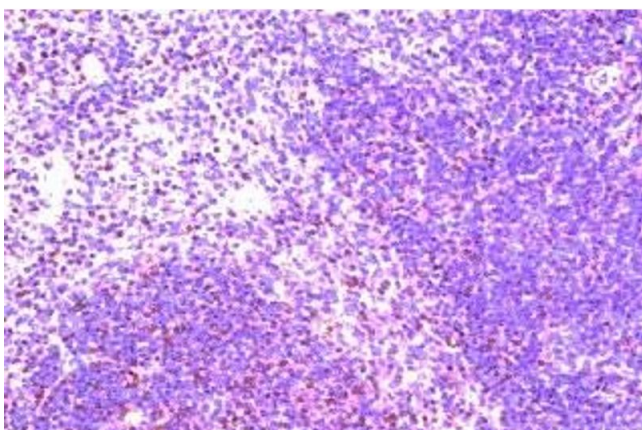
Precaution of Use: This product contains Sodium Azide: a POISONOUS AND HAZARDOUS SUBSTANCE, which should be handled by trained staff only.

Handling Advice: Avoid repeated freeze/thaw cycles.
Dilute only prior to immediate use.

Storage: -20 °C/-80 °C

Storage Comment: Aliquot and store at -20 °C for short term storage, -70 °C for long-term storage.

Images



Immunohistochemistry

Image 1. Immunohistochemistry on paraffin section of human spleen