



[Go to Product page](#)

Datasheet for ABIN2856760

## anti-SEN2 antibody (N-Term)

3 Images

1 Publication

### Overview

Quantity:	100 µL
Target:	SEN2
Binding Specificity:	N-Term
Reactivity:	Human
Host:	Rabbit
Clonality:	Polyclonal
Conjugate:	This SEN2 antibody is un-conjugated
Application:	Western Blotting (WB), Immunohistochemistry (Paraffin-embedded Sections) (IHC (p)), Immunofluorescence (IF), Immunocytochemistry (ICC)

### Product Details

Immunogen:	Carrier-protein conjugated synthetic peptide encompassing a sequence within the N-terminus region of human SEN2. The exact sequence is proprietary.
Isotype:	IgG
Cross-Reactivity:	Cow (Bovine)
Cross-Reactivity (Details):	Bovine (88 %)
Characteristics:	Rabbit Polyclonal antibody to SEN2 (sentrin-specific protease 2) SEN2 antibody [N1], N-term
Purification:	Purified by antigen-affinity chromatography.

## Target Details

Target:	SEN2
Alternative Name:	SEN2 ( <a href="#">SEN2 Products</a> )
Background:	<p>SUMO1 (UBL1, MIM 601912) is a small ubiquitin-like protein that can be covalently conjugated to other proteins. SEN2 is one of a group of enzymes that process newly synthesized SUMO1 into the conjugatable form and catalyze the deconjugation of SUMO1-containing species.[supplied by OMIM]</p> <p>Cellular Localization: Nucleus , nuclear pore complex , Nucleus membrane, Peripheral membrane protein, Nucleoplasmic side , Cytoplasm</p>
Molecular Weight:	68 kDa
Gene ID:	59343
Pathways:	<a href="#">Chromatin Binding</a>

## Application Details

Application Notes:	<p>Suggested dilution Reference ICC/IF 1:100-1:1000* IHC (Formalin-fixed paraffin-embedded sections) 1:100-1:1000* Western blot 1:500-1:3000* Not tested in other applications. *Optimal dilutions/concentrations should be determined by the researcher.Suggested dilutionReferenceICC/IF1:100-1:1000* IHC (Formalin-fixed paraffin-embedded sections)1:100-1:1000* Western blot1:500-1:3000*</p>
Comment:	Positive Control: 293T , Molt-4
Restrictions:	For Research Use only

## Handling

Format:	Liquid
Concentration:	1 mg/mL
Buffer:	0.1M Tris, 0.1M Glycine, 10 % Glycerol ( pH 7). 0.01 % Thimerosal was added as a preservative.
Preservative:	Thimerosal (Merthiolate)
Precaution of Use:	This product contains Thimerosal (Merthiolate): a POISONOUS AND HAZARDOUS SUBSTANCE which should be handled by trained staff only.
Storage:	-20 °C

## Handling

---

Storage Comment: Keep as concentrated solution. Aliquot and store at -20°C or below. Avoid multiple freeze-thaw cycles.

## Publications

---

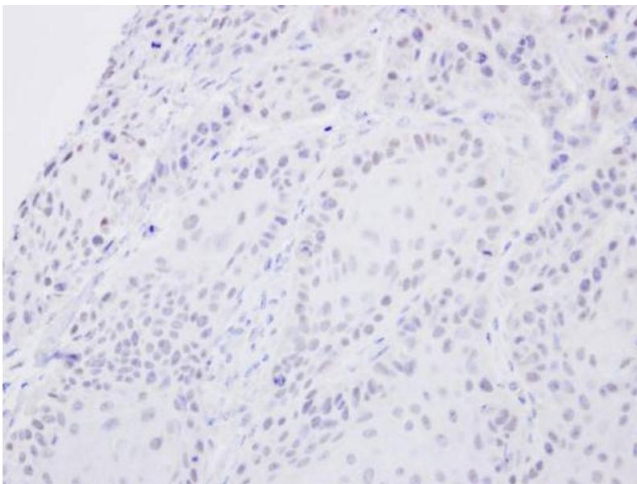
Product cited in: Leeds, Dennis, Lukas, Stoinski, Willis, Schook: "Biologically validating the measurement of oxytocin in western lowland gorilla (*Gorilla gorilla gorilla*) urine and saliva using a commercial enzyme immunoassay." in: **Primates; journal of primatology**, (2018) ([PubMed](#)).

Boose, White, Brand, Meinelt, Snodgrass: "Infant handling in bonobos (*Pan paniscus*): Exploring functional hypotheses and the relationship to oxytocin." in: **Physiology & behavior**, Vol. 193, Issue Pt A, pp. 154-166, (2018) ([PubMed](#)).

Brandtzaeg, Johnsen, Roberg-Larsen, Seip, MacLean, Gesquiere, Leknes, Lundanes, Wilson: "Proteomics tools reveal startlingly high amounts of oxytocin in plasma and serum." in: **Scientific reports**, Vol. 6, pp. 31693, (2016) ([PubMed](#)).

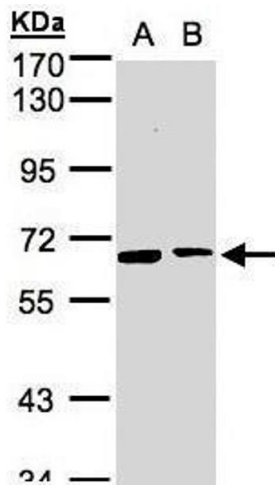
## Images

---



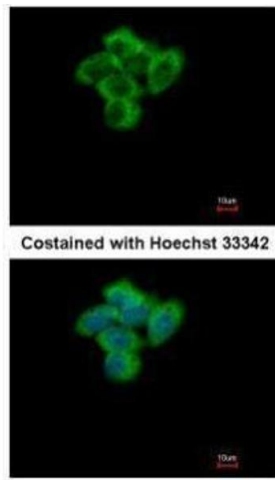
### Immunohistochemistry

**Image 1.** IHC-P Image Immunohistochemical analysis of paraffin-embedded Cal27 xenograft, using SENP2, antibody at 1:500 dilution.



### Western Blotting

**Image 2.** WB Image Sample(30 ug whole cell lysate) A:293T  
B:MOLT4 , 7.5% SDS PAGE antibody diluted at 1:1000



### Immunofluorescence

**Image 3.** ICC/IF Image Immunofluorescence analysis of paraformaldehyde-fixed A431, using SENP2, antibody at 1:500 dilution.