



[Go to Product page](#)

Datasheet for ABIN2856764

anti-PTS antibody

5 Images

Overview

Quantity:	100 µL
Target:	PTS
Reactivity:	Human
Host:	Rabbit
Clonality:	Polyclonal
Conjugate:	This PTS antibody is un-conjugated
Application:	Western Blotting (WB), Immunofluorescence (IF), Immunocytochemistry (ICC), Immunohistochemistry (Paraffin-embedded Sections) (IHC (p))

Product Details

Immunogen:	Full length human PTS Recombinant protein.
Isotype:	IgG
Cross-Reactivity:	Human, Mouse
Characteristics:	Rabbit Polyclonal antibody to PTS (6-pyruvoyltetrahydropterin synthase) PTS antibody [N1C3]
Purification:	Purified by antigen-affinity chromatography.
Grade:	KO Validated

Target Details

Target:	PTS
---------	-----

Target Details

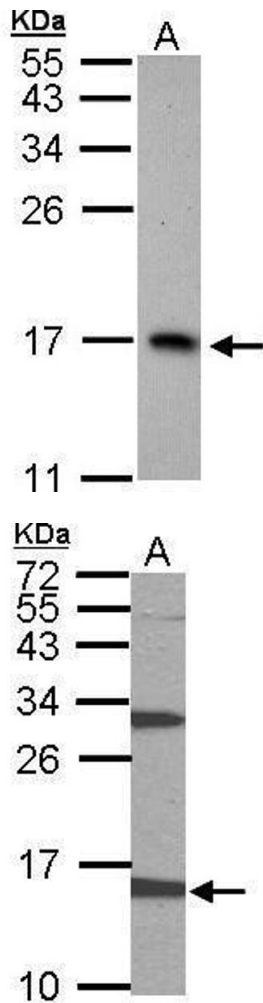
Alternative Name:	6-pyruvoyltetrahydropterin synthase (PTS Products)
Background:	The enzyme encoded by this gene catalyzes the elimination of inorganic triphosphate from dihydroneopterin triphosphate, which is the second and irreversible step in the biosynthesis of tetrahydrobiopterin from GTP. Tetrahydrobiopterin, also known as BH(4), is an essential cofactor and regulator of various enzyme activities, including enzymes involved in serotonin biosynthesis and NO synthase activity. Mutations in this gene result in hyperphenylalaninemia.
Molecular Weight:	16 kDa
Gene ID:	5805
UniProt:	Q03393

Application Details

Application Notes:	WB: 1:1000-1:10000. ICC/IF: 1:100-1:1000. IHC-P: 1:100-1:1000. Optimal dilutions/concentrations should be determined by the researcher. Not tested in other applications.
Comment:	Positive Control: Mouse stomach , H1299 , HeLa , PTS-transfected 293T Validation: KO/KD, Overexpression
Restrictions:	For Research Use only

Handling

Format:	Liquid
Concentration:	1 mg/mL
Buffer:	0.1M Tris-Glycine (pH 7), 10 % Glycerol, 0.01 % Thimerosal
Preservative:	Thimerosal (Merthiolate)
Precaution of Use:	This product contains Thimerosal (Merthiolate): a POISONOUS AND HAZARDOUS SUBSTANCE which should be handled by trained staff only.
Storage:	4 °C,-20 °C
Storage Comment:	Store as concentrated solution. Centrifuge briefly prior to opening vial. For short-term storage (1-2 weeks), store at 4°C. For long-term storage, aliquot and store at -20°C or below. Avoid multiple freeze-thaw cycles.

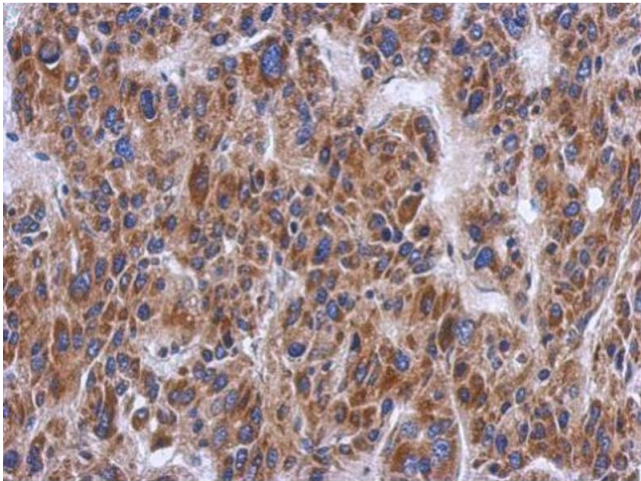


Western Blotting

Image 1. WB Image Sample (30 ug of whole cell lysate) A:
H1299 15% SDS PAGE antibody diluted at 1:1000

Western Blotting

Image 2. WB Image Sample (50 ug of whole cell lysate) A:
mouse stomach 15% SDS PAGE antibody diluted at 1:1000



Immunohistochemistry

Image 3. IHC-P Image Immunohistochemical analysis of paraffin-embedded human hepatoma, using PTS, antibody at 1:500 dilution.

Please check the [product details page](#) for more images. Overall 5 images are available for ABIN2856764.