

Datasheet for ABIN2856766  
**anti-RRAS2 antibody (Center)**



[Go to Product page](#)

3 Images

## Overview

Quantity:	100 µL
Target:	RRAS2
Binding Specificity:	Center
Reactivity:	Human, Mouse
Host:	Rabbit
Clonality:	Polyclonal
Conjugate:	This RRAS2 antibody is un-conjugated
Application:	Western Blotting (WB), Immunohistochemistry (Paraffin-embedded Sections) (IHC (p))

## Product Details

Immunogen:	Recombinant protein encompassing a sequence within the center region of human TC21. The exact sequence is proprietary.
Isotype:	IgG
Cross-Reactivity:	Rat (Rattus), Rhesus Monkey, Cow (Bovine)
Cross-Reactivity (Details):	Rat (100 %), Rhesus Monkey (100 %), Bovine (100 %)
Characteristics:	Rabbit Polyclonal antibody to TC21 (related RAS viral (r-ras) oncogene homolog 2) TC21 antibody [N1C3]
Purification:	Purified by antigen-affinity chromatography.

## Target Details

Target:	RRAS2
Alternative Name:	TC21 ( <a href="#">RRAS2 Products</a> )
Background:	<p>This gene encodes a member of the R-Ras subfamily of Ras-like small GTPases. The encoded protein associates with the plasma membrane and may function as a signal transducer. This protein may play an important role in activating signal transduction pathways that control cell proliferation. Mutations in this gene are associated with the growth of certain tumors.</p> <p>Pseudogenes of this gene are found on chromosomes 1 and 2. Alternate splicing results in multiple transcript variants.</p> <p>Cellular Localization: Cell membrane, Lipid-anchor, Cytoplasmic side (By similarity)</p>
Molecular Weight:	23 kDa
Gene ID:	22800

## Application Details

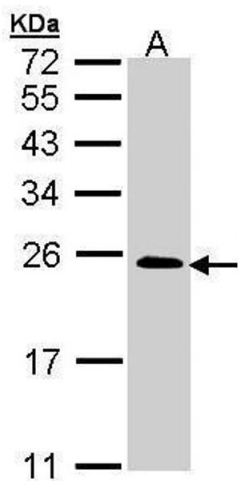
Application Notes:	<p>Suggested dilution Reference IHC (Formalin-fixed paraffin-embedded sections) 1:100-1:1000* Western blot 1:1000-1:10000* Not tested in other applications. *Optimal dilutions/concentrations should be determined by the researcher.Suggested dilutionReferenceIHC (Formalin-fixed paraffin-embedded sections)1:100-1:1000* Western blot1:1000-1:10000*</p>
Comment:	Positive Control: 293T , A431 , H1299 , HeLa , HepG2 , Molt-4 , Raji , mouse brain
Restrictions:	For Research Use only

## Handling

Format:	Liquid
Concentration:	0.69 mg/mL
Buffer:	0.1M Tris, 0.1M Glycine, 10 % Glycerol ( pH 7). 0.01 % Thimerosal was added as a preservative.
Preservative:	Thimerosal (Merthiolate)
Precaution of Use:	This product contains Thimerosal (Merthiolate): a POISONOUS AND HAZARDOUS SUBSTANCE which should be handled by trained staff only.
Storage:	-20 °C
Storage Comment:	Keep as concentrated solution. Aliquot and store at -20°C or below. Avoid multiple freeze-thaw

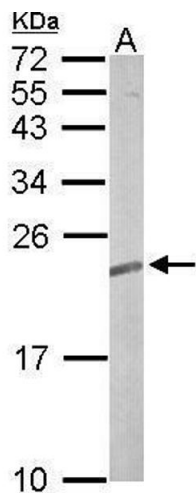
cycles.

Images



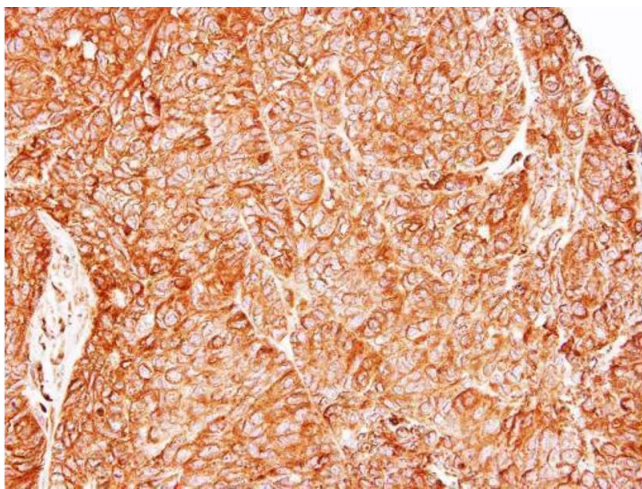
Western Blotting

**Image 1.** WB Image Sample (30 ug of whole cell lysate) A:  
A431 , 12% SDS PAGE antibody diluted at 1:5000



Western Blotting

**Image 2.** WB Image Sample (50 ug of whole cell lysate) A:  
mouse brain 12% SDS PAGE antibody diluted at 1:5000



Immunohistochemistry

**Image 3.** IHC-P Image Immunohistochemical analysis of  
paraffin-embedded DLD1 xenograft, using TC21, antibody at  
1:500 dilution.