

Datasheet for ABIN2856768

anti-KRT20 antibody

8 Images

1 Publication

[Go to Product page](#)

Overview

Quantity:	100 µL
Target:	KRT20
Reactivity:	Human
Host:	Rabbit
Clonality:	Polyclonal
Conjugate:	This KRT20 antibody is un-conjugated
Application:	Western Blotting (WB), Immunohistochemistry (Paraffin-embedded Sections) (IHC (p)), Immunofluorescence (IF), Immunocytochemistry (ICC)

Product Details

Immunogen:	Recombinant protein encompassing a sequence within the center region of human Cytokeratin 20. The exact sequence is proprietary.
Isotype:	IgG
Cross-Reactivity:	Human, Mouse
Characteristics:	Rabbit polyclonal antibody to Cytokeratin 20 (keratin 20) Cytokeratin 20 antibody [N2C2], Internal
Purification:	Purified by antigen-affinity chromatography.

Target Details

Target:	KRT20
Alternative Name:	keratin 20 (KRT20 Products)

Target Details

Background: The protein encoded by this gene is a member of the keratin family. The keratins are intermediate filament proteins responsible for the structural integrity of epithelial cells and are subdivided into cytokeratins and hair keratins. The type I cytokeratins consist of acidic proteins which are arranged in pairs of heterotypic keratin chains. This cytokeratin is a major cellular protein of mature enterocytes and goblet cells and is specifically expressed in the gastric and intestinal mucosa. The type I cytokeratin genes are clustered in a region of chromosome 17q12-q21.

Cellular Localization: Cytoplasm

Molecular Weight: 48 kDa

Gene ID: 54474

UniProt: [P35900](#)

Application Details

Application Notes: WB: 1:500-1:3000. ICC/IF: 1:100-1:1000. IHC-P: 1:100-1:1000. Optimal dilutions/concentrations should be determined by the researcher. Not tested in other applications.

Comment: Positive Control: HeLa
Validation: Orthogonal

Restrictions: For Research Use only

Handling

Format: Liquid

Concentration: 0.88 mg/mL

Buffer: 1XPBS (pH 7), 20 % Glycerol, 0.025 % ProClin 300

Preservative: ProClin

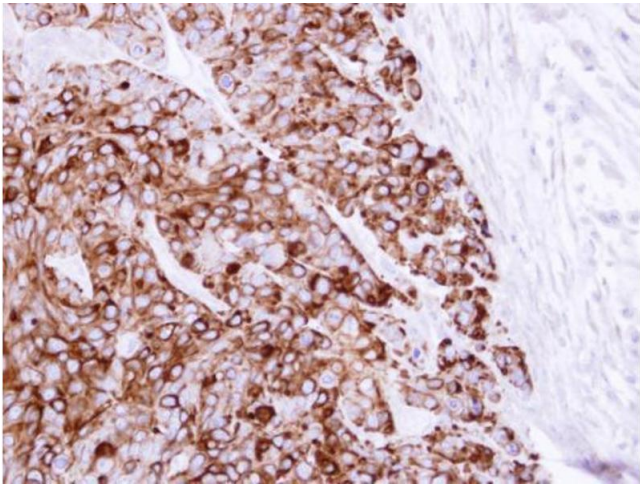
Precaution of Use: This product contains ProClin: a POISONOUS AND HAZARDOUS SUBSTANCE which should be handled by trained staff only.

Storage: 4 °C, -20 °C

Storage Comment: Store as concentrated solution. Centrifuge briefly prior to opening vial. For short-term storage (1-2 weeks), store at 4°C. For long-term storage, aliquot and store at -20°C or below. Avoid multiple freeze-thaw cycles.

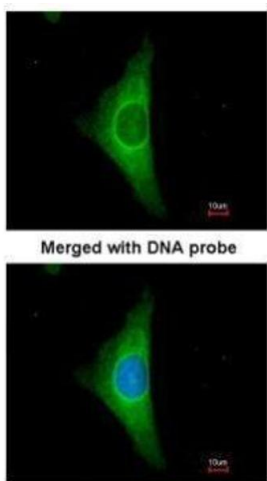
Product cited in: Tang, Lee, Kim, Bishop, Rodgers: "siRNA-knockdown of ADAMTS-13 modulates endothelial cell angiogenesis." in: **Microvascular research**, Vol. 113, pp. 65-70, (2018) ([PubMed](#)).

Validation report #100014 for Immunofluorescence (IF)



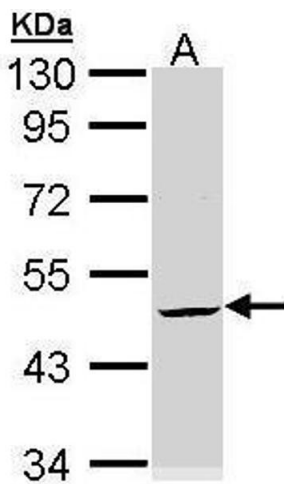
Immunohistochemistry

Image 1. IHC-P Image Immunohistochemical analysis of paraffin-embedded HT29 xenograft, using Cytokeratin 20, antibody at 1:100 dilution.



Immunofluorescence

Image 2. ICC/IF Image Immunofluorescence analysis of paraformaldehyde-fixed HeLa, using Cytokeratin 20, antibody at 1:200 dilution.



Western Blotting

Image 3. WB Image Sample (30 ug of whole cell lysate) A: Hela 10% SDS PAGE antibody diluted at 1:3000

Please check the [product details page](#) for more images. Overall 8 images are available for ABIN2856768.