

Datasheet for ABIN2856769

anti-CS antibody

13 Images

5 Publications

[Go to Product page](#)

Overview

Quantity:	100 µL
Target:	CS
Reactivity:	Human
Host:	Rabbit
Clonality:	Polyclonal
Conjugate:	This CS antibody is un-conjugated
Application:	Western Blotting (WB), Immunoprecipitation (IP), Immunofluorescence (IF), Immunocytochemistry (ICC), Immunohistochemistry (Paraffin-embedded Sections) (IHC (p)), Immunohistochemistry (Whole Mount) (IHC (wm))

Product Details

Immunogen:	Recombinant protein encompassing a sequence within the center region of human Citrate synthetase. The exact sequence is proprietary.
Isotype:	IgG
Cross-Reactivity:	Chicken, Frog, Human, Monkey, Mouse, Rat, Zebrafish (Danio rerio)
Characteristics:	Rabbit Polyclonal antibody to Citrate synthetase (citrate synthase) Citrate synthetase antibody [N2C3]
Purification:	Purified by antigen-affinity chromatography.
Grade:	KO Validated

Target Details

Target:	CS
Alternative Name:	citrate synthase (CS Products)
Background:	<p>The protein encoded by this gene is a Krebs tricarboxylic acid cycle enzyme that catalyzes the synthesis of citrate from oxaloacetate and acetyl coenzyme A. The enzyme is found in nearly all cells capable of oxidative metabolism. This protein is nuclear encoded and transported into the mitochondrial matrix, where the mature form is found.</p> <p>Cellular Localization: Mitochondrion matrix</p>
Molecular Weight:	52 kDa
Gene ID:	1431
UniProt:	O75390

Application Details

Application Notes:	WB: 1:500-1:3000. ICC/IF: 1:100-1:1000. IHC-P: 1:100-1:1000. IP: 1:100-1:500. Optimal dilutions/concentrations should be determined by the researcher. Not tested in other applications.
Comment:	Positive Control: mouse brain , rat brain , Rat muscle , 293T Validation: KO/KD
Restrictions:	For Research Use only

Handling

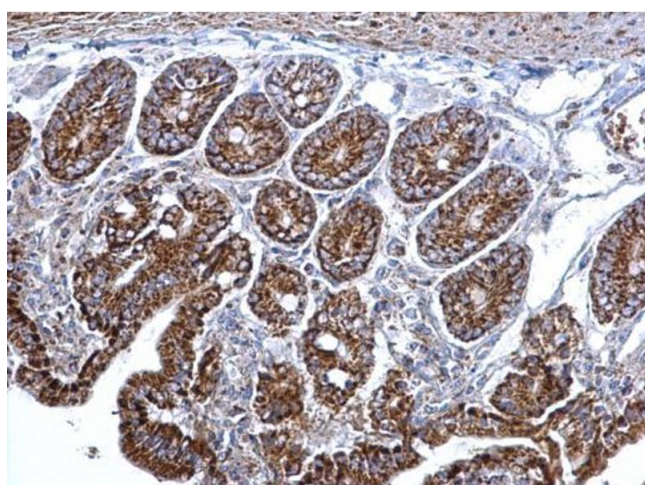
Format:	Liquid
Concentration:	0.65 mg/mL
Buffer:	1XPBS pH 7, 20 % Glycerol, 0.025 % ProClin 300
Preservative:	ProClin
Precaution of Use:	This product contains ProClin: a POISONOUS AND HAZARDOUS SUBSTANCE which should be handled by trained staff only.
Storage:	4 °C, -20 °C
Storage Comment:	Store as concentrated solution. Centrifuge briefly prior to opening vial. For short-term storage (1-2 weeks), store at 4°C. For long-term storage, aliquot and store at -20°C or below. Avoid

multiple freeze-thaw cycles.

Publications

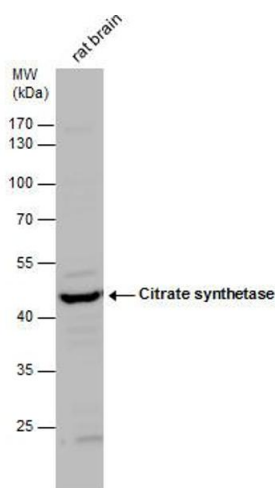
Product cited in: Xu, Zhou, Xiong, Zou, Deng, Ganaie, Kleiboeker, Peng, Liu, Wang, Ye, Qiu: "Parvovirus B19 NS1 protein induces cell cycle arrest at G2-phase by activating the ATR-CDC25C-CDK1 pathway." in: **PLoS pathogens**, Vol. 13, Issue 3, pp. e1006266, (2017) ([PubMed](#)).

Validation report #101746 for Immunofluorescence (IF)



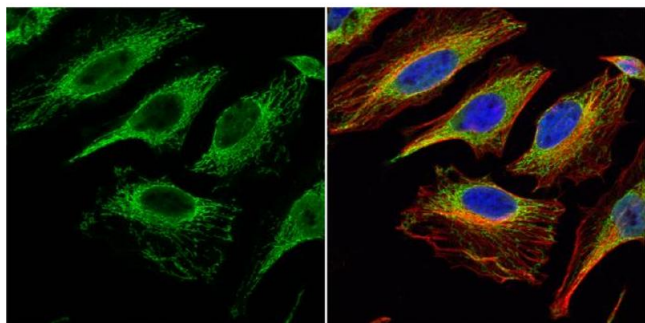
Immunohistochemistry

Image 1. IHC-P Image Citrate synthetase antibody [N2C3] detects Citrate synthetase protein at mitochondria on mouse intestine by immunohistochemical analysis. Sample: Paraffin-embedded mouse intestine. Citrate synthetase antibody [N2C3], dilution: 1:500.



Western Blotting

Image 2. WB Image Citrate synthetase antibody detects Citrate synthetase protein by western blot analysis. Rat tissue extracts (50 µg) was separated by 10 % SDS-PAGE, and the membrane was blotted with Citrate synthetase antibody, diluted by 1:1000.



Immunofluorescence

Image 3. ICC/IF Image Citrate synthetase antibody [N2C3] detects Citrate synthetase protein at mitochondria by immunofluorescent analysis. Sample: HeLa cells were fixed in 4% paraformaldehyde at RT for 15 min. Green: Citrate synthetase protein stained by Citrate synthetase antibody [N2C3] , diluted at 1:200. Red: alpha Tubulin, a cytoskeleton marker, stained by alpha Tubulin antibody [GT114] , diluted at 1:1000. Blue: Hoechst 33342 staining.

Please check the [product details page](#) for more images. Overall 13 images are available for ABIN2856769.