

Datasheet for ABIN2856770

anti-RAB6A antibody

8 Images

2 Publications

[Go to Product page](#)

Overview

Quantity:	100 µL
Target:	RAB6A
Reactivity:	Human
Host:	Rabbit
Clonality:	Polyclonal
Conjugate:	This RAB6A antibody is un-conjugated
Application:	Western Blotting (WB), Immunofluorescence (IF), Immunocytochemistry (ICC), Immunohistochemistry (Paraffin-embedded Sections) (IHC (p))

Product Details

Immunogen:	Full length human RAB6A Recombinant protein.
Isotype:	IgG
Cross-Reactivity:	Human, Mouse, Rat
Characteristics:	Rabbit Polyclonal antibody to RAB6A (RAB6A, member RAS oncogene family) RAB6A antibody
Purification:	Purified by antigen-affinity chromatography.
Grade:	KO Validated

Target Details

Target:	RAB6A
---------	-------

Target Details

Alternative Name:	RAB6A, member RAS oncogene family (RAB6A Products)
Background:	Protein transport. Regulator of membrane traffic from the Golgi apparatus towards the endoplasmic reticulum (ER). Has a low GTPase activity. Cellular Localization: Golgi apparatus membrane, Lipid-anchor
Molecular Weight:	24 kDa
Gene ID:	5870
UniProt:	P20340

Application Details

Application Notes:	WB: 1:500-1:3000. ICC/IF: 1:100-1:1000. IHC-P: 1:100-1:1000. Optimal dilutions/concentrations should be determined by the researcher. Not tested in other applications.
Comment:	Positive Control: mouse brain , rat brain , 293T Validation: KO/KD, Orthogonal
Restrictions:	For Research Use only

Handling

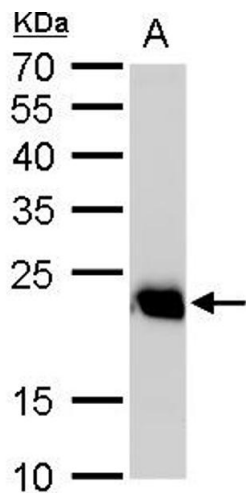
Format:	Liquid
Concentration:	0.21 mg/mL
Buffer:	1XPBS pH 7, 1 % BSA, 20 % Glycerol, 0.025 % ProClin 300
Preservative:	ProClin
Precaution of Use:	This product contains ProClin: a POISONOUS AND HAZARDOUS SUBSTANCE which should be handled by trained staff only.
Storage:	4 °C,-20 °C
Storage Comment:	Store as concentrated solution. Centrifuge briefly prior to opening vial. For short-term storage (1-2 weeks), store at 4°C. For long-term storage, aliquot and store at -20°C or below. Avoid multiple freeze-thaw cycles.

Publications

Product cited in:	Xu, Zhou, Xiong, Zou, Deng, Ganaie, Kleiboeker, Peng, Liu, Wang, Ye, Qiu: "Parvovirus B19 NS1
-------------------	---

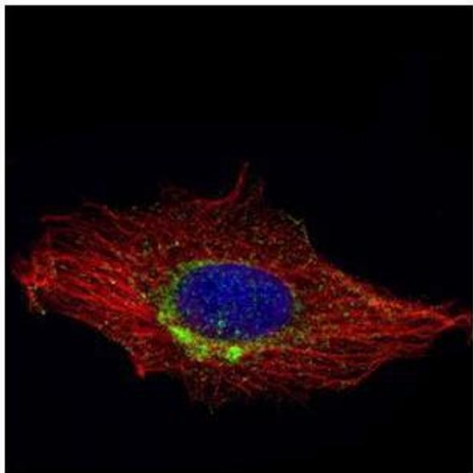
protein induces cell cycle arrest at G2-phase by activating the ATR-CDC25C-CDK1 pathway." in:
PLoS pathogens, Vol. 13, Issue 3, pp. e1006266, (2017) ([PubMed](#)).

Validation report #101746 for Immunofluorescence (IF)



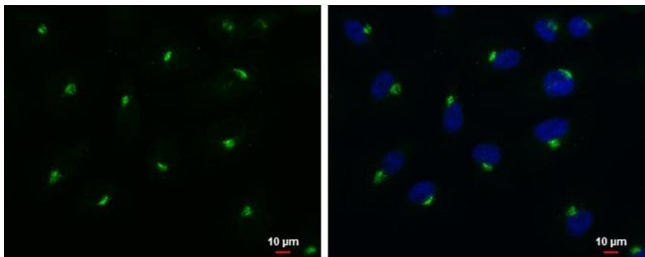
Western Blotting

Image 1. WB Image RAB6A antibody detects RAB6A protein by western blot analysis. A. 50 µg rat brain cell lysate/extract 12 % SDS-PAGE RAB6A antibody , dilution: 1:1000



Immunofluorescence

Image 2. ICC/IF Image Confocal immunofluorescence analysis (Olympus FV10i) of methanol-fixed HeLa, using RAB6A, antibody (Green) at 1:1000 dilution. Alpha-tubulin filaments were labeled with (Red) at 1:2000.



Immunofluorescence

Image 3. ICC/IF Image RAB6A antibody detects RAB6A protein at Golgi apparatus by immunofluorescent analysis. Sample: A549 cells were fixed in 4% paraformaldehyde at RT for 15 min. Green: RAB6A protein stained by RAB6A antibody , diluted at 1:500. Blue: Hoechst 33342 staining. Scale bar = 10 µm.

Please check the [product details page](#) for more images. Overall 8 images are available for ABIN2856770.