

Datasheet for ABIN2856774
anti-JMJD6 antibody (Center)

3 Images

[Go to Product page](#)

Overview

Quantity:	100 µL
Target:	JMJD6
Binding Specificity:	Center
Reactivity:	Human, Mouse
Host:	Rabbit
Clonality:	Polyclonal
Conjugate:	This JMJD6 antibody is un-conjugated
Application:	Western Blotting (WB), Immunohistochemistry (Paraffin-embedded Sections) (IHC (p))

Product Details

Immunogen:	Recombinant protein encompassing a sequence within the center region of human PSR. The exact sequence is proprietary.
Isotype:	IgG
Cross-Reactivity:	Chicken, Rat (Rattus), Zebrafish (Danio rerio), Cow (Bovine), Xenopus tropicalis
Cross-Reactivity (Details):	Chicken (96 %), Rat (98 %), Zebrafish (87 %), Bovine (98 %), Xenopus tropicalis (87 %)
Characteristics:	Rabbit polyclonal antibody to PSR (jumonji domain containing 6) PSR antibody
Purification:	Purified by antigen-affinity chromatography.

Target Details

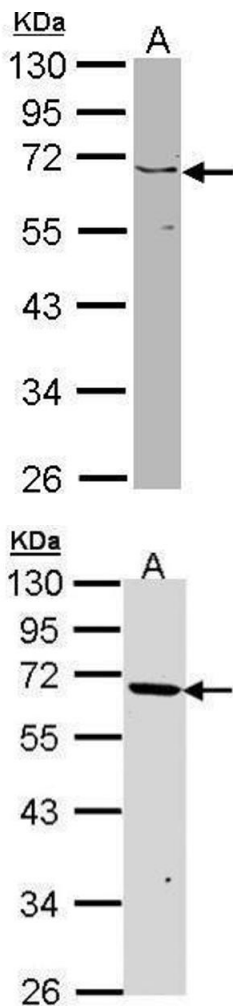
Target:	JMJD6
Alternative Name:	PSR (JMJD6 Products)
Background:	<p>This gene encodes a nuclear protein with a JmjC domain. JmjC domain-containing proteins are predicted to function as protein hydroxylases or histone demethylases. This protein was first identified as a putative phosphatidylserine receptor involved in phagocytosis of apoptotic cells, however, subsequent studies have indicated that it does not directly function in the clearance of apoptotic cells, and questioned whether it is a true phosphatidylserine receptor. Multiple transcript variants encoding different isoforms have been found for this gene.</p> <p>Cellular Localization: Nucleus</p>
Molecular Weight:	46 kDa
Gene ID:	23210

Application Details

Application Notes:	<p>Suggested dilution Reference IHC (Formalin-fixed paraffin-embedded sections) 1:100-1:1000* Western blot 1:500-1:3000* Not tested in other applications. *Optimal dilutions/concentrations should be determined by the researcher.Suggested dilutionReferenceIHC (Formalin-fixed paraffin-embedded sections)1:100-1:1000* Western blot1:500-1:3000*</p>
Comment:	Positive Control: 293T , A431 , H1299 , HeLa , HepG2 , Molt-4 , Raji , NIH-3T3
Restrictions:	For Research Use only

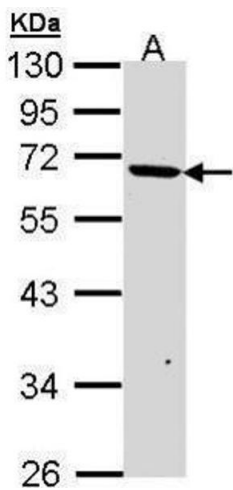
Handling

Format:	Liquid
Concentration:	1 mg/mL
Buffer:	0.1M Tris, 0.1M Glycine, 10 % Glycerol (pH 7). 0.01 % Thimerosal was added as a preservative.
Preservative:	Thimerosal (Merthiolate)
Precaution of Use:	This product contains Thimerosal (Merthiolate): a POISONOUS AND HAZARDOUS SUBSTANCE which should be handled by trained staff only.
Storage:	-20 °C
Storage Comment:	Keep as concentrated solution. Aliquot and store at -20°C or below. Avoid multiple freeze-thaw cycles.



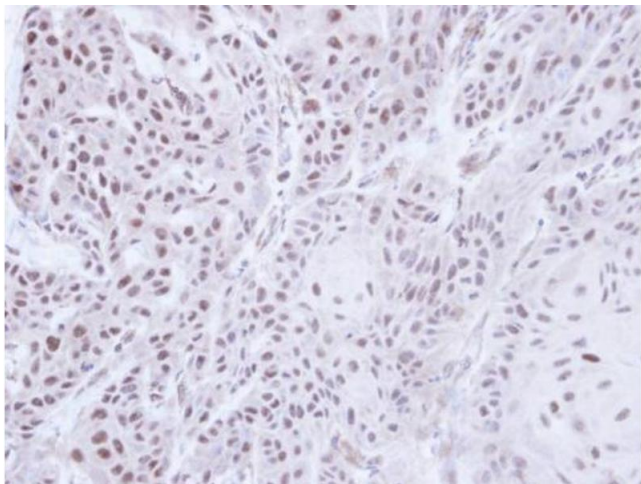
Western Blotting

Image 1. WB Image Sample (30 ug of whole cell lysate) A: NIH-3T3 10% SDS PAGE PSR antibody antibody diluted at 1:1000



Western Blotting

Image 2. WB Image Sample (30 ug of whole cell lysate) A: A431 , 10% SDS PAGE antibody diluted at 1:1000



Immunohistochemistry

Image 3. IHC-P Image Immunohistochemical analysis of paraffin-embedded Cal27 Xenograft, using PSR, antibody at 1:100 dilution.