

Datasheet for ABIN2856775

anti-FBXL3 antibody

3 Images

1 Publication

[Go to Product page](#)

Overview

Quantity:	100 µL
Target:	FBXL3
Reactivity:	Human
Host:	Rabbit
Clonality:	Polyclonal
Conjugate:	This FBXL3 antibody is un-conjugated
Application:	Western Blotting (WB), Immunocytochemistry (ICC), Immunofluorescence (IF)

Product Details

Immunogen:	Recombinant protein encompassing a sequence within the center region of human FBXL3. The exact sequence is proprietary.
Isotype:	IgG
Cross-Reactivity:	Human, Mouse
Characteristics:	Rabbit Polyclonal antibody to FBXL3 (F-box and leucine-rich repeat protein 3) FBXL3 antibody
Purification:	Purified by antigen-affinity chromatography.

Target Details

Target:	FBXL3
Alternative Name:	F-box and leucine rich repeat protein 3 (FBXL3 Products)

Target Details

Background:	<p>This gene encodes a member of the F-box protein family which is characterized by an approximately 40 amino acid motif, the F-box. The F-box proteins constitute one of the four subunits of ubiquitin protein ligase complex called SCFs (SKP1-cullin-F-box), which function in phosphorylation-dependent ubiquitination. The F-box proteins are divided into 3 classes: Fbws containing WD-40 domains, Fbls containing leucine-rich repeats, and Fbxs containing either different protein-protein interaction modules or no recognizable motifs. The protein encoded by this gene belongs to the Fbls class and, in addition to an F-box, contains several tandem leucine-rich repeats and is localized in the nucleus.</p> <p>Cellular Localization: Nucleus , Cytoplasm</p>
Molecular Weight:	49 kDa
Gene ID:	26224
UniProt:	Q9UKT7
Pathways:	Photoperiodism

Application Details

Application Notes:	WB: 1:500-1:3000. ICC/IF: 1:100-1:1000. Optimal dilutions/concentrations should be determined by the researcher. Not tested in other applications.
Comment:	Positive Control: C2C12 , Molt-4
Restrictions:	For Research Use only

Handling

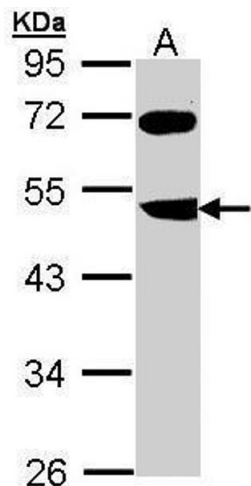
Format:	Liquid
Concentration:	0.41 mg/mL
Buffer:	0.1M Tris-Glycine (pH 7), 10 % Glycerol, 0.01 % Thimerosal
Preservative:	Thimerosal (Merthiolate)
Precaution of Use:	This product contains Thimerosal (Merthiolate): a POISONOUS AND HAZARDOUS SUBSTANCE which should be handled by trained staff only.
Storage:	4 °C,-20 °C
Storage Comment:	Store as concentrated solution. Centrifuge briefly prior to opening vial. For short-term storage (1-2 weeks), store at 4°C. For long-term storage, aliquot and store at -20°C or below. Avoid

multiple freeze-thaw cycles.

Publications

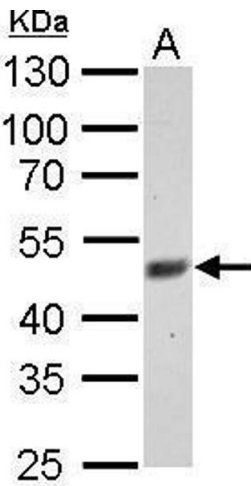
Product cited in: Whiting, Ogier, Forbush, Bucko, Gopalan, Seternes, Langeberg, Scott: "AKAP220 manages apical actin networks that coordinate aquaporin-2 location and renal water reabsorption." in: **Proceedings of the National Academy of Sciences of the United States of America**, Vol. 113, Issue 30, pp. E4328-37, (2016) ([PubMed](#)).

Validation report #101404 for ELISA (ELISA)



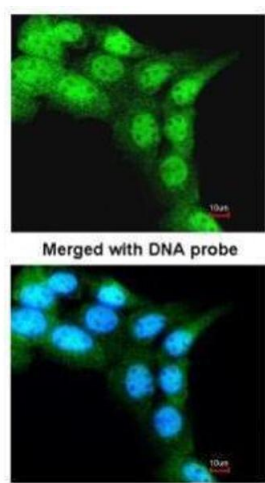
Western Blotting

Image 1. WB Image Sample (30 ug of whole cell lysate) A: Molt-4 , 10% SDS PAGE antibody diluted at 1:1000



Western Blotting

Image 2. WB Image FBXL3 antibody detects FBXL3 protein by Western blot analysis. A. 30 µg C2C12 whole cell lysate/extract 10 % SDS-PAGE FBXL3 antibody , dilution: 1:500



Immunofluorescence

Image 3. ICC/IF Image Immunofluorescence analysis of paraformaldehyde-fixed A431, using FBXL3, antibody at 1:200 dilution.