



[Go to Product page](#)

Datasheet for ABIN2856779
anti-BCL2-Like 15 antibody

3 Images

Overview

Quantity:	100 µL
Target:	BCL2-Like 15 (BCL2L5)
Reactivity:	Human
Host:	Rabbit
Clonality:	Polyclonal
Conjugate:	This BCL2-Like 15 antibody is un-conjugated
Application:	Western Blotting (WB), Immunofluorescence (IF), Immunohistochemistry (Paraffin-embedded Sections) (IHC (p)), Immunocytochemistry (ICC)

Product Details

Immunogen:	Full length human BCL2L15 Recombinant protein.
Isotype:	IgG
Cross-Reactivity:	Human
Characteristics:	Rabbit Polyclonal antibody to BCL2L15 (BCL2-like 15) BCL2L15 antibody
Purification:	Purified by antigen-affinity chromatography.

Target Details

Target:	BCL2-Like 15 (BCL2L5)
Alternative Name:	BCL2 like 15 (BCL2L5 Products)

Target Details

Molecular Weight: 18 kDa

Gene ID: 440603

UniProt: [Q5TBC7](#)

Application Details

Application Notes: WB: 1:500-1:3000. ICC/IF: 1:100-1:1000. IHC-P: 1:100-1:1000. Optimal dilutions/concentrations should be determined by the researcher. Not tested in other applications.

Comment: Positive Control: Raji

Restrictions: For Research Use only

Handling

Format: Liquid

Concentration: 1 mg/mL

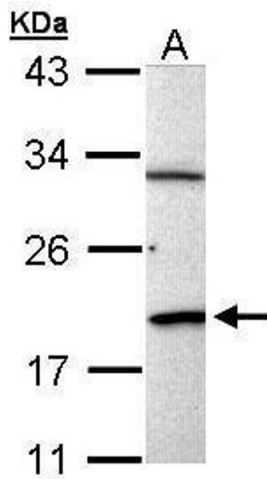
Buffer: 0.1M Tris-Glycine (pH 7), 10 % Glycerol, 0.01 % Thimerosal

Preservative: Thimerosal (Merthiolate)

Precaution of Use: This product contains Thimerosal (Merthiolate): a POISONOUS AND HAZARDOUS SUBSTANCE which should be handled by trained staff only.

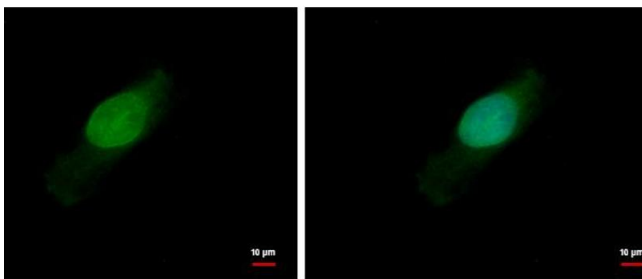
Storage: 4 °C, -20 °C

Storage Comment: Store as concentrated solution. Centrifuge briefly prior to opening vial. For short-term storage (1-2 weeks), store at 4°C. For long-term storage, aliquot and store at -20°C or below. Avoid multiple freeze-thaw cycles.



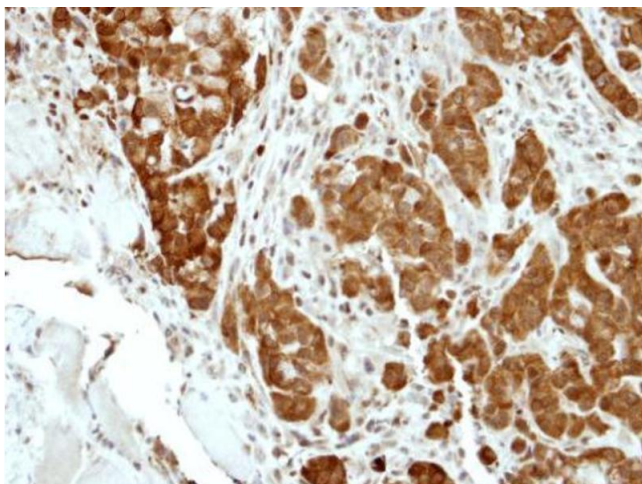
Western Blotting

Image 1. WB Image Sample (30 ug of whole cell lysate) A: Raji 12% SDS PAGE antibody diluted at 1:1000



Immunofluorescence

Image 2. ICC/IF Image BCL2L15 antibody detects BCL2L15 protein at nucleus by immunofluorescent analysis. Sample: HeLa cells were fixed in ice-cold MeOH for 5 min. Green: BCL2L15 protein stained by BCL2L15 antibody, diluted at 1:500. Blue: Hoechst 33342 staining.



Immunohistochemistry

Image 3. IHC-P Image Immunohistochemical analysis of paraffin-embedded A549 xenograft, using BCL2L15, antibody at 1:500 dilution.