

Datasheet for ABIN2856782

anti-Fission 1 antibody (full length)

8 Images

12 Publications

[Go to Product page](#)

Overview

Quantity:	100 µL
Target:	Fission 1 (FIS1)
Binding Specificity:	full length
Reactivity:	Human, Mouse, Rat
Host:	Rabbit
Clonality:	Polyclonal
Conjugate:	This Fission 1 antibody is un-conjugated
Application:	Western Blotting (WB), Immunofluorescence (IF), Immunocytochemistry (ICC), Immunohistochemistry (Paraffin-embedded Sections) (IHC (p))

Product Details

Immunogen:	Full length human FIS1 Recombinant protein.
Isotype:	IgG
Cross-Reactivity:	Rhesus Monkey
Cross-Reactivity (Details):	Rhesus Monkey (100 %)
Characteristics:	Rabbit Polyclonal antibody to FIS1 (fission 1 (mitochondrial outer membrane) homolog (S. cerevisiae)) FIS1 antibody
Purification:	Purified by antigen-affinity chromatography.

Target Details

Target:	Fission 1 (FIS1)
Alternative Name:	FIS1 (FIS1 Products)
Background:	<p>The balance between fission and fusion regulates the morphology of mitochondria. TTC11 is a component of a mitochondrial complex that promotes mitochondrial fission (James et al., 2003 [PubMed 12783892]).[supplied by OMIM]</p> <p>Cellular Localization: Mitochondrion outer membrane, Single-pass membrane protein , Peroxisome membrane, Single-pass membrane protein</p>
Molecular Weight:	17 kDa
Gene ID:	51024
Pathways:	Positive Regulation of Endopeptidase Activity

Application Details

Application Notes:	<p>Suggested dilution Reference ICC/IF 1:100-1:2000* IHC (Formalin-fixed paraffin-embedded sections) 1:100-1:1000* Western blot 1:500-1:20000* Not tested in other applications. *Optimal dilutions/concentrations should be determined by the researcher.Suggested dilutionReferenceICC/IF1:100-1:2000* IHC (Formalin-fixed paraffin-embedded sections)1:100-1:1000* Western blot1:500-1:20000*</p>
Comment:	Positive Control: Raji , 293T , A431 , HeLa , HepG2 , mouse liver , mouse brain , rat brain
Restrictions:	For Research Use only

Handling

Format:	Liquid
Concentration:	1 mg/mL
Buffer:	0.1M Tris, 0.1M Glycine, 10 % Glycerol (pH 7). 0.01 % Thimerosal was added as a preservative.
Preservative:	Thimerosal (Merthiolate)
Precaution of Use:	This product contains Thimerosal (Merthiolate): a POISONOUS AND HAZARDOUS SUBSTANCE which should be handled by trained staff only.
Storage:	-20 °C
Storage Comment:	Keep as concentrated solution. Aliquot and store at -20°C or below. Avoid multiple freeze-thaw

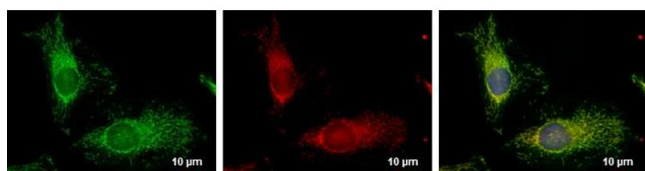
cycles.

Publications

Product cited in: Tang, Lee, Kim, Bishop, Rodgers: "siRNA-knockdown of ADAMTS-13 modulates endothelial cell angiogenesis." in: **Microvascular research**, Vol. 113, pp. 65-70, (2018) ([PubMed](#)).

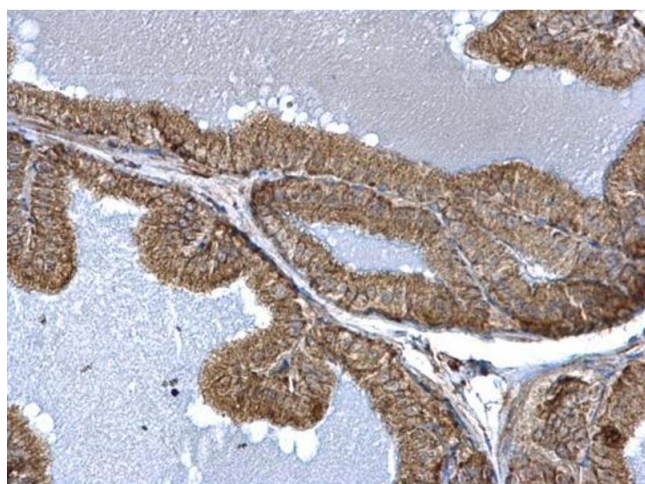
There are more publications referencing this product on: [Product page](#)

Validation report #100014 for Immunofluorescence (IF)



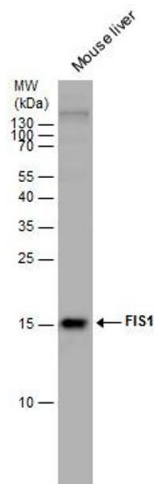
Immunofluorescence

Image 1. ICC/IF Image FIS1 antibody detects FIS1 protein at mitochondria by immunofluorescent analysis. Sample: HeLa cells were fixed in 2% paraformaldehyde/culture medium at 37°C for 30 min. Green: FIS1 protein stained by FIS1 antibody, diluted at 1:2000. Red: MitoTrackerR Red CMXRos, a mitochondria tracker. Blue: Hoechst 33342 staining. Scale bar = 10 μm.



Immunohistochemistry

Image 2. IHC-P Image TTC11 antibody detects TTC11 protein at mitochondria on mouse prostate by immunohistochemical analysis. Sample: Paraffin-embedded mouse prostate. TTC11 antibody, dilution: 1:500.



Western Blotting

Image 3. WB Image FIS1 antibody detects FIS1 protein by western blot analysis. Mouse tissue extracts (50 µg) was separated by 15 % SDS-PAGE, and the membrane was blotted with FIS1 antibody , diluted by 1:5000.

Please check the [product details page](#) for more images. Overall 8 images are available for ABIN2856782.