

Datasheet for ABIN2856784

anti-Pyrophosphatase (Inorganic) 1 (PPA1) antibody

5 Images

[Go to Product page](#)

Overview

Quantity:	100 µL
Target:	Pyrophosphatase (Inorganic) 1 (PPA1)
Reactivity:	Human
Host:	Rabbit
Clonality:	Polyclonal
Conjugate:	Un-conjugated
Application:	Western Blotting (WB), Immunofluorescence (IF), Immunocytochemistry (ICC), Immunohistochemistry (Paraffin-embedded Sections) (IHC (p))

Product Details

Immunogen:	Recombinant protein encompassing a sequence within the center region of human PPA1. The exact sequence is proprietary.
Isotype:	IgG
Cross-Reactivity:	Human, Mouse, Rat
Characteristics:	Rabbit Polyclonal antibody to PPA1 (pyrophosphatase (inorganic) 1) PPA1 antibody
Purification:	Purified by antigen-affinity chromatography.

Target Details

Target:	Pyrophosphatase (Inorganic) 1 (PPA1)
Alternative Name:	pyrophosphatase (inorganic) 1 (PPA1 Products)

Target Details

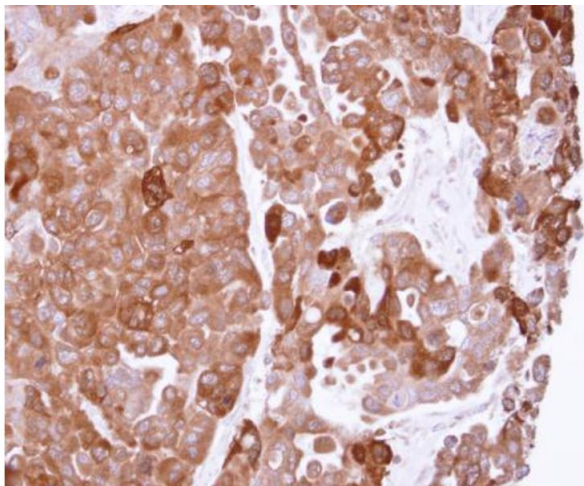
Target Type:	Viral Protein
Background:	<p>The protein encoded by this gene is a member of the inorganic pyrophosphatase (PPase) family. PPases catalyze the hydrolysis of pyrophosphate to inorganic phosphate, which is important for the phosphate metabolism of cells. Studies of a similar protein in bovine suggested a cytoplasmic localization of this enzyme.</p> <p>Cellular Localization: Cytoplasm</p>
Molecular Weight:	33 kDa
Gene ID:	5464
UniProt:	Q15181

Application Details

Application Notes:	WB: 1:5000-1:20000. ICC/IF: 1:100-1:1000. IHC-P: 1:100-1:1000. Optimal dilutions/concentrations should be determined by the researcher. Not tested in other applications.
Comment:	Positive Control: Neuro2A , GL261 , C8D30 , NIH-3T3 , BCL-1 , Raw264.7 , C2C12 , PC-12 , Rat2
Restrictions:	For Research Use only

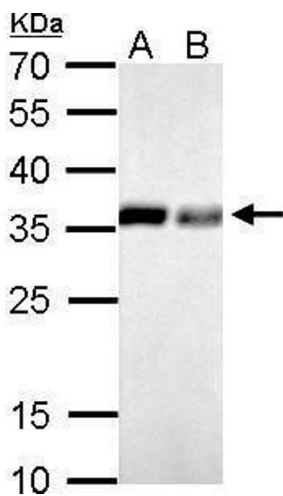
Handling

Format:	Liquid
Concentration:	0.93 mg/mL
Buffer:	0.1M Tris-Glycine (pH 7), 10 % Glycerol, 0.01 % Thimerosal
Preservative:	Thimerosal (Merthiolate)
Precaution of Use:	This product contains Thimerosal (Merthiolate): a POISONOUS AND HAZARDOUS SUBSTANCE which should be handled by trained staff only.
Storage:	4 °C,-20 °C
Storage Comment:	Store as concentrated solution. Centrifuge briefly prior to opening vial. For short-term storage (1-2 weeks), store at 4°C. For long-term storage, aliquot and store at -20°C or below. Avoid multiple freeze-thaw cycles.



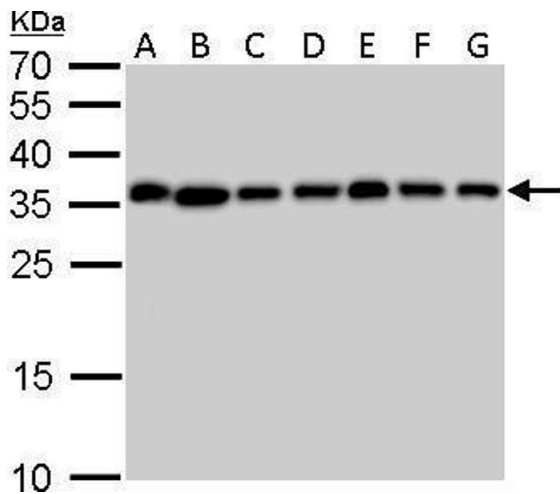
Immunohistochemistry

Image 1. IHC-P Image Immunohistochemical analysis of paraffin-embedded OVCAR3 xenograft, using PPA1, antibody at 1:500 dilution.



Western Blotting

Image 2. WB Image PPA1 antibody detects PPA1 protein by Western blot analysis. A. 30 µg PC-12 whole cell lysate/extract B. 30 µg Rat2 whole cell lysate/extract 12 % SDS-PAGE PPA1 antibody , dilution: 1:1000



Western Blotting

Image 3. WB Image PPA1 antibody detects PPA1 protein by Western blot analysis. A. 30 µg Neuro2A whole cell lysate/extract B. 30 µg GL261 whole cell lysate/extract C. 30 µg C8D30 whole cell lysate/extract D. 30 µg NIH-3T3 whole cell lysate/extract E. 30 µg BCL-1 whole cell lysate/extract F. 30 µg Raw264.7 whole cell lysate/extract G. 30 µg C2C12 whole cell lysate/extract 12 % SDS-PAGE PPA1 antibody , dilution: 1:1000

Please check the [product details page](#) for more images. Overall 5 images are available for ABIN2856784.