

Datasheet for ABIN2856785
anti-MAPKSP1 antibody[Go to Product page](#)

4 Images

Overview

Quantity:	100 µL
Target:	MAPKSP1
Reactivity:	Human
Host:	Rabbit
Clonality:	Polyclonal
Conjugate:	This MAPKSP1 antibody is un-conjugated
Application:	Western Blotting (WB), Immunohistochemistry (Paraffin-embedded Sections) (IHC (p))

Product Details

Immunogen:	Full length human MP1 Recombinant protein.
Isotype:	IgG
Cross-Reactivity:	Human, Mouse, Rat
Characteristics:	Rabbit Polyclonal antibody to MP1 (MAPK scaffold protein 1) MP1 antibody [N1C3]
Purification:	Purified by antigen-affinity chromatography.

Target Details

Target:	MAPKSP1
Alternative Name:	late endosomal/lysosomal adaptor, MAPK and MTOR activator 3 (MAPKSP1 Products)
Background:	This gene encodes a scaffold protein that functions in the extracellular signal-regulated kinase

Target Details

(ERK) cascade. The protein is localized to late endosomes by the mitogen-activated protein-binding protein-interacting protein, and binds specifically to MAP kinase kinase MAP2K1/MEK1, MAP kinase MAPK3/ERK1, and MAP kinase MAPK1/ERK2. Studies of the orthologous gene in mouse indicate that it regulates late endosomal traffic and cell proliferation. Multiple transcript variants are expressed by this gene, but only one variant is thought to express a protein.

Molecular Weight: 14 kDa

Gene ID: 8649

UniProt: [Q9UHA4](#)

Pathways: [PI3K-Akt Signaling](#)

Application Details

Application Notes: WB: 1:500-1:3000. IHC-P: 1:100-1:1000. Optimal dilutions/concentrations should be determined by the researcher. Not tested in other applications.

Comment: Positive Control: 293T , Rat2 , Neuro2A , Raw264.7 , C2C12

Restrictions: For Research Use only

Handling

Format: Liquid

Concentration: 0.88 mg/mL

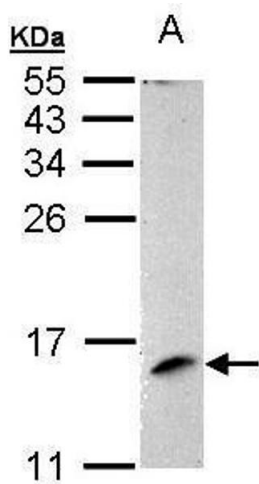
Buffer: 0.1M Tris-Glycine (pH 7), 10 % Glycerol, 0.01 % Thimerosal

Preservative: Thimerosal (Merthiolate)

Precaution of Use: This product contains Thimerosal (Merthiolate): a POISONOUS AND HAZARDOUS SUBSTANCE which should be handled by trained staff only.

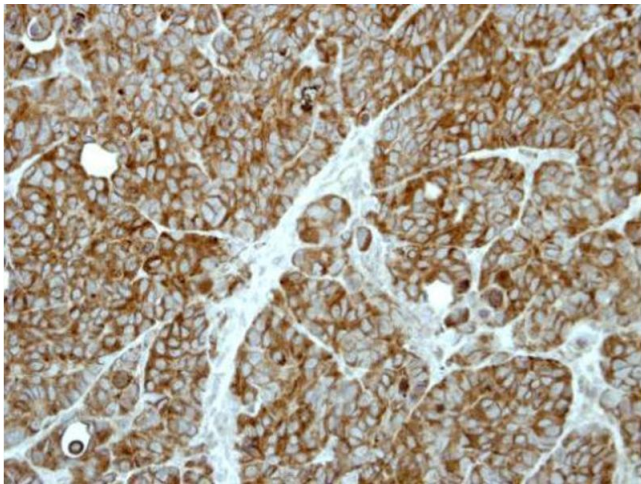
Storage: 4 °C, -20 °C

Storage Comment: Store as concentrated solution. Centrifuge briefly prior to opening vial. For short-term storage (1-2 weeks), store at 4°C. For long-term storage, aliquot and store at -20°C or below. Avoid multiple freeze-thaw cycles.



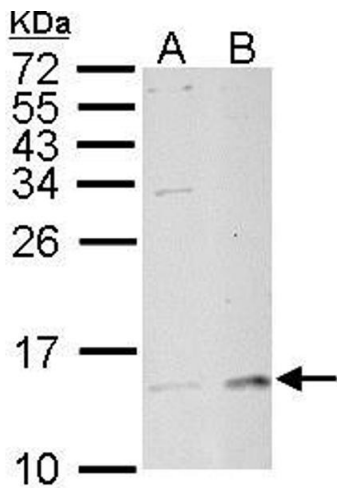
Western Blotting

Image 1. WB Image Sample (30 ug of whole cell lysate) A: 293T 15% SDS PAGE antibody diluted at 1:1000



Immunohistochemistry

Image 2. IHC-P Image Immunohistochemical analysis of paraffin-embedded SW480 xenograft, using MP1, antibody at 1:500 dilution.



Western Blotting

Image 3. WB Image MP1 antibody detects MP1 protein by Western blot analysis. A. 30 µg Rat2 whole cell lysate/extract 15 % SDS-PAGE MP1 antibody , dilution: 1:1000

Please check the [product details page](#) for more images. Overall 4 images are available for ABIN2856785.