

Datasheet for ABIN2856788
anti-PPP3CB antibody (Center)

3 Images

[Go to Product page](#)

Overview

Quantity:	100 µL
Target:	PPP3CB
Binding Specificity:	Center
Reactivity:	Human, Mouse
Host:	Rabbit
Clonality:	Polyclonal
Conjugate:	This PPP3CB antibody is un-conjugated
Application:	Western Blotting (WB), Immunohistochemistry (Paraffin-embedded Sections) (IHC (p))

Product Details

Immunogen:	Recombinant protein encompassing a sequence within the center region of human PPP3CB. The exact sequence is proprietary.
Isotype:	IgG
Cross-Reactivity:	Chicken, Rabbit, Rat (Rattus), Xenopus laevis, Cow (Bovine), Xenopus tropicalis
Cross-Reactivity (Details):	Chicken (96 %), Rabbit (99 %), Rat (99 %), Xenopus laevis (83 %), Bovine (99 %), Xenopus tropicalis (83 %)
Characteristics:	Rabbit Polyclonal antibody to PPP3CB (protein phosphatase 3, catalytic subunit, beta isozyme) PPP3CB antibody [N1N3]
Purification:	Purified by antigen-affinity chromatography.

Target Details

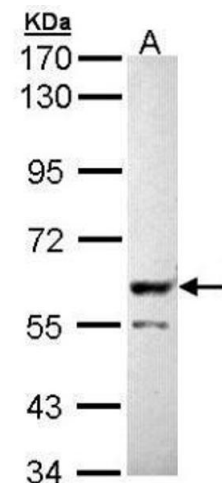
Target:	PPP3CB
Alternative Name:	PPP3CB (PPP3CB Products)
Background:	Calcium-dependent, calmodulin-stimulated protein phosphatase. This subunit may have a role in the calmodulin activation of calcineurin.
Molecular Weight:	59 kDa
Gene ID:	5532
Pathways:	RTK Signaling , WNT Signaling , Fc-epsilon Receptor Signaling Pathway , Positive Regulation of Peptide Hormone Secretion , Regulation of Leukocyte Mediated Immunity , VEGF Signaling , BCR Signaling

Application Details

Application Notes:	Suggested dilution Reference IHC (Formalin-fixed paraffin-embedded sections) 1:100-1:1000* Western blot 1:1000-1:10000* Not tested in other applications. *Optimal dilutions/concentrations should be determined by the researcher.Suggested dilutionReferenceIHC (Formalin-fixed paraffin-embedded sections)1:100-1:1000* Western blot1:1000-1:10000*
Comment:	Positive Control: Molt-4 , mouse brain
Restrictions:	For Research Use only

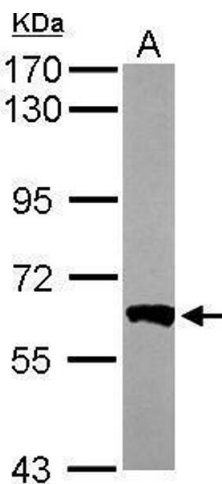
Handling

Format:	Liquid
Concentration:	1 mg/mL
Buffer:	0.1M Tris, 0.1M Glycine, 10 % Glycerol (pH 7). 0.01 % Thimerosal was added as a preservative.
Preservative:	Thimerosal (Merthiolate)
Precaution of Use:	This product contains Thimerosal (Merthiolate): a POISONOUS AND HAZARDOUS SUBSTANCE which should be handled by trained staff only.
Storage:	-20 °C
Storage Comment:	Keep as concentrated solution. Aliquot and store at -20°C or below. Avoid multiple freeze-thaw cycles.



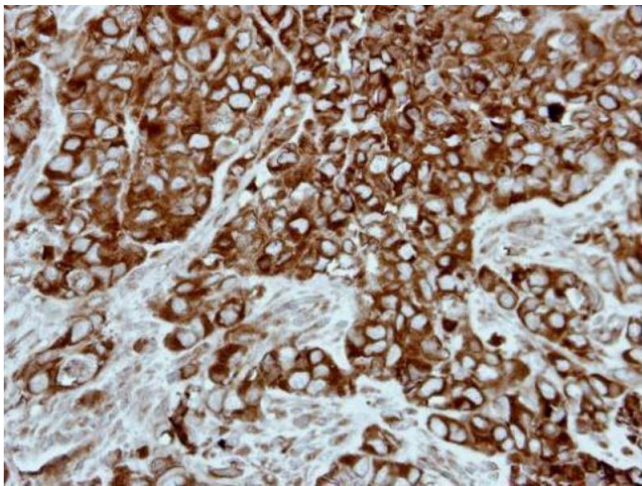
Western Blotting

Image 1. WB Image Sample (30 ug of whole cell lysate) A:
Molt-4 , 7.5% SDS PAGE antibody diluted at 1:5000



Western Blotting

Image 2. WB Image Sample (50 ug of whole cell lysate) A:
Mouse brain 7.5% SDS PAGE antibody diluted at 1:1000



Immunohistochemistry

Image 3. IHC-P Image Immunohistochemical analysis of
paraffin-embedded H661 xenograft, using PPP3CB,
antibody at 1:500 dilution.