



Datasheet for ABIN2856795  
**anti-WNT10A antibody (Center)**



[Go to Product page](#)

2 Images

Overview

Quantity:	100 µL
Target:	WNT10A
Binding Specificity:	Center
Reactivity:	Human
Host:	Rabbit
Clonality:	Polyclonal
Conjugate:	This WNT10A antibody is un-conjugated
Application:	Western Blotting (WB), Immunocytochemistry (ICC), Immunofluorescence (IF)

Product Details

Immunogen:	Recombinant protein encompassing a sequence within the center region of human WNT10A. The exact sequence is proprietary.
Isotype:	IgG
Cross-Reactivity:	Mouse (Murine), Rat (Rattus), Cow (Bovine)
Cross-Reactivity (Details):	Mouse (96 %), Rat (97 %), Bovine (96 %)
Characteristics:	Rabbit polyclonal antibody to WNT10A (wingless-type MMTV integration site family, member 10A) WNT10A antibody [N1C1-2]
Purification:	Purified by antigen-affinity chromatography.

## Target Details

---

Target:	WNT10A
Alternative Name:	WNT10A ( <a href="#">WNT10A Products</a> )
Background:	<p>The WNT gene family consists of structurally related genes which encode secreted signaling proteins. These proteins have been implicated in oncogenesis and in several developmental processes, including regulation of cell fate and patterning during embryogenesis. This gene is a member of the WNT gene family. It is strongly expressed in the cell lines of promyelocytic leukemia and Burkitt's lymphoma. In addition, it and another family member, the WNT6 gene, are strongly coexpressed in colorectal cancer cell lines. The gene overexpression may play key roles in carcinogenesis through activation of the WNT-beta-catenin-TCF signaling pathway. This gene and the WNT6 gene are clustered in the chromosome 2q35 region.</p> <p>Cellular Localization: Secreted , extracellular space , extracellular matrix</p>
Molecular Weight:	46 kDa
Gene ID:	80326
Pathways:	<a href="#">WNT Signaling</a>

## Application Details

---

Application Notes:	Suggested dilution Reference ICC/IF 1:100-1:1000* Western blot 1:500-1:3000* Not tested in other applications. *Optimal dilutions/concentrations should be determined by the researcher.Suggested dilutionReferenceICC/IF1:100-1:1000* Western blot1:500-1:3000*
Comment:	Positive Control: Molt-4 , Raji
Restrictions:	For Research Use only

## Handling

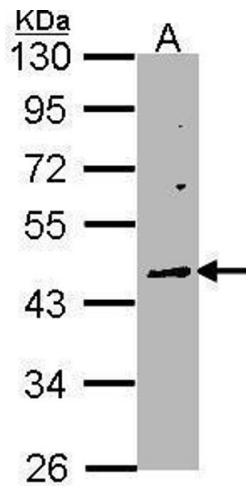
---

Format:	Liquid
Concentration:	1 mg/mL
Buffer:	0.1M Tris, 0.1M Glycine, 10 % Glycerol ( pH 7). 0.01 % Thimerosal was added as a preservative.
Preservative:	Thimerosal (Merthiolate)
Precaution of Use:	This product contains Thimerosal (Merthiolate): a POISONOUS AND HAZARDOUS SUBSTANCE which should be handled by trained staff only.
Storage:	-20 °C

## Handling

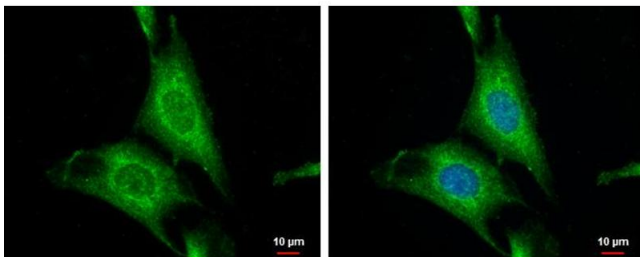
Storage Comment: Keep as concentrated solution. Aliquot and store at -20°C or below. Avoid multiple freeze-thaw cycles.

## Images



### Western Blotting

**Image 1.** WB Image Sample (30 ug of whole cell lysate) A:  
Raji 10% SDS PAGE antibody diluted at 1:1000



### Immunofluorescence

**Image 2.** ICC/IF Image WNT10A antibody [N1C1-2] detects WNT10A protein at cytoplasm by immunofluorescent analysis. Sample: SKNSH cells were fixed in 4% paraformaldehyde at RT for 15 min. Green: WNT10A protein stained by WNT10A antibody [N1C1-2], diluted at 1:500. Blue: Hoechst 33342 staining.