

Datasheet for ABIN2856800
anti-SHC4 antibody (Center)[Go to Product page](#)

1 Image

Overview

Quantity:	100 µL
Target:	SHC4
Binding Specificity:	Center
Reactivity:	Human
Host:	Rabbit
Clonality:	Polyclonal
Application:	Western Blotting (WB)

Product Details

Immunogen:	Recombinant protein encompassing a sequence within the center region of human SHC4. The exact sequence is proprietary.
Isotype:	IgG
Cross-Reactivity:	Cow (Bovine)
Cross-Reactivity (Details):	Bovine (87 %)
Characteristics:	Rabbit polyclonal antibody to SHC4 (SHC (Src homology 2 domain containing) family, member 4) SHC4 antibody [C1C3]
Purification:	Purified by antigen-affinity chromatography.

Target Details

Target:	SHC4
---------	------

Target Details

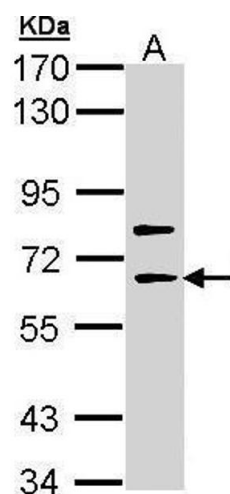
Alternative Name:	SHC4 (SHC4 Products)
Background:	Activates both Ras-dependent and Ras-independent migratory pathways in melanomas. Contributes to the early phases of agrin-induced tyrosine phosphorylation of CHRNA1. Cellular Localization: Cell junction , synapse , postsynaptic cell membrane
Molecular Weight:	69 kDa
Gene ID:	399694

Application Details

Application Notes:	Suggested dilution Reference Western blot 1:500-1:3000* Not tested in other applications. *Optimal dilutions/concentrations should be determined by the researcher.Suggested dilutionReferenceWestern blot1:500-1:3000*
Comment:	Positive Control: A431 , Molt-4
Restrictions:	For Research Use only

Handling

Format:	Liquid
Concentration:	0.54 mg/mL
Buffer:	0.1M Tris, 0.1M Glycine, 10 % Glycerol (pH 7). 0.01 % Thimerosal was added as a preservative.
Preservative:	Thimerosal (Merthiolate)
Precaution of Use:	This product contains Thimerosal (Merthiolate): a POISONOUS AND HAZARDOUS SUBSTANCE which should be handled by trained staff only.
Storage:	-20 °C
Storage Comment:	Keep as concentrated solution. Aliquot and store at -20°C or below. Avoid multiple freeze-thaw cycles.



Western Blotting

Image 1. WB Image Sample (30 ug of whole cell lysate) A:
Molt-4 , 7.5% SDS PAGE antibody diluted at 1:1000