

Datasheet for ABIN2856803

**anti-STK40 antibody****3** Images[Go to Product page](#)

## Overview

Quantity:	100 µL
Target:	STK40
Reactivity:	Human
Host:	Rabbit
Clonality:	Polyclonal
Conjugate:	This STK40 antibody is un-conjugated
Application:	Western Blotting (WB), Immunocytochemistry (ICC), Immunofluorescence (IF)

## Product Details

Immunogen:	Recombinant protein encompassing a sequence within the center region of human STK40. The exact sequence is proprietary.
Isotype:	IgG
Cross-Reactivity:	Human
Characteristics:	Rabbit polyclonal antibody to serine/threonine kinase 40 (serine/threonine kinase 40) serine/threonine kinase 40 antibody [N3C3]
Purification:	Purified by antigen-affinity chromatography.

## Target Details

Target:	STK40
Alternative Name:	serine/threonine kinase 40 ( <a href="#">STK40 Products</a> )

## Target Details

Background: May be a negative regulator of NF-kappa-B and p53-mediated gene transcription.

Cellular Localization: Nucleus , Cytoplasm

Molecular Weight: 49 kDa

Gene ID: 83931

UniProt: [Q8N2I9](#)

## Application Details

Application Notes: WB: 1:500-1:10000. ICC/IF: 1:100-1:1000. Optimal dilutions/concentrations should be determined by the researcher. Not tested in other applications.

Comment: Positive Control: HeLa , HepG2 , Myc-DDK-tagged serine/threonine kinase 40-transfected 293T cells

Validation: Overexpression

Restrictions: For Research Use only

## Handling

Format: Liquid

Concentration: 0.97 mg/mL

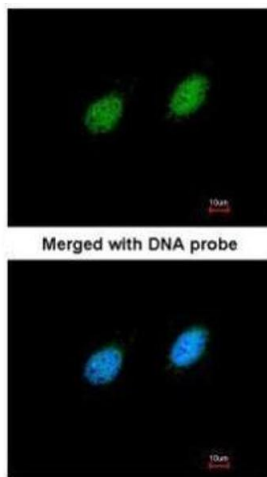
Buffer: 0.1M Tris-Glycine ( pH 7), 10 % Glycerol, 0.01 % Thimerosal

Preservative: Thimerosal (Merthiolate)

Precaution of Use: This product contains Thimerosal (Merthiolate): a POISONOUS AND HAZARDOUS SUBSTANCE which should be handled by trained staff only.

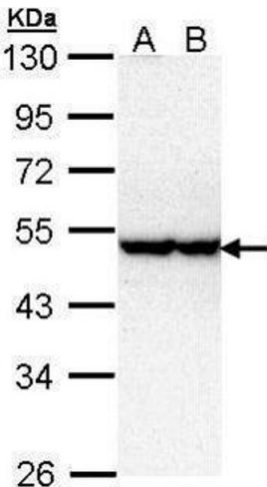
Storage: 4 °C,-20 °C

Storage Comment: Store as concentrated solution. Centrifuge briefly prior to opening vial. For short-term storage (1-2 weeks), store at 4°C. For long-term storage, aliquot and store at -20°C or below. Avoid multiple freeze-thaw cycles.



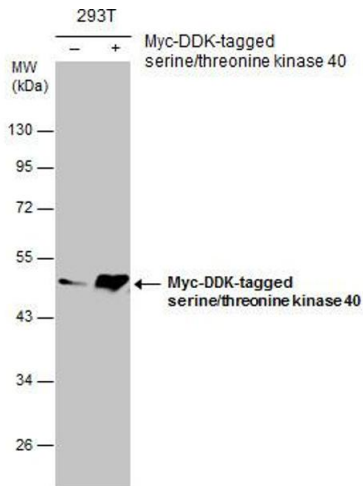
Immunofluorescence

**Image 1.** ICC/IF Image Immunofluorescence analysis of paraformaldehyde-fixed HeLa, using serine/threonine kinase 40, antibody at 1:200 dilution.



Western Blotting

**Image 2.** WB Image Sample (30 ug of whole cell lysate) A: HeLa B: Hep G2 , 10% SDS PAGE antibody diluted at 1:1000



Western Blotting

**Image 3.** WB Image Non-transfected (–) and transfected (+) 293T whole cell extracts (30 µg) were separated by 10% SDS-PAGE, and the membrane was blotted with serine/threonine kinase 40 antibody [N3C3] , diluted at 1:5000.