



[Go to Product page](#)

Datasheet for ABIN2856804  
**anti-MPP1 antibody (Center)**

2 Images

Overview

Quantity:	100 µL
Target:	MPP1
Binding Specificity:	Center
Reactivity:	Human
Host:	Rabbit
Clonality:	Polyclonal
Conjugate:	This MPP1 antibody is un-conjugated
Application:	Western Blotting (WB), Immunohistochemistry (Paraffin-embedded Sections) (IHC (p))

Product Details

Immunogen:	Recombinant protein encompassing a sequence within the center region of human MPP1. The exact sequence is proprietary.
Isotype:	IgG
Cross-Reactivity:	Mouse (Murine), Chicken, Rabbit, Cow (Bovine)
Cross-Reactivity (Details):	Mouse (94 %), Chicken (88 %), Rabbit (98 %), Bovine (94 %)
Characteristics:	Rabbit polyclonal antibody to MPP1 (membrane protein, palmitoylated 1, 55 kDa) MPP1 antibody [N3C3]
Purification:	Purified by antigen-affinity chromatography.

## Target Details

---

Target:	MPP1
Alternative Name:	MPP1 ( <a href="#">MPP1 Products</a> )
Background:	<p>Palmitoylated membrane protein 1 is the prototype of a family of membrane-associated proteins termed MAGUKs (membrane-associated guanylate kinase homologs). MAGUKs interact with the cytoskeleton and regulate cell proliferation, signaling pathways, and intracellular junctions. Palmitoylated membrane protein 1 contains a conserved sequence, called the SH3 (src homology 3) motif, found in several other proteins that associate with the cytoskeleton and are suspected to play important roles in signal transduction.</p> <p>Cellular Localization: Membrane, Peripheral membrane protein , Cell projection , stereocilium (By similarity)</p>
Molecular Weight:	52 kDa
Gene ID:	4354

## Application Details

---

Application Notes:	<p>Suggested dilution Reference IHC (Formalin-fixed paraffin-embedded sections) 1:100-1:1000* Western blot 1:500-1:3000* Not tested in other applications. *Optimal dilutions/concentrations should be determined by the researcher. Suggested dilution Reference IHC (Formalin-fixed paraffin-embedded sections) 1:100-1:1000* Western blot 1:500-1:3000*</p>
Comment:	Positive Control: 293T , A431 , H1299 , HeLa , HepG2 , Molt-4 , Raji
Restrictions:	For Research Use only

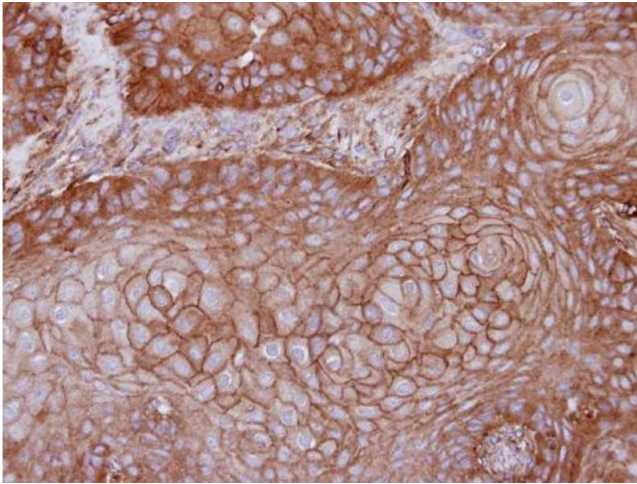
## Handling

---

Format:	Liquid
Concentration:	0.87 mg/mL
Buffer:	0.1M Tris, 0.1M Glycine, 10 % Glycerol ( pH 7). 0.01 % Thimerosal was added as a preservative.
Preservative:	Thimerosal (Merthiolate)
Precaution of Use:	This product contains Thimerosal (Merthiolate): a POISONOUS AND HAZARDOUS SUBSTANCE which should be handled by trained staff only.
Storage:	-20 °C
Storage Comment:	Keep as concentrated solution. Aliquot and store at -20°C or below. Avoid multiple freeze-thaw

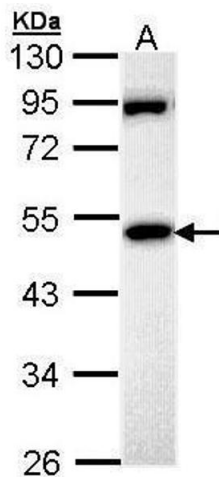
cycles.

Images



**Immunohistochemistry**

**Image 1.** IHC-P Image Immunohistochemical analysis of paraffin-embedded Cal27 xenograft, using MPP1, antibody at 1:100 dilution.



**Western Blotting**

**Image 2.** WB Image Sample (30 ug of whole cell lysate) A: HeLa 10% SDS PAGE antibody diluted at 1:1000