



[Go to Product page](#)

Datasheet for ABIN2856812
anti-EEF2K antibody (N-Term)

4 Images

Overview

Quantity:	100 µL
Target:	EEF2K
Binding Specificity:	N-Term
Reactivity:	Human
Host:	Rabbit
Clonality:	Polyclonal
Conjugate:	This EEF2K antibody is un-conjugated
Application:	Western Blotting (WB), Immunohistochemistry (Paraffin-embedded Sections) (IHC (p)), Immunofluorescence (IF), Immunocytochemistry (ICC)

Product Details

Immunogen:	Recombinant protein encompassing a sequence within the N-terminus region of human eEF2K. The exact sequence is proprietary.
Isotype:	IgG
Cross-Reactivity:	Human, Mouse, Rat
Characteristics:	Rabbit Polyclonal antibody to EEF2K (eukaryotic elongation factor-2 kinase) eEF-2K antibody [N1N3]
Purification:	Purified by antigen-affinity chromatography.

Target Details

Target:	EEF2K
---------	-------

Target Details

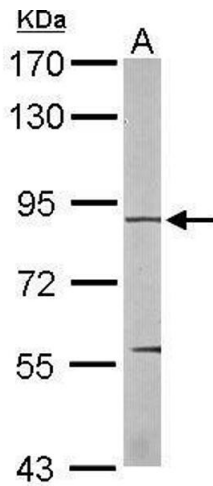
Alternative Name:	eukaryotic elongation factor 2 kinase (EEF2K Products)
Background:	This gene encodes a highly conserved protein kinase in the calmodulin-mediated signaling pathway that links activation of cell surface receptors to cell division. This kinase is involved in the regulation of protein synthesis. It phosphorylates eukaryotic elongation factor 2 (EEF2) and thus inhibits the EEF2 function. The activity of this kinase is increased in many cancers and may be a valid target for anti-cancer treatment.
Molecular Weight:	82 kDa
Gene ID:	29904
UniProt:	O00418
Pathways:	AMPK Signaling

Application Details

Application Notes:	WB: 1:500-1:10000. ICC/IF: 1:100-1:1000. IHC-P: 1:100-1:1000. Optimal dilutions/concentrations should be determined by the researcher. Not tested in other applications.
Comment:	Positive Control: Mouse liver , A431 , H1299 , HeLa , HepG2 , PC-12
Restrictions:	For Research Use only

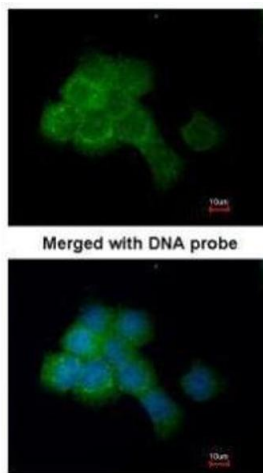
Handling

Format:	Liquid
Concentration:	1 mg/mL
Buffer:	0.1M Tris-Glycine (pH 7), 10 % Glycerol, 0.01 % Thimerosal
Preservative:	Thimerosal (Merthiolate)
Precaution of Use:	This product contains Thimerosal (Merthiolate): a POISONOUS AND HAZARDOUS SUBSTANCE which should be handled by trained staff only.
Storage:	4 °C,-20 °C
Storage Comment:	Store as concentrated solution. Centrifuge briefly prior to opening vial. For short-term storage (1-2 weeks), store at 4°C. For long-term storage, aliquot and store at -20°C or below. Avoid multiple freeze-thaw cycles.



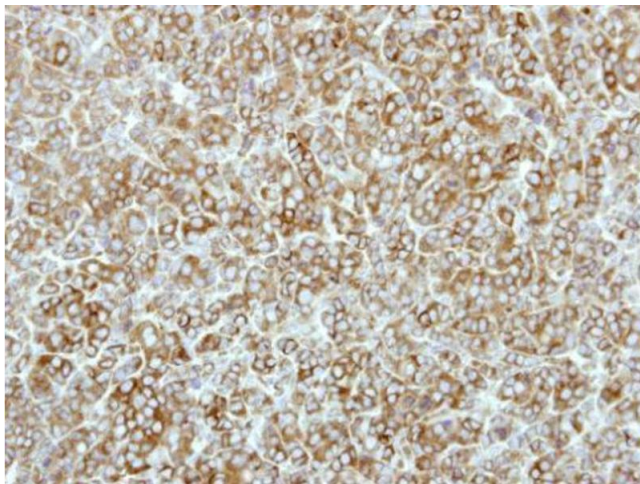
Western Blotting

Image 1. WB Image Sample (50 ug of whole cell lysate) A: mouse liver 7.5% SDS PAGE antibody diluted at 1:1000



Immunofluorescence

Image 2. ICC/IF Image Immunofluorescence analysis of paraformaldehyde-fixed A431, using eEF-2K, antibody at 1:200 dilution.



Immunohistochemistry

Image 3. IHC-P Image Immunohistochemical analysis of paraffin-embedded BT483 xenograft, using eEF-2K, antibody at 1:500 dilution.

Please check the [product details page](#) for more images. Overall 4 images are available for ABIN2856812.