

Datasheet for ABIN2856814
anti-OXSR1 antibody (Center)[Go to Product page](#)

2 Images

Overview

Quantity:	100 µL
Target:	OXSR1
Binding Specificity:	Center
Reactivity:	Human
Host:	Rabbit
Clonality:	Polyclonal
Conjugate:	This OXSR1 antibody is un-conjugated
Application:	Western Blotting (WB), Immunofluorescence (IF), Immunocytochemistry (ICC)

Product Details

Immunogen:	Recombinant protein encompassing a sequence within the center region of human OXSR1. The exact sequence is proprietary.
Isotype:	IgG
Cross-Reactivity:	Pig (Porcine), Rhesus Monkey
Cross-Reactivity (Details):	Pig (100 %), Rhesus Monkey (100 %)
Characteristics:	Rabbit polyclonal antibody to OXSR1 (oxidative-stress responsive 1) OXSR1 antibody [N1C1]
Purification:	Purified by antigen-affinity chromatography.

Target Details

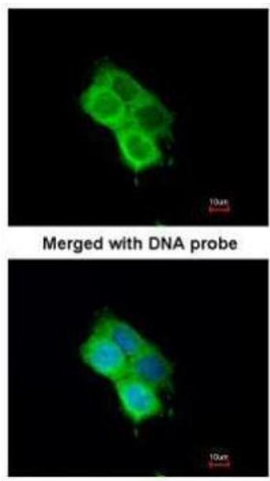
Target:	OXR1
Alternative Name:	OXR1 (OXR1 Products)
Background:	The product of this gene belongs to the Ser/Thr protein kinase family of proteins. It regulates downstream kinases in response to environmental stress, and may play a role in regulating the actin cytoskeleton.
Molecular Weight:	58 kDa
Gene ID:	9943
Pathways:	Tube Formation

Application Details

Application Notes:	Suggested dilution Reference ICC/IF 1:100-1:1000* Western blot 1:5000-1:20000* Not tested in other applications. *Optimal dilutions/concentrations should be determined by the researcher.Suggested dilutionReferenceICC/IF1:100-1:1000* Western blot1:5000-1:20000*
Comment:	Positive Control: 293T , A431 , H1299 , HeLa , HepG2 , Molt-4 , Raji
Restrictions:	For Research Use only

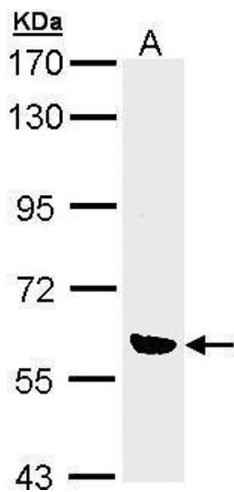
Handling

Format:	Liquid
Concentration:	0.58 mg/mL
Buffer:	0.1M Tris, 0.1M Glycine, 10 % Glycerol (pH 7). 0.01 % Thimerosal was added as a preservative.
Preservative:	Thimerosal (Merthiolate)
Precaution of Use:	This product contains Thimerosal (Merthiolate): a POISONOUS AND HAZARDOUS SUBSTANCE which should be handled by trained staff only.
Storage:	-20 °C
Storage Comment:	Keep as concentrated solution. Aliquot and store at -20°C or below. Avoid multiple freeze-thaw cycles.



Immunofluorescence

Image 1. ICC/IF Image Immunofluorescence analysis of paraformaldehyde-fixed A431, using OXSR1(OSR1), antibody at 1:200 dilution.



Western Blotting

Image 2. WB Image Sample (30 ug of whole cell lysate) A: 293T 7.5% SDS PAGE antibody diluted at 1:10000